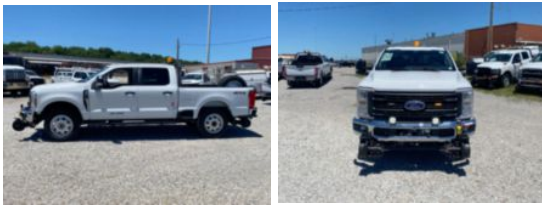


**2024 Ford F250 4x4 Hi-Rail Pickup Truck**

**\$ 105,960**

Stock RED53667 VIN 1FT7W2BA1RED53667



Hi-Rail Specifications		Unit Specifications	
Year	2024	Attachment Year	2023
Make	Ford		
Model	F250		
Cab Type	CREW CAB		
CA or CT	84		
Chassis Class	CLASS 2 CHASSIS		
Engine Make	Ford		
Engine Model	6.8L G		
Engine HP	405		
Transmission	Automatic		
Transmission Speed	10		
FA Capacity	6,000		
RA Capacity	6,200		
Wheelbase	160		
Brakes	HYDRAULIC		
Rear Suspension	SPRING		
Engine Size	6.8		
Engine Fuel Type	Gas		
Axle Config	4x4		
GVWR	10,000		
Frame	SINGLE		