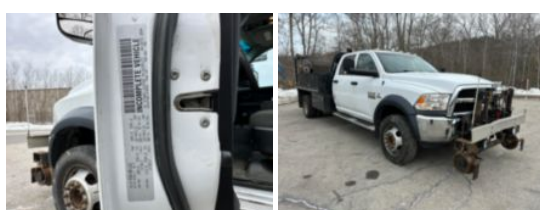


**2018 Dodge 5500 Diesel 4x4 Crew Cab "Rail Gear Equipped"**
**\$ 37,950**

Stock JG157468 VIN 3C7WRNFL1JG157468


**Hi-Rail Specifications**
**Unit Specifications**

<b>Year</b>	2018
<b>Make</b>	DODGE
<b>Model</b>	5500
<b>Cab Type</b>	CREW CAB
<b>CA or CT</b>	84
<b>Chassis Class</b>	Truck
<b>Engine Make</b>	Cummins
<b>Engine Model</b>	ISB 6.7
<b>Engine HP</b>	325
<b>Transmission Make</b>	Aisin
<b>Transmission</b>	Auto
<b>Transmission Speed</b>	6
<b>FA Capacity</b>	7,250
<b>RA Capacity</b>	13,500
<b>Rear Axle Ratio</b>	4.88
<b>Wheelbase</b>	197
<b>Current Meter Reading</b>	125,771
<b>Brakes</b>	HYDRAULIC
<b>Fuel Tank Capacity</b>	52
<b>Rear Suspension</b>	Spring
<b>Engine Size</b>	6.7
<b>Engine Fuel Type</b>	Diesel
<b>Axle Config</b>	4x4
<b>GVWR</b>	19,500
<b>Frame</b>	Steel
<b>PTO Options</b>	PROVISION