

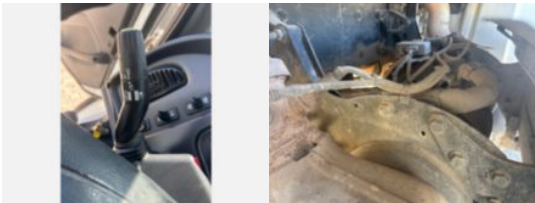
2019 Freightliner M2 Diesel 4x4 Terex Commander 4047

Call for price

Stock

KHKB6253

VIN 1FVDCXFEXKHKB6253



Truck Specifications		Unit Specifications	
Year	2019	Attachment Year	2018
Make	FREIGHTLINER	Attachment Make	Terex
Model	M2106	Attachment Model	Commander 4047
Cab Type	REGULAR CAB	Bed/Body Make	DAKOTA BODIES
CA or CT	120	Bed/Body Model	Line Body
Chassis Class	Truck		
Engine Make	Cummins		
Engine Model	L9 8.9L		
Engine HP	300		
Transmission Make	Allison		
Transmission	Auto		
Transmission Speed	6		
FA Capacity	14,000		
RA Capacity	21,000		
Rear Axle Ratio	5.56		
Wheelbase	190		
Current Meter Reading	113,473		
Brakes	AIR		
Fuel Tank Capacity	50		
Rear Suspension	Spring		
Engine Size	ISL D		
Engine Fuel Type	Diesel		
Axle Config	4x4		
GVWR	33,000		
Frame	Steel		
Front Tire	315/80R22.5		
PTO Options	YES		
Running Condition	Running		