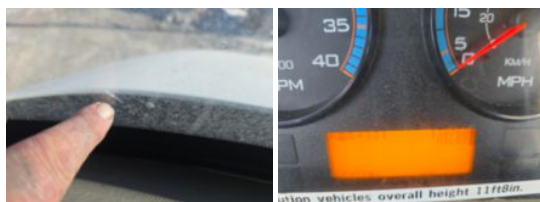
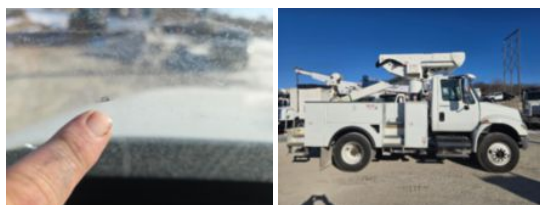


2010 Int'l 4400 Diesel 4x4 Versalift VST-40 Material
\$ 25,850

Stock AH245154 VIN 1HTMKAAN9AH245154



Truck Specifications		Unit Specifications	
Year	2010	Attachment Year	2009
Make	INTERNATIONAL	Attachment Make	Versalift
Model	4400	Attachment Model	VST-40-MHI
Chassis Class	Truck		
Engine Make	International		
Engine Model	Maxxforce dt		
Engine HP	300		
Transmission Make	Allison		
Transmission	Auto		
Transmission Speed	6		
FA Capacity	10,000		
RA Capacity	19,000		
Rear Axle Ratio	6.17		
Wheelbase	151		
Current Meter Reading	138,760		
Brakes	AIR		
Fuel Tank Capacity	100		
Rear Suspension	Spring		
Engine Size	MAXXFORCE		
Engine Fuel Type	Diesel		
Axle Config	4x2		
GVWR	29,000		
Frame	Steel		