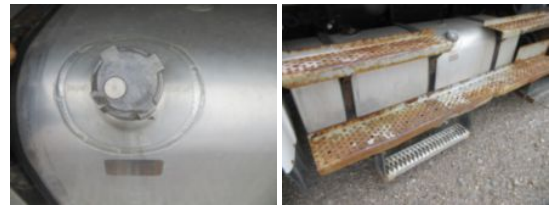


**2012 Freightliner Crew Cab M2 Diesel 4x2 IMT 10/72SL**

**\$ 48,950**

Stock CHBM4948 VIN 1FVACXBS3CHBM4948



Hi-Rail Specifications		Unit Specifications	
Year	2012	Attachment Year	2013
Make	FREIGHTLINER	Attachment Make	IMT
Model	M2106	Attachment Model	10/72SL
Color	WHITE		
Cab Type	CREW CAB		
Chassis Class	Truck		
Engine Make	Cummins		
Engine Model	ISC 8.3L		
Engine HP	300		
Transmission Make	Eaton		
Transmission	Manual		
Transmission Speed	10		
FA Capacity	12,000		
RA Capacity	21,000		
Rear Axle Ratio	3.9		
Current Meter Reading	64,072		
Block Heater	YES		
Brakes	AIR		
Fuel Tank Capacity	80		
Rear Suspension	Spring		
Engine Size	8.3		
Engine Fuel Type	Diesel		
Axle Config	4x2		
GVWR	33,000		
Driver Seat	HIGH BACK AIR RIDE		
Frame	Steel		
Front Tire	11R22.5		
Rear Tire	11R22.5		
Power Locks	YES		
PTO Options	YES		
Radio	AM/FM		
Power Windows	YES		
Passenger Seat	HIGH BACK		