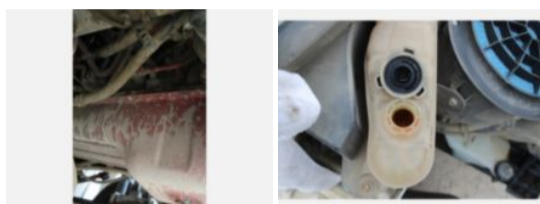
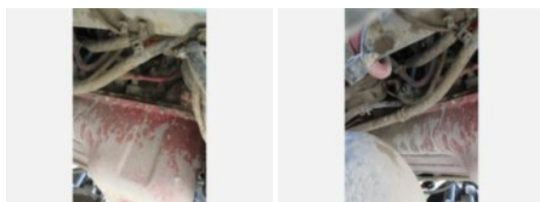


2018 Freightliner M2 Diesel 4x4 2008 Terex Commander
Call for price

Stock JDJL6250 VIN 3ALDCXFCXJDJL6250



Truck Specifications		Unit Specifications	
Year	2018	Attachment Year	2008
Make	FREIGHTLINER	Attachment Make	Terex
Model	M2106	Attachment Model	Commander 4047
Color	WHITE	Bed/Body Make	Terex
Cab Type	REGULAR CAB	Bed/Body Model	Line Body
Chassis Class	Truck		
Engine Make	Cummins		
Engine Model	B 6.7L		
Engine HP	250		
Transmission Make	Allison		
Transmission	Auto		
Transmission Speed	5		
FA Capacity	14,000		
RA Capacity	21,000		
Rear Axle Ratio	5.57		
Wheelbase	190		
Current Meter Reading	64,233		
Block Heater	YES		
Brakes	AIR		
Fuel Tank Capacity (gal)	50		
Rear Suspension	Spring		
Engine Size	6.7		
Engine Fuel Type	Diesel		
Axle Config	4x4		
GVWR (lb)	33,000		
Driver Seat	HIGH BACK AIR RIDE		
Frame	Steel		
Front Tire	12R22.5		
Rear Tire	12R22.5		
PTO Options	YES		
Radio	AM/FM		
Passenger Seat	TWO PERSON BENCH		
Running Condition	Running		