



Custom Truck One Source

Lynchburg, VA

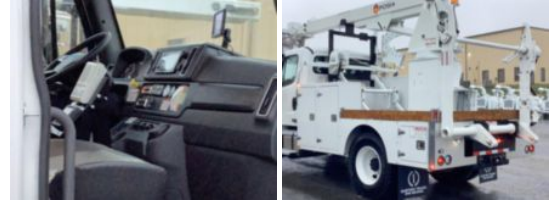
Phone: (434) 525-2929

<https://www.customtruck.com/locations>

2025 Freightliner M2106 4x2 Posi+ 800-40 Cable Placer

\$ 215,250

Stock SHVL4824 VIN 1FVACWFC6SHVL4824



Truck Specifications		Unit Specifications	
Year	2025	Attachment Year	2023
Make	Freightliner	Attachment Make	Posi+
Model	M2106	Attachment Model	800-40
Cab Type	REGULAR CAB	Bed/Body Make	Poudrier
CA or CT	87	Bed/Body Model	AUPP800FRT084CP
Chassis Class	CLASS 6 CHASSIS		
Engine Make	CUMMINS		
Engine Model	6.7L D		
Engine HP	280		
Transmission	Automatic		
Transmission Speed	6		
FA Capacity	12,000		
RA Capacity	21,000		
Brakes	AIR		
Rear Suspension	SPRING		
Engine Size	6.7		
Engine Fuel Type	Diesel		
Axle Config	4x2		
GVWR	26,000		
Frame	10188350344S		
PTO Options	YES		

DISCLAIMER: Price quoted includes any applicable FET. Quoted price is Ex Works and does not include any freight / delivery charges, sales tax, titling fees, or registration fees. Specifications are believed to be correct but may contain errors and/or omissions. Pictures are representative and may not be identical. Description and Images Custom Truck One Source