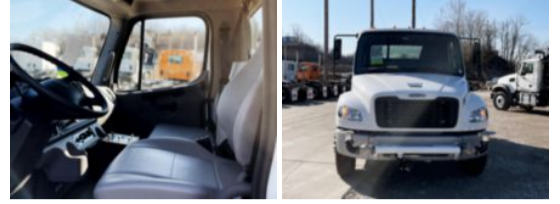


2025 Freightliner M2106 4x2 Load King 2000 Gallon Water

\$ 117,797

Stock SDVU9726 VIN 3ALACWFB8SDVU9726



Truck Specifications		Unit Specifications	
Year	2025	Attachment Year	2024
Make	Freightliner	Attachment Make	Load King
Model	M2106	Attachment Model	Load King 2000 Gallon Water Tank
Cab Type	REGULAR CAB		
CA or CT	87		
Chassis Class	CLASS 6 CHASSIS		
Engine Make	DETROIT		
Engine Model	DD5 D		
Engine HP	240		
Transmission	Automatic		
Transmission Speed	6		
FA Capacity	12,000		
RA Capacity	21,000		
Wheelbase	153		
Brakes	AIR		
Rear Suspension	SPRING		
Engine Size	DD5 D		
Engine Fuel Type	Diesel		
Axle Config	4x2		
GVWR	26,000		
Frame	10938350344S		
PTO Options	YES		