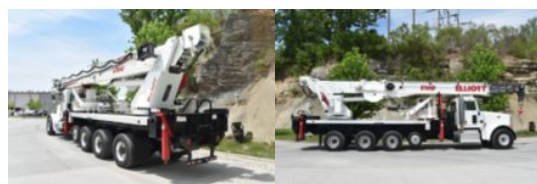
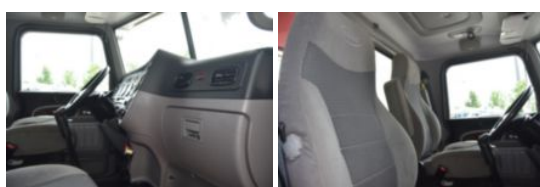


2013 Peterbilt 367 10x6 Elliott E160R E-Line Aerial Truck
\$ 325,500

Stock DD190925 VIN 1NPTX4TX1DD190925



Truck Specifications		Unit Specifications	
Year	2013	Attachment Make	Elliott
Make	Peterbilt	Attachment Model	E160R
Model	367	Maximum Work	215
Color	WHITE		
Cab Type	REGULAR CAB		
CA or CT	192		
Chassis Class	CLASS 8 CHASSIS		
Engine Make	CUMMINS		
Engine Model	ISX15		
Engine HP	450		
Transmission	Manual		
Transmission Speed	8LL		
FA Capacity	20,000		
RA Capacity	57,000		
Rear Axle Ratio	4.1		
Wheelbase	286		
Current Meter Reading	28,824		
Engine Hours	3,708		
Block Heater	YES		
Brakes	AIR		
Fuel Tank Capacity	90		
Pusher Axle(s)	(1) 8K S		
Rear Suspension	AIR TRAC		
Engine Size	14.9		
Engine Fuel Type	Diesel		
Axle Config	10x6		
GVWR	85,000		
Driver Seat	HIGH BACK AIR RIDE		
Frame	SINGLE		
Front Tire	425/65R22.5		
Rear Tire	455/55R22.5		
Power Locks	YES		
PTO Options	YES		
Radio	AM/FM/CD + BLUETOOTH		
Power Windows	DRIVER AND PASSENGER		
Passenger Seat	HIGH BACK FIXED		