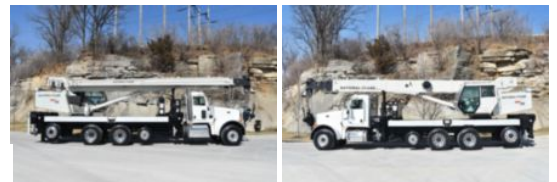
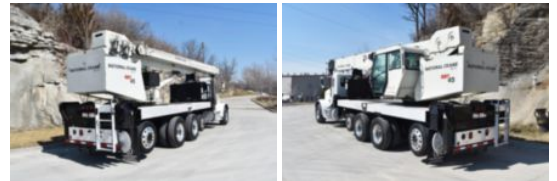


NBT45127 2014 Peterbilt 367

\$ 305,500

Stock ED243592 VIN 1NPTX4TX1ED243592



Detailed Specification

Engine Make	CUMMINS	Engine HP	485
Engine Model	ISX15	Transmission	Manual
Axle Config	10x4	Meter Reading	27740.000000
FA Capacity	20000	Characteristic Type	45 TON CRANE
RA Capacity	46000		
Rear End Ratio	4.10		
Tag Axle(s)	(1) 11\,020		
Pusher Axle(s)	(1) 8K S		
Cab Type	REGULAR CAB		
Attached Body	NBT45127		

