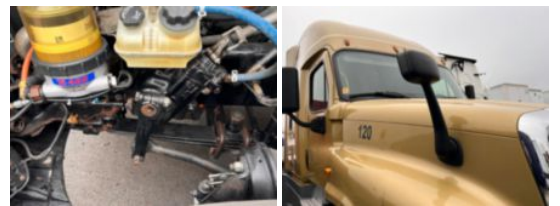


2016 Freightliner Cascadia Detroit Diesel Powered 72"

Call for price

Stock GLHB7200 VIN 1FUJGLD59GLHB7200



Unit Specifications

Unit Specifications

Year	2016
Make	FREIGHTLINER
Model	Cascadia 125
Chassis Class	Tractor
Engine Make	Detroit
Engine Model	DD15 14.8L
Engine HP	505
Transmission Make	Detroit
Transmission	Auto
Transmission Speed	12
FA Capacity	12,350
RA Capacity	40,000
Rear Axle Ratio	3.42
Wheelbase	230
Current Meter Reading	891,061
Fuel Tank Capacity	200
Rear Suspension	Air Ride
Engine Fuel Type	Diesel
GVWR	52,350
Frame	Steel
Running Condition	Running