



Custom Truck One Source

Kansas City, MO

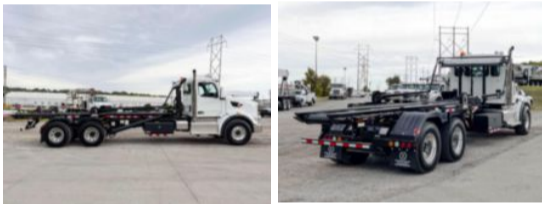
Phone: (816) 558-7290

<https://www.customtruck.com/locations>

2025 Peterbilt 567 6x4 Galbreath U5-OR-174 Roll-Off Truck

\$ 255,479

Stock SD717289 VIN 1NPCLP0X8SD717289



Truck Specifications		Unit Specifications	
Year	2025	Attachment Make	Galbreath
Make	Peterbilt	Attachment Model	U5-OR-174
Model	567	Rolloff Capacity (lb)	60000
Cab Type	REGULAR CAB	Roll Off Maximum Container Length (ft)	18
CA or CT	192	Roll Off Minimum Container Length (ft)	22
Chassis Class	CLASS 8 CHASSIS		
Engine Make	PACCAR		
Engine Model	MX-13 D		
Engine HP	455		
Transmission	Automatic		
Transmission Speed	6		
FA Capacity	20,000		
RA Capacity	46,000		
Wheelbase	260		
Current Meter Reading	540		
Brakes	AIR		
Rear Suspension	HENDRICKSON HMX460		
Engine Size	13		
Engine Fuel Type	Diesel		
Axle Config	6x4		
GVWR (lb)	33001+		
Frame	DOUBLE		

DISCLAIMER: Price quoted includes any applicable FET. Quoted price is Ex Works and does not include any freight / delivery charges, sales tax, titling fees, or registration fees. Specifications are believed to be correct but may contain errors and/or omissions. Pictures are representative and may not be identical. Description and Images Custom Truck One Source