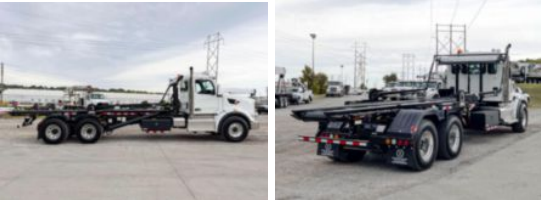


2025 Peterbilt 567 6x4 Galbreath U5-OR-174 Roll-Off Truck

\$ 255,479

Stock SD717286 VIN 1NPCLP0X2SD717286



Truck Specifications		Unit Specifications	
Year	2025	Attachment Make	Galbreath
Make	Peterbilt	Attachment Model	U5-OR-174
Model	567	Capacity (lb)	60,000
Cab Type	REGULAR CAB	Maximum Container Length (ft)	18
CA or CT	192	Minimum Container Length (ft)	22
Chassis Class	CLASS 8 CHASSIS		
Engine Make	PACCAR		
Engine Model	MX-13 D		
Engine HP	455		
Transmission	Automatic		
Transmission Speed	6		
FA Capacity	20,000		
RA Capacity	46,000		
Wheelbase	260		
Brakes	AIR		
Rear Suspension	HENDRICKSON HMX460		
Engine Size	13		
Engine Fuel Type	Diesel		
Axle Config	6x4		
GVWR (lb)	33001+		
Frame	DOUBLE		