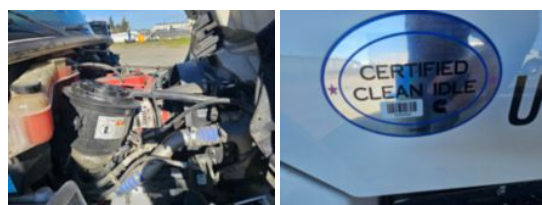
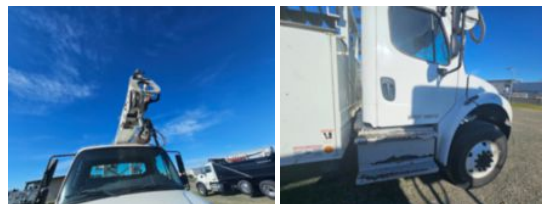


**2016 Freightliner M2 Diesel 4x4 Terex Commander C4047**

**Call for price**

Stock FDGR9744 VIN 3ALDCXDT4FDGR9744



Truck Specifications		Unit Specifications	
<b>Year</b>	2015	<b>Attachment Year</b>	2015
<b>Make</b>	FREIGHTLINER	<b>Attachment Make</b>	Terex
<b>Model</b>	M2106	<b>Attachment Model</b>	Commander 4047
<b>Chassis Class</b>	Truck		
<b>Engine Make</b>	Cummins		
<b>Engine Model</b>	ISB 6.7L		
<b>Engine HP</b>	250		
<b>Transmission Make</b>	Allison		
<b>Transmission</b>	Auto		
<b>Transmission Speed</b>	6		
<b>FA Capacity</b>	14,000		
<b>RA Capacity</b>	21,000		
<b>Rear Axle Ratio</b>	5.86		
<b>Wheelbase</b>	190		
<b>Current Meter Reading</b>	100,325		
<b>Fuel Tank Capacity</b>	50		
<b>Rear Suspension</b>	Air Ride		
<b>Engine Fuel Type</b>	Diesel		
<b>GVWR</b>	33,000		
<b>Frame</b>	Single		