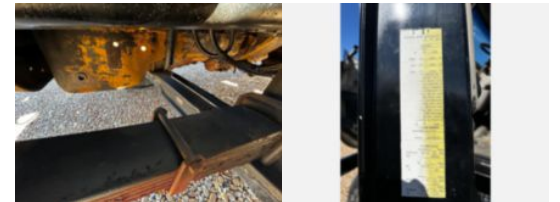
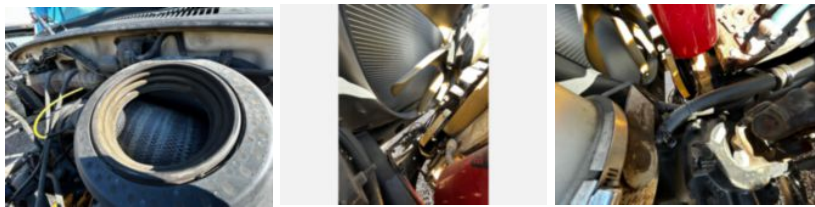
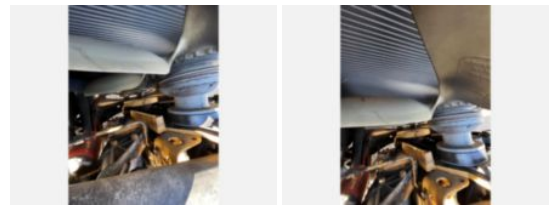
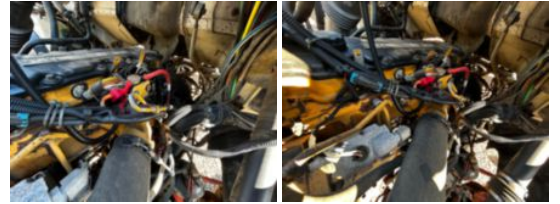


**2006 Tandem National 800 D - 23 Ton Boom Truck**

**\$ 85,000**

Stock 6AV17464 VIN 2FZHAWDC76AV17464



Truck Specifications		Unit Specifications	
<b>Year</b>	2006	<b>Attachment Make</b>	National
<b>Make</b>	STERLING	<b>Attachment Model</b>	800 D - 23 Ton
<b>Model</b>	L8500		
<b>Chassis Class</b>	Truck		
<b>Engine Make</b>	CAT		
<b>Engine Model</b>	3126 7.2L		
<b>Engine HP</b>	330		
<b>Transmission Make</b>	Eaton		
<b>Transmission</b>	Manual		
<b>Transmission Speed</b>	8LL		
<b>FA Capacity</b>	18,000		
<b>RA Capacity</b>	40,000		
<b>Current Meter Reading</b>	100,483		
<b>Fuel Tank Capacity</b>	100		
<b>Rear Suspension</b>	Walking Beam		
<b>Engine Fuel Type</b>	Diesel		
<b>GVWR</b>	58,000		
<b>Frame</b>	Steel		