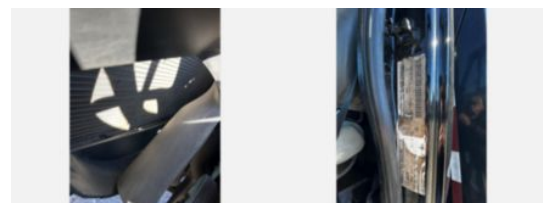
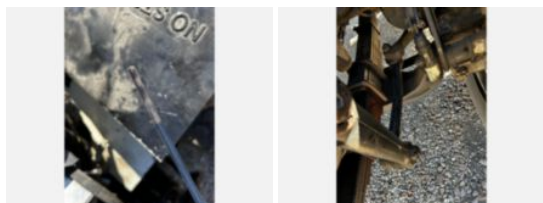
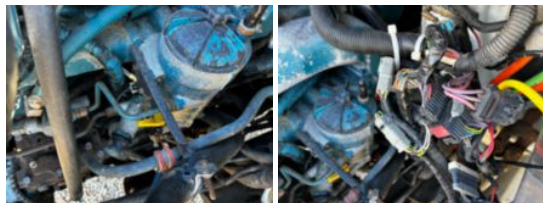
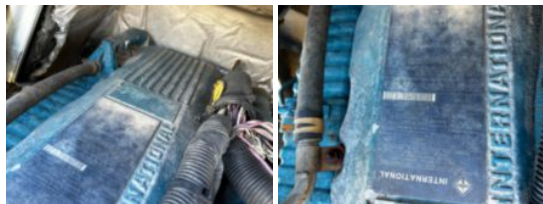


**2007 Tandem Manitex 800 D - 30 Ton Boom Truck**

**\$ 89,900**

Stock 7J506248 VIN 1HTWNAZT37J506248



| Truck Specifications         |               | Unit Specifications     |                |
|------------------------------|---------------|-------------------------|----------------|
| <b>Year</b>                  | 2007          | <b>Attachment Make</b>  | Manitex        |
| <b>Make</b>                  | INTERNATIONAL | <b>Attachment Model</b> | 800 D - 30 Ton |
| <b>Model</b>                 | 7500          |                         |                |
| <b>Chassis Class</b>         | Truck         |                         |                |
| <b>Engine Make</b>           | International |                         |                |
| <b>Engine Model</b>          | HT570 9.3L    |                         |                |
| <b>Engine HP</b>             | 330           |                         |                |
| <b>Transmission Make</b>     | Eaton         |                         |                |
| <b>Transmission</b>          | Manual        |                         |                |
| <b>Transmission Speed</b>    | 8LL           |                         |                |
| <b>FA Capacity</b>           | 20,000        |                         |                |
| <b>RA Capacity</b>           | 46,000        |                         |                |
| <b>Rear Axle Ratio</b>       | 4.63          |                         |                |
| <b>Current Meter Reading</b> | 63,427        |                         |                |
| <b>Fuel Tank Capacity</b>    | 80            |                         |                |
| <b>Rear Suspension</b>       | Walking Beam  |                         |                |
| <b>Engine Fuel Type</b>      | Diesel        |                         |                |
| <b>GVWR</b>                  | 66,000        |                         |                |
| <b>Frame</b>                 | Steel         |                         |                |

DISCLAIMER: Price is an estimation and does not include any freight/delivery charges, sales tax, titling fees, or registration fees. 8% buyer's fee applies on all purchases. Price is subject to change. Specifications are believed to be correct but may contain errors and/or omissions. Pictures shown represent the state of the vehicle at the time of the third-party, non-bias inspection. Unit is being sold AS-IS, WHERE-IS.