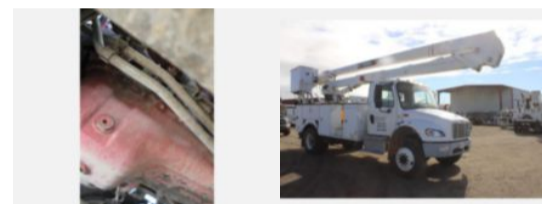
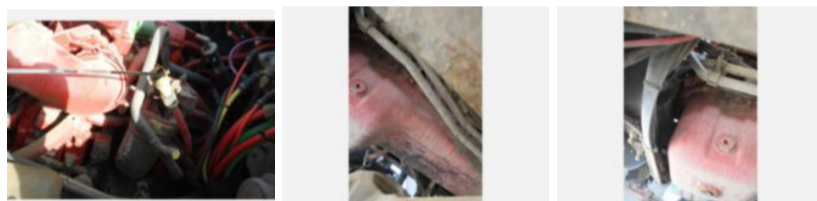


**2015 Freightliner M2 Diesel 4x4 Terex TC-55 Material**

**Call for price**

Stock FDGD2646 VIN 3ALDCXDT5FDGD2646



Truck Specifications		Unit Specifications	
<b>Year</b>	2015	<b>Attachment Year</b>	2014
<b>Make</b>	FREIGHTLINER	<b>Attachment Make</b>	Terex
<b>Model</b>	M2106	<b>Attachment Model</b>	TC55
<b>Cab Type</b>	REGULAR CAB	<b>Maximum Work</b>	60
<b>Chassis Class</b>	Truck		
<b>Engine Make</b>	Cummins		
<b>Engine Model</b>	6.7 Liter		
<b>Engine HP</b>	250		
<b>Transmission Make</b>	Allison		
<b>Transmission</b>	Auto		
<b>Transmission Speed</b>	5		
<b>FA Capacity</b>	14,000		
<b>RA Capacity</b>	21,000		
<b>Rear Axle Ratio</b>	5.57		
<b>Wheelbase</b>	190		
<b>Current Meter Reading</b>	105,225		
<b>Brakes</b>	AIR		
<b>Fuel Tank Capacity</b>	50		
<b>Rear Suspension</b>	Spring		
<b>Engine Size</b>	6.7		
<b>Engine Fuel Type</b>	Diesel		
<b>Axle Config</b>	4x4		
<b>GVWR</b>	33,000		
<b>Frame</b>	Steel		
<b>PTO Options</b>	YES		