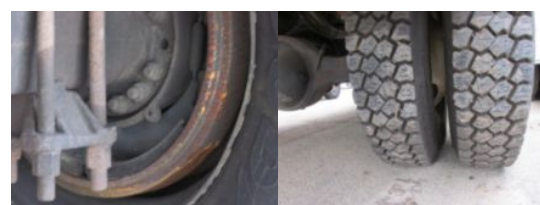


2016 Freightliner M2 Diesel 4x4 Terex Commander 4047
Call for price

Stock GHGW9530 VIN 1FVDCXDT6GHGW9530



Truck Specifications		Unit Specifications	
Year	2016	Attachment Year	2015
Make	FREIGHTLINER	Attachment Make	Terex
Model	M2106 W/Auger	Attachment Model	Commander 4047
Cab Type	REGULAR CAB		
CA or CT	120		
Chassis Class	Truck		
Engine Make	Cummins		
Engine Model	ISB 6.7		
Engine HP	250		
Transmission Make	Allison		
Transmission	Auto		
Transmission Speed	6		
FA Capacity	14000		
RA Capacity	21000		
Rear Axle Ratio	5.57		
Wheelbase	190		
Current Meter Reading	54315		
Brakes	HYDRAULIC		
Fuel Tank Capacity	50		
Rear Suspension	Spring		
Engine Size	6.7		
Engine Fuel Type	Diesel		
Axle Config	4x4		
GVWR	33000		
Frame	Steel		
PTO Options	YES		