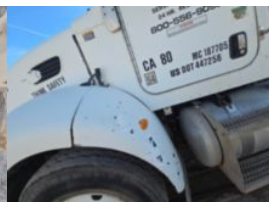


**2008 Peterbilt 340 Tandem Axle Cusco Vac-Truck**

**Call for price**

Stock 8M760079 VIN 2NPRLN9X88M760079



Truck Specifications		Unit Specifications	
Year	2008	Attachment Make	Cusco
Make	PETERBILT	Attachment Model	70BB
Model	340		
Chassis Class	Truck		
Engine Make	Paccar		
Engine Model	PX8 8.3L		
Engine HP	315		
Transmission Make	Eaton		
Transmission	Manual		
Transmission Speed	10		
FA Capacity	16,000		
RA Capacity	40,000		
Rear Axle Ratio	4.6		
Wheelbase	228		
Current Meter Reading	78,543		
Fuel Tank Capacity	100		
Rear Suspension	Air Ride		
Engine Fuel Type	Diesel		
GVWR	56,000		
Frame	Steel		