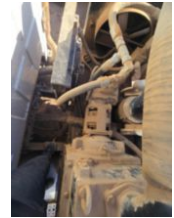
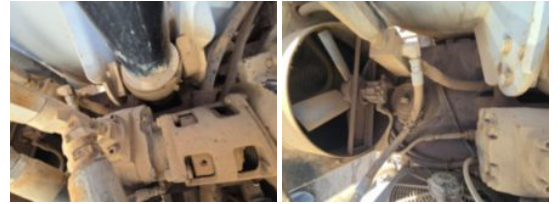


2009 Sterling LT-8500 Tandem Axle Cusco Vac-Truck

Call for price

Stock 9AAA8788 VIN 2FZHAWBS19AAA8788



Truck Specifications		Unit Specifications	
Year	2009	Attachment Make	Cusco
Make	STERLING	Attachment Model	70BB
Model	L8500		
Chassis Class	Truck		
Engine Make	Cummins		
Engine Model	ISC 8.3L		
Engine HP	330		
Transmission Make	Eaton-Fuller		
Transmission	Manual		
Transmission Speed	10		
FA Capacity	16000		
RA Capacity	40000		
Rear Axle Ratio	4.5		
Wheelbase	270		
Current Meter Reading	77380		
Fuel Tank Capacity	120		
Rear Suspension	Air Ride		
Engine Fuel Type	Diesel		
GVWR	56000		
Frame	Steel		