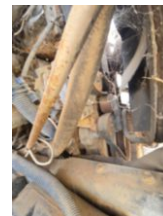
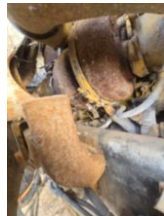
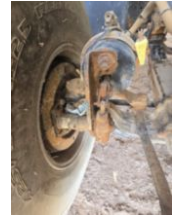
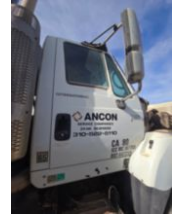


2007 Int'l 7600 Tandem Axle Vactor Guzzler Vac-Truck

Call for price

Stock 7J399284 VIN 1HTWYSBT87J399284



Truck Specifications		Unit Specifications	
Year	2007	Attachment Make	International
Make	INTERNATIONAL	Attachment Model	SF647
Model	SF647		
Chassis Class	Truck		
Engine Make	CAT		
Engine Model	c13 12.5l		
Engine HP	380		
Transmission Make	Eaton-Fuller		
Transmission	Manual		
Transmission Speed	10		
FA Capacity	16000		
RA Capacity	40000		
Rear Axle Ratio	4.56		
Wheelbase	242		
Fuel Tank Capacity	75		
Rear Suspension	Air Ride		
Engine Fuel Type	Diesel		
GVWR	56000		
Frame	Steel		