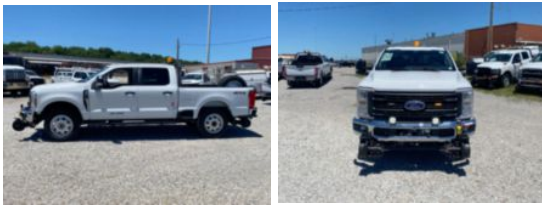


2024 Ford F250 4x4 Hi-Rail Pickup Truck

\$ 105,960

Stock REC07201 VIN 1FTW2BA4REC07201



Hi-Rail Specifications

Unit Specifications

Year	2024
Make	Ford
Model	F250
Cab Type	CREW CAB
CA or CT	84
Chassis Class	CLASS 2 CHASSIS
Engine Make	Ford
Engine Model	6.8L G
Engine HP	405
Transmission	Automatic
Transmission Speed	10
FA Capacity	6,000
RA Capacity	6,200
Wheelbase	160
Brakes	HYDRAULIC
Rear Suspension	SPRING
Engine Size	6.8
Engine Fuel Type	Gas
Axle Config	4x4
GVWR	10,000
Frame	SINGLE