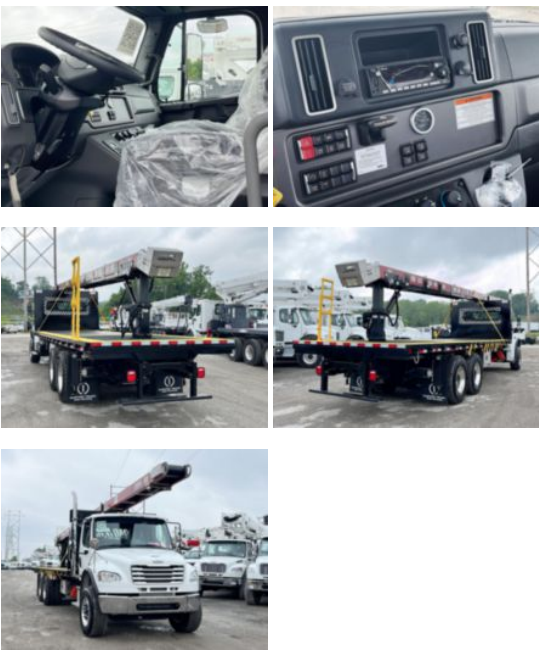


2025 Freightliner M2106 6x4 Load King Premier 40'

\$ 209,120

StockSDVR6724VIN3ALHCYFE2SDVR6724



Truck Specifications		Unit Specifications	
CARB Registered	No	Attachment Year	2023
Year	2025	Attachment Make	Load King
Make	Freightliner	Attachment Model	Premier 40'
Model	M2106		
Cab Type	REGULAR CAB		
CA or CT	213		
Chassis Class	CLASS 8 CHASSIS		
Engine Make	CUMMINS		
Engine Model	L9 D		
Engine HP	350		
Transmission	Automatic		
Transmission Speed	6		
FA Capacity	20,000		
RA Capacity	46,000		
Wheelbase	279		
Brakes	AIR		
Rear Suspension	AIR		
Engine Size	L9 D		
Engine Fuel Type	Diesel		
Axle Config	6x4		
GVWR (lb)	33001+		
Frame	11125356438S		
PTO Options	YES		