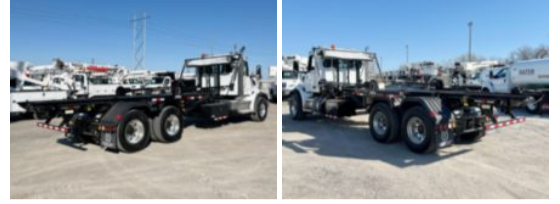


2025 Peterbilt 567 6x4 Galbreath U5-OR-174 Roll-Off Truck

Call for price

Stock SD714480 VIN 1NPCL40X7SD714480



| Truck Specifications | | Unit Specifications | |
|----------------------|-----------------|---------------------|-----------|
| Year | 2025 | Attachment Make | Galbreath |
| Make | Peterbilt | Attachment Model | U5-OR-174 |
| Model | 567 | | |
| Cab Type | REGULAR CAB | | |
| CA or CT | 192 | | |
| Chassis Class | CLASS 8 CHASSIS | | |
| Engine Make | CUMMINS | | |
| Engine Model | X15 D | | |
| Engine HP | 450 | | |
| Transmission | Automatic | | |
| Transmission Speed | 6 | | |
| FA Capacity | 20000 | | |
| RA Capacity | 46000 | | |
| Wheelbase | 266 | | |
| Brakes | AIR DISC | | |
| Rear Suspension | HMXEX460 | | |
| Engine Size | 14.9 | | |
| Engine Fuel Type | Diesel | | |
| Axle Config | 6x4 | | |
| GVWR | 33001+ | | |
| Frame | 10750350375I | | |
| PTO Options | YES | | |