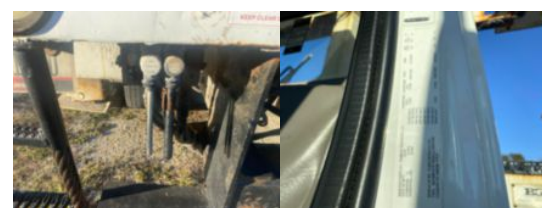


2017 Freightliner M2 4x4 Diesel Terex C4047 Digger
Call for price

Stock HHHG1337 VIN 1FVDCYDT8HHHG1337



Truck Specifications		Unit Specifications	
Year	2017	Attachment Year	2016
Make	FREIGHTLINER	Attachment Make	Terex
Model	M2106	Attachment Model	Commander 4047
Cab Type	REGULAR CAB		
CA or CT	120		
Chassis Class	Truck		
Engine Make	Cummins		
Engine Model	ISB 6.7L		
Engine HP	250		
Transmission Make	Allison		
Transmission	Auto		
Transmission Speed	5		
FA Capacity	14000		
RA Capacity	21000		
Rear Axle Ratio	5.57		
Wheelbase	218		
Current Meter Reading	67562		
Brakes	AIR		
Fuel Tank Capacity	50		
Rear Suspension	Spring		
Engine Size	6.7		
Engine Fuel Type	Diesel		
Axle Config	4x4		
GVWR	35000		
Frame	Steel		
PTO Options	YES		