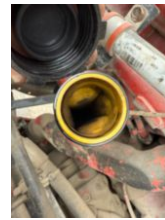


2020 Tandem Ox (2019) Maverick Dump Truck

\$ 159,000

Stock LN862422 VIN 3HTDTAPT9LN862422



| Truck Specifications | | Unit Specifications | |
|------------------------------|---------------|-------------------------|-----------|
| Year | 2020 | Attachment Make | Ox (2019) |
| Make | INTERNATIONAL | Attachment Model | Maverick |
| Model | HX620 SBA | | |
| Chassis Class | Tractor | | |
| Engine Make | Cummins | | |
| Engine Model | X15 14.9L | | |
| Engine HP | 450 | | |
| Transmission Make | Eaton-Fuller | | |
| Transmission | Manual | | |
| Transmission Speed | 8LL | | |
| FA Capacity | 13500 | | |
| RA Capacity | 46000 | | |
| Rear Axle Ratio | 4.10 | | |
| Wheelbase | 220 | | |
| Current Meter Reading | 130690 | | |
| Fuel Tank Capacity | 100 | | |
| Rear Suspension | Walking Beam | | |
| Engine Fuel Type | Diesel | | |
| GVWR | 73820 | | |
| Frame | Steel | | |