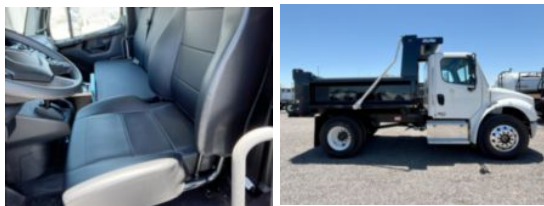


**2025 Freightliner M2106 4x2 10' Load King Dump Truck**
**\$ 126,338**

Stock SDVZ0227 VIN 3ALACWFC7SDVZ0227



| Truck Specifications      |                 | Unit Specifications          |               |
|---------------------------|-----------------|------------------------------|---------------|
| <b>CARB Registered</b>    | No              | <b>Attachment Year</b>       | 2024          |
| <b>Year</b>               | 2025            | <b>Bed/Body Make</b>         | Load King     |
| <b>Make</b>               | Freightliner    | <b>Bed/Body Model</b>        | LKSD10X293/16 |
| <b>Model</b>              | M2106           | <b>Dump Body Length (ft)</b> | 10            |
| <b>Cab Type</b>           | REGULAR CAB     | <b>Dump Body Type</b>        | Square        |
| <b>CA or CT</b>           | 86              | <b>Dump Load (cu yd)</b>     | 6             |
| <b>Chassis Class</b>      | CLASS 6 CHASSIS |                              |               |
| <b>Engine Make</b>        | CUMMINS         |                              |               |
| <b>Engine Model</b>       | 6.7L D          |                              |               |
| <b>Engine HP</b>          | 300             |                              |               |
| <b>Transmission</b>       | Automatic       |                              |               |
| <b>Transmission Speed</b> | 6               |                              |               |
| <b>FA Capacity</b>        | 12,000          |                              |               |
| <b>RA Capacity</b>        | 21,000          |                              |               |
| <b>Wheelbase</b>          | 152             |                              |               |
| <b>Brakes</b>             | AIR             |                              |               |
| <b>Rear Suspension</b>    | SPRING          |                              |               |
| <b>Engine Size</b>        | 6.7             |                              |               |
| <b>Engine Fuel Type</b>   | Diesel          |                              |               |
| <b>Axle Config</b>        | 4x2             |                              |               |
| <b>GVWR (lb)</b>          | 26,000          |                              |               |
| <b>Frame</b>              | SINGLE          |                              |               |
| <b>PTO Options</b>        | YES             |                              |               |