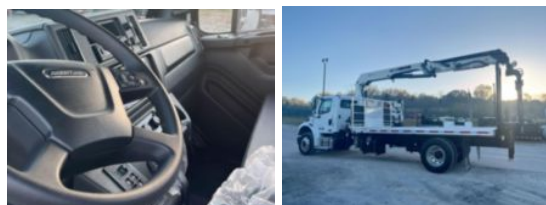


2025 Freightliner M2106 4x2 IMT 1730L Drywall Crane
\$ 258,000

Stock SDVP9923 VIN 3ALACWFE3SDVP9923



Truck Specifications		Unit Specifications	
CARB Registered	No	Attachment Year	2024
Year	2025	Attachment Make	IMT
Make	Freightliner	Attachment Model	1730L
Model	M2106	Bed/Body Make	Load King
Cab Type	REGULAR CAB	Bed/Body Model	LK16_0X102FB
CA or CT	175		
Chassis Class	CLASS 6 CHASSIS		
Engine Make	CUMMINS		
Engine Model	L9 D		
Engine HP	330		
Transmission	Automatic		
Transmission Speed	6		
FA Capacity	10,000		
RA Capacity	17,500		
Wheelbase	240		
Brakes	AIR		
Rear Suspension	SPRING		
Engine Size	L9 D		
Engine Fuel Type	Diesel		
Axle Config	4x2		
GVWR	26,000		
Frame	10188350344S		
PTO Options	YES		