



**Custom Truck One Source**

Kansas City, MO

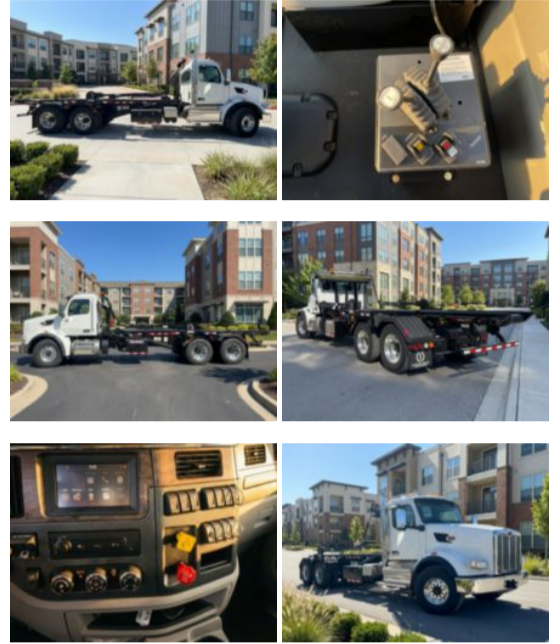
Phone: (816) 256-3200

<https://www.customtruck.com/locations>

**2025 Peterbilt 567 6x4 Galbreath U5-OR-174 Roll-Off Truck**

**\$ 260,945**

Stock SD714462 VIN 1NPCL40X5SD714462



Truck Specifications		Unit Specifications	
<b>CARB Registered</b>	No	<b>Attachment Make</b>	Galbreath
<b>Year</b>	2025	<b>Attachment Model</b>	U5-OR-174
<b>Make</b>	Peterbilt	<b>Rolloff Capacity (lb)</b>	60000
<b>Model</b>	567	<b>Roll Off Maximum Container Length (ft)</b>	22
<b>Cab Type</b>	REGULAR CAB	<b>Roll Off Minimum Container Length (ft)</b>	18
<b>CA or CT</b>	192		
<b>Chassis Class</b>	CLASS 8 CHASSIS		
<b>Engine Make</b>	CUMMINS		
<b>Engine Model</b>	X15 D		
<b>Engine HP</b>	450		
<b>Transmission</b>	Automatic		
<b>Transmission Speed</b>	6		
<b>FA Capacity</b>	20,000		
<b>RA Capacity</b>	46,000		
<b>Wheelbase</b>	266		
<b>Current Meter Reading (mi)</b>	537		
<b>Brakes</b>	AIR DISC		
<b>Rear Suspension</b>	HMXEX460		
<b>Engine Size</b>	14.9		
<b>Engine Fuel Type</b>	Diesel		
<b>Axle Config</b>	6x4		
<b>GVWR (lb)</b>	33001+		
<b>Frame</b>	DOUBLE		
<b>PTO Options</b>	YES		

DISCLAIMER: Price quoted includes any applicable FET. Quoted price is Ex Works and does not include any freight / delivery charges, sales tax, titling fees, or registration fees. Specifications are believed to be correct but may contain errors and/or omissions. Pictures are representative and may not be identical. Description and Images Custom Truck One Source