



# 2020 International HV507 4x4 Cab & Chassis

Equipment# A0118021

## CHASSIS SPECS

### UNIT INFORMATION

VIN:3HAEEMN2LL888791

Dash: 30,496 Miles

Single Axle

Wheelbase: 199 In.

Cab To Axle: 124 In.

Cab To EOF: 198 In.

Air Brakes

Single Frame

Pintle Hitch W/Air & Electric

### CAB FEATURES

Standard Daycab

Aerodynamic Mirrors

Air & City Horns

### INTERIOR FEATURES

Mid-Level Interior

A/C Equipped

Manual Windows

Manual Door Locks

High Back Air Ride

Driver Seat

Mid Back Fixed

2-Passenger Bench Seat

Cruise Control

Fixed Steering Column

AM/FM

### GVWR

33,000 Lbs.

### FRONT AXLE

14,000 Lbs. FAWR

### REAR AXLES

20,000 Lbs. RAWR

Ratio: 5.57

### REAR SUSPENSION

Leaf Spring

### ENGINE

Cummins B6.7

250 Horsepower

S/N: 074599681

Dash: 4,204 Hours

Block Heater

RH Horizontal Exhaust

### TRANSMISSION

Allison 3500 RDS

### TIRES/WHEELS

Front Tire: 12R22.5

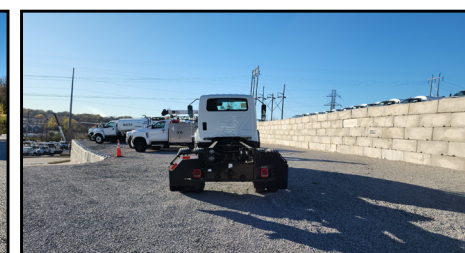
Front Wheel: Steel

Rear Tire: 12R22.5

Rear Wheel: Steel

### FUEL TANK(S)

LH 50 Gallon Aluminum



**Unit Being Sold As-Is/Where-Is  
Qualifies For An Extended Warranty!  
See Pages 2 & 3 For Warranty Details**

888-684-8146 [www.customtruck.com](http://www.customtruck.com)

ASK ABOUT THE CUSTOMIZED AND FLEXIBLE LEASING & FINANCING SOLUTIONS AVAILABLE FROM CUSTOM TRUCK CAPITAL

DISCLAIMER: Specifications are believed to be correct, but may contain errors and/or omissions. Pictures are representative and may not be identical.

Click / Scan For Info



PRICE: \$93,500  
STOCK#: LL888791  
EX WORKS: Kansas City, MO

QUOTE NUMBER: AD2.14-K\_24 Tier A EXPIRATION DATE: 06/30/2025



# Specialty Trucks Warranty

CLASS 3-8, up to 20 years including the current calendar year; start miles <900K for Agriculture High Mileage Vehicles; <400K for All Other Vehicles.

**RETAIL**  
Rates As Of November 16, 2020

## Each Warranty Program Includes:

Engine, Critical Components (turbos, fuel injectors, fuel pump, water pump, ECM), Transmission and Rear Differential.

TRUCKS FROM RENTAL FLEETS	Class 3-5	Class 6-8
24 Months / 50,000 Miles	\$2,600	<b>\$3,000</b>
TRUCKS SOURCED OUTSIDE RENTAL FLEETS	Class 3-5	Class 6-8
12 Months / 25,000 Miles	\$2,400	\$2,700
12 Months / 50,000 Miles	\$2,800	\$3,200
24 Months / 50,000 Miles	\$3,000	\$3,500
24 Months / 100,000 Miles	\$3,500	\$4,000
AGRICULTURAL - LOW MILES <small>(Financed by Custom Trucks)</small>	Class 3-5	Class 6-8
12 Months / 20,000 Miles	\$2,100	\$2,300
24 Months / 20,000 Miles	\$2,300	\$2,600
36 Months / 30,000 Miles	\$2,500	\$3,000
AGRICULTURAL - HIGH MILES	Class 3-5	Class 6-8
12 Months / 10,000 Miles	\$2,200	\$2,500
24 Months / 20,000 Miles	\$2,400	\$2,700

**\$350 deductible per occurrence**

**Additional coverage options**

**Aftertreatment**  
(must match warranty term)

12 Months	24 Months	36 Months
\$950	<b>\$1,250</b>	\$1,550

**Comfort Package**  
(must match warranty term)

12 Months	24 Months	36 Months
\$799	<b>\$950</b>	\$1,100

Rates as of November 16, 2020

See contract for all details. See back for coverage summary. All costs are in US dollars.



# Specialty Trucks Warranty

CLASS 3-8, up to 20 years including the current calendar year; start miles <900K for Agriculture High Mileage Vehicles; <400K for All Other Vehicles.

## Covered Components Summary

CC = Included in Critical Components  
LOL = Limits of Liability

Coverage Exclusions: Please refer to your contract for complete list and details of covered and non-covered items.

### Engine (LOL: \$15,000 for Class 3-5; \$22,500 for Class 6-8)

#### Engine's internally lubricated hard parts include:

- Camshaft and Cam Bearings
- Cam Followers
- Connecting Rods
- Connecting Rod Bearings
- Connecting Rod Caps and Screws
- Crankshaft
- Cylinder Block Casting
- Cylinder Head
- Cylinder Head Gasket
- Cylinder Liners
- Cylinder Head Bolts
- Hydraulic Lifters
- Injector Cups
- Intake and Exhaust Valves
- Intake and Exhaust Valve Guides
- Main Bearings
- Oil Cooler and Housing
- Oil Pan
- Oil Pump Pick Up Screen
- Oil Pump Pick Up Tube\*
- Oil Pump Pressure Relief Springs and Valves
- Pistons, Piston Rings, and Piston Oil Cooling Jets
- Pushrods
- Rocker Arms and Rocker Arm Shafts
- Thrust Washers
- Timing Gears
- Timing Gear Cover and Housing
- Valve Cover
- Valve Retainers and Keepers (Locks)
- Valve Seats
- Valve Springs
- Wrist Pins

#### \*"Non-oil" related components:

- Exhaust Manifold
- Thermostat Housing
- Flywheel Housing
- Vibration Dampener
- Intake Manifold

\* For Detroit Diesels, breakdowns originating from the "oil pump pick up tube O-ring" will only be covered if the TSB D18M3 has been performed by a certified OEM repair shop.

### (CC) Turbo (LOL \$7,500)

#### Turbochargers include:

- Bearings
- Internal Variable Vane Assembly
- Turbine and Turbine Shaft
- Turbo Actuator

### Transmission

(LOL: \$6,000 for Class 3-5; \$7,500 for Class 6-8)

#### Internally lubricated hard parts of the manual or automatic transmission include:

- Bands
- Bearings
- Blockers
- Bushings
- Drums
- Gear Sets
- Governor
- Oil Pump
- Shaft(s)
- Shift Forks
- Synchronizers
- Thrust Washers
- Torque Converter
- Valve Body

### Differential

(LOL: \$6,000 for Class 3-5; \$7,500 for Class 6-8)

#### Internally lubricated hard parts include:

- Axle Housing
- Axle Shafts
- Bearings
- Bushings
- Carrier Case
- Gear Sets
- Limited Slip Clutch Pack

#### Power divider includes:

- Bearings
- Gears
- Shafts
- Shift Forks

### (CC) Engine Fuel Injectors, Water Pump, Fuel Pump & ECM

(LOL \$5,000)

#### Covered Components:

- Complete Injector
- Fuel Injector Hard Lines
- Fuel Injection Pump
- Fuel Pump
- Engine Control Module (ECM)
- Water Pump

### Progressive Damage, Wearout & Carbon Packing

Please refer to your contract for details on Progressive Damage, Wearout and Carbon Packing coverage.

### Eligibility

- Class 3-8: Start miles up to 900,000 miles (on odometer or ECM), whichever is greater, for Agriculture High Mileage Vehicles and up to 400,000 miles for All Other Vehicles
- Class 3-5 warranty expiration capped at 500,000 total miles
- Class 6-8 warranty expiration capped at 1,000,000 total miles
- Model age must be 20 years from current year or newer

### Aftertreatment, Model Year 2014 & Older (LOL: \$7,000 for Class 3-5; \$8,000 for Class 6-8)

#### Covered Components:

- Aftertreatment Electronic Control Module (ACM)
- Diesel Exhaust Fluid (DEF) Module with Injection Nozzle
- DEF Tank
- Diesel Oxidation Catalyst (DOC)
- DOC Doser Injector
- Diesel Particulate Filter (DPF)
- DPF Dosing Module
- Exhaust Gas Recirculation (EGR) Valves
- EGR Cooler(s)
- Hydrocarbon Doser Injector (HC Doser, 7th Injector, ARD, AHI Module)
- Selective Catalytic Reduction (SCR) Catalyst
- Sensor, Lambda (O<sub>2</sub> Sensor)
- Sensor, NOx (2)

### Comfort Package (LOL \$6,000)

- Alternator
- Charge Air Cooler
- Engine Air Compressor
- Fan Clutch
- Fuel Tanks, Cap, & Valve
- HVAC Air Compressor & Pulley
- HVAC Blower Motor & Resistor
- HVAC Fan Hub
- HVAC Heater Core
- HVAC Temperature Controls, Control Head, & Control Valves
- Radiator & Radiator Cap
- Radio
- Starter & Starter Solenoid

### Aftertreatment, Model Year 2015 & Newer (LOL: \$7,000 for Class 3-5; \$8,000 for Class 6-8)

#### Covered Components:

- Aftertreatment Electronic Control Module (ACM)
- Back Pressure Control Valve (BPV)
- Diesel Exhaust Fluid (DEF) Module with Injection Nozzle
- DEF Heater Control Relay
- DEF Dosing Module - Wiring Harness
- DEF Heated Lines (3)
- DEF Heater Coolant Control Valve
- DEF Heating Elements
- DEF Heating Fittings (3 on Supply Module)
- DEF Pump and Module
- DEF Solution Level/Temperature Sensor
- DEF Tank
- Diesel Oxidation Catalyst (DOC)
- Diesel Particulate Filter (DPF)
- DPF Air, Fuel, and Coolant Lines
- DPF Air, Fuel, Manifold Assembly
- DPF Dosing Module
- Exhaust Gas Recirculation (EGR) Valves
- EGR Actuator
- EGR Connecting Bellows and Clamps
- EGR Cooler(s)
- Exhaust Piping, Clamps, and Gaskets
- Exhaust Throttle Valve
- Hydrocarbon Doser Injector (HC Doser, 7th Injector, ARD, AHI Module)
- Hydrocarbon Doser Valve - Air, Fuel, and Coolant Lines; and Inline Air Filter
- Hydrocarbon Doser Valve (Voss Valve)
- Selective Catalytic Reduction (SCR) Catalyst
- SCR Decomposition Pipe and Pipe Elbows
- Sensor, BPV Pressure
- Sensor, Delta P (DPF Pressure)
- Sensor, DOC Inlet Pressure
- Sensor, DOC (Post) Temperature
- Sensor, DOC (Pre) Temperature
- Sensor, DPF Air Supply Pressure
- Sensor, DPF Back Pressure
- Sensor, DPF Fuel Pressure
- Sensor, Lambda (O<sub>2</sub> Sensor)
- Sensor, NOx (2)
- Sensor, Pressure After Exhaust Throttle Valve
- Sensor, SCR (Post) Temperature
- Sensor, SCR (Pre) Temperature
- Wiring Harness - Emission Systems (including overlay)

### Underwriting

- Continuing OEM maintenance recommendations must be followed
- Check fault codes & perform preventative maintenance
- Visual inspection of warranted components: identify leaks at seals, gaskets, and housing; verify engine performance (i.e. skips, misses, knocking, etc.)
- Road test /performance evaluation to identify performance & operational issues
- Repair identified deficiencies to maintain ROs of related underwriting repairs
- Wrap coverage begins at expiration of prior OEM coverage (by age or mileage)
- New engine oil and filter required