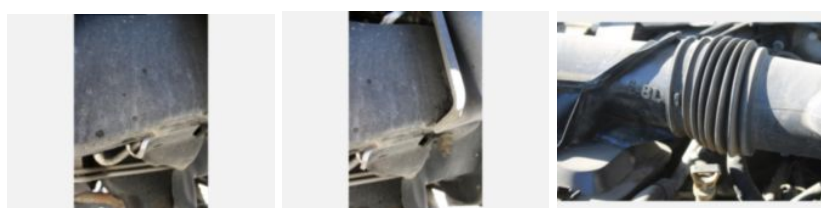
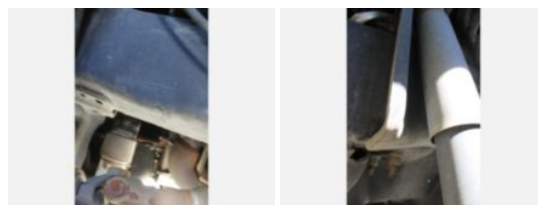
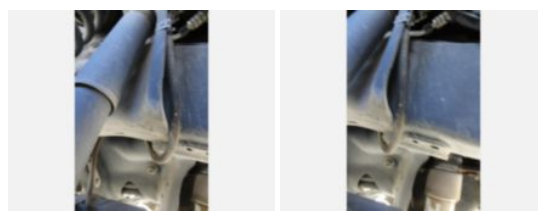
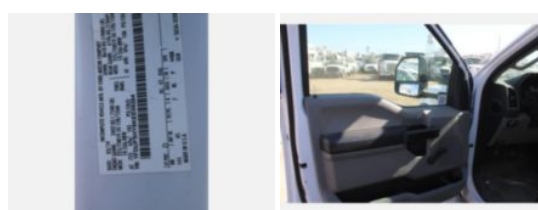


2006 Terex TL38 / 2019 Ford F550 4x4 Bucket Truck
Call for price

Stock KEE59284 VIN 1FDUF5HY8KEE59284



Truck Specifications		Unit Specifications	
Year	2019	Attachment Year	2006
Make	FORD	Attachment Make	Terex
Model	F550	Attachment Model	TL38
Cab Type	REGULAR CAB		
CA or CT	60		
Chassis Class	Truck		
Engine Make	Ford		
Engine Model	6.8 V10		
Engine HP	362		
Transmission Make	Ford		
Transmission	Auto		
Transmission Speed	6		
FA Capacity	7500		
RA Capacity	13660		
Rear Axle Ratio	4.88		
Wheelbase	145		
Current Meter Reading	135067		
Brakes	HYDRAULIC		
Fuel Tank Capacity	50		
Rear Suspension	Spring		
Engine Size	6.8		
Engine Fuel Type	Gasoline		
Axle Config	4x4		
GVWR	19000		
Frame	Steel		
PTO Options	YES		