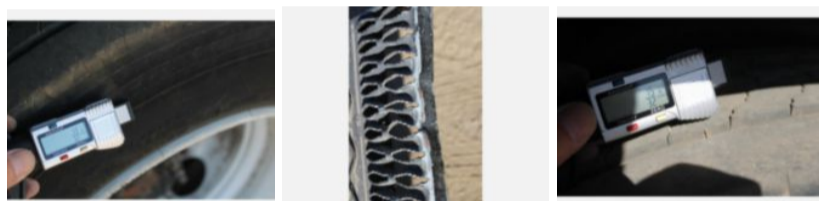
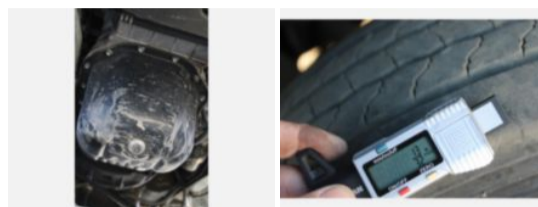
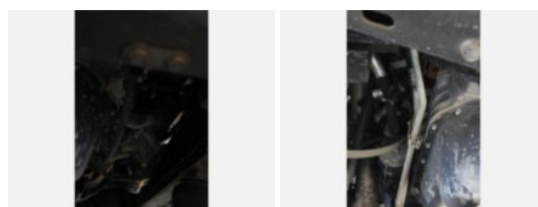


2008 Terex LT38 / 2008 GMC C5500 4x2 Bucket Truck

Call for price

Stock 8F415763 VIN 1GDE5C1978F415763



Truck Specifications		Unit Specifications	
Year	2008	Attachment Year	2008
Make	GMC	Attachment Make	Terex
Model	5500	Attachment Model	LT38
Cab Type	REGULAR CAB		
CA or CT	60		
Chassis Class	Truck		
Engine Make	GM		
Engine Model	6.6 LTR Duramax		
Engine HP	300		
Transmission Make	Allison		
Transmission	Auto		
Transmission Speed	6		
FA Capacity	7000		
RA Capacity	13500		
Rear Axle Ratio	4.78		
Wheelbase	133		
Current Meter Reading	34907		
Brakes	HYDRAULIC		
Rear Suspension	Spring		
Engine Size	6.6		
Engine Fuel Type	Diesel		
Axle Config	4x2		
GVWR	19500		
Frame	Steel		
PTO Options	YES		