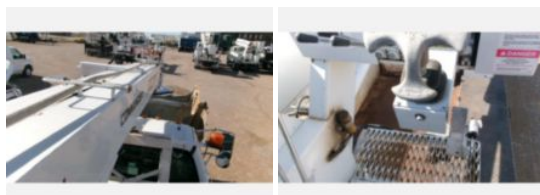


2014 Terex Commander 4047 / 2015 Ford F750 4x2 Digger
Call for price

Stock FV639996 VIN 3FRXF7FK0FV639996



Truck Specifications		Unit Specifications	
Year	2015	Attachment Year	2014
Make	FORD	Attachment Make	Terex
Model	F750	Attachment Model	Commander 4047
Cab Type	REGULAR CAB		
CA or CT	120		
Chassis Class	Truck		
Engine Make	Cummins		
Engine Model	ISB 6.7L		
Engine HP	260		
Transmission Make	Allison		
Transmission	Auto		
Transmission Speed	6		
FA Capacity	13200		
RA Capacity	21000		
Rear Axle Ratio	5.57		
Wheelbase	194		
Current Meter Reading	71690		
Brakes	AIR		
Fuel Tank Capacity	50		
Rear Suspension	Spring		
Engine Size	6.7		
Engine Fuel Type	Diesel		
Axle Config	4x2		
GVWR	33000		
Frame	Steel		
PTO Options	YES		