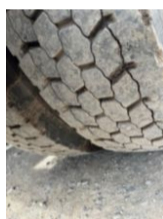
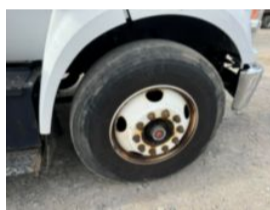
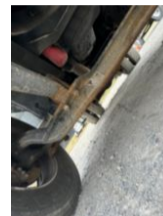


2018 Ford F750 4x2 Versalift VTP-40-NE Cable Placer Diesel

Call for price

Stock JDF04178 VIN 1FDNF7DC7JDF04178



Pulling Tensioning		Unit Specifications	
Year	2018	Attachment Year	2018
Make	FORD	Attachment Make	Versalift
Model	F750	Attachment Model	VTP-40-NE
Cab Type	REGULAR CAB		
Chassis Class	Truck		
Engine Make	Ford		
Engine Model	6.7 POWERSTROKE		
Engine HP	270		
Transmission Make	Ford		
Transmission	Auto		
Transmission Speed	6		
FA Capacity	12000		
RA Capacity	21000		
Rear Axle Ratio	6.50		
Wheelbase	158		
Current Meter Reading	54199		
Brakes	HYDRAULIC		
Fuel Tank Capacity	50		
Rear Suspension	Spring		
Engine Size	6.7		
Engine Fuel Type	Diesel		
Axle Config	4x2		
GVWR	25999		
Frame	Steel		
PTO Options	YES		