



Custom Truck One Source

Bakersfield, CA

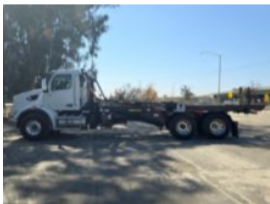
Phone: (661) 392-0092

<https://www.customtruck.com/locations>

2025 Peterbilt 567 6x4 Spartan SRO60SC Roll-Off Truck

\$ 275,175

Stock SD720182 VIN 1NPCLP0X5SD720182



Truck Specifications		Unit Specifications	
Year	2025	Attachment Year	2024
Make	Peterbilt	Attachment Make	Spartan
Model	567	Attachment Model	SRO60SC
Cab Type	REGULAR CAB		
CA or CT	192		
Chassis Class	CLASS 8 CHASSIS		
Engine Make	PACCAR		
Engine Model	MX-13 D		
Engine HP	510		
Transmission	Automatic		
Transmission Speed	6		
FA Capacity	20000		
RA Capacity	46000		
Wheelbase	260		
Brakes	AIR		
Rear Suspension	HMXEX460		
Engine Size	13		
Engine Fuel Type	Diesel		
Axle Config	6x4		
GVWR	33001+		
Frame	10750350375I		
PTO Options	YES		

DISCLAIMER: Price quoted includes any applicable FET. Quoted price is Ex Works and does not include any freight / delivery charges, sales tax, titling fees, or registration fees. Specifications are believed to be correct but may contain errors and/or omissions. Pictures are representative and may not be identical. Description and Images Custom Truck One Source