



# 2018 Dodge Ram 5500 4x4 Crew Cab Manhauler

Equipment# 220157

## CHASSIS SPECS

### UNIT INFORMATION

VIN: 3C7WRNFLXJG284817  
Dash: 98,985 Miles  
Single Axle  
Hydraulic Brakes  
Hitch Receiver W/Electric

### CAB FEATURES

Crew Cab  
Tow Mirrors  
City Horn

### INTERIOR FEATURES

Mid Level Interior  
A/C Equipped  
Power Windows  
Power Door Locks  
High Back Adjustable Driver Seat  
High Back Adjustable Passenger Seat  
Mid Back Fixed Rear Bench Seat  
Fold Down Center Console  
Cruise Control  
Tilt Steering Column  
AM/FM/AUX/Bluetooth  
Map Lights

### GVWR

19,500 LBS.

### FRONT AXLE

7,250 LBS.

### REAR AXLE(S)

13,500 LBS.

### REAR SUSPENSION

Spring

### ENGINE

Cummins 6.7L  
325 Horsepower  
S/N: 58951761  
RH Horizontal Exhaust  
Dash: 3236 Hours

### TRANSMISSION

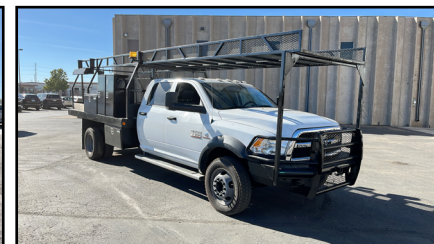
Automatic

### TIRES/WHEELS

Front Tire: 225/70R19.5  
Front Wheel: Steel  
Rear Tire: 225/70R19.5  
Rear Wheel: Steel

## EQUIPMENT SPECS

Parkhurst Flatbed  
Length: 12 Ft.  
Width: 8 Ft.  
Full Length Material Rack  
HD Brush Guard  
LH (4) Toolboxes  
RH (4) Toolboxes



**Unit Being Sold AS-IS/WHERE-IS  
Qualifies For An Extended Warranty!  
See Pages 2 & 3 For Warranty Details**

888-684-8146      www.customtruck.com

ASK ABOUT THE CUSTOMIZED AND FLEXIBLE LEASING & FINANCING SOLUTIONS AVAILABLE FROM CUSTOM TRUCK CAPITAL  
DISCLAIMER: Specifications are believed to be correct, but may contain errors and/or omissions. Pictures are representative and may not be identical.

Click / Scan For Info



PRICE: \$51,500  
STOCK#: JG284817  
EX WORKS: Commerce City, CO

QUOTE NUMBER: AD1.24-J\_24 Tier A      EXPIRATION DATE: 06/30/2025



# Specialty Trucks Warranty

**RETAIL**  
Rates As Of November 16, 2020

CLASS 3-8, up to 20 years including the current calendar year; start miles <900K for Agriculture High Mileage Vehicles; <400K for All Other Vehicles.

## Each Warranty Program Includes:

Engine, Critical Components (turbo, fuel injectors, fuel pump, water pump, ECM), Transmission and Rear Differential.

TRUCKS FROM RENTAL FLEETS	Class 3-5	Class 6-8
24 Months / 50,000 Miles	\$2,600	\$3,000
TRUCKS SOURCED OUTSIDE RENTAL FLEETS	Class 3-5	Class 6-8
12 Months / 25,000 Miles	\$2,400	\$2,700
12 Months / 50,000 Miles	\$2,800	\$3,200
24 Months / 50,000 Miles	\$3,000	\$3,500
24 Months / 100,000 Miles	\$3,500	\$4,000
AGRICULTURAL - LOW MILES <small>(Financed by Custom Trucks)</small>	Class 3-5	Class 6-8
12 Months / 20,000 Miles	\$2,100	\$2,300
24 Months / 20,000 Miles	\$2,300	\$2,600
36 Months / 30,000 Miles	\$2,500	\$3,000
AGRICULTURAL - HIGH MILES	Class 3-5	Class 6-8
12 Months / 10,000 Miles	\$2,200	\$2,500
24 Months / 20,000 Miles	\$2,400	\$2,700

**\$350 deductible per occurrence**

**Additional coverage options**

<b>Aftertreatment</b> <small>(must match warranty term)</small>	12 Months \$950	24 Months <b>\$1,250</b>	36 Months \$1,550	<b>Comfort Package</b> <small>(must match warranty term)</small>	12 Months \$799	24 Months <b>\$950</b>	36 Months \$1,100
--	-----------------	--------------------------	-------------------	---	-----------------	------------------------	-------------------

Rates as of November 16, 2020

See contract for all details. See back for coverage summary. All costs are in US dollars.



# Specialty Trucks Warranty

CLASS 3-8, up to 20 years including the current calendar year; start miles <900K for Agriculture High Mileage Vehicles; <400K for All Other Vehicles.

## Covered Components Summary

CC = Included in Critical Components  
LOL = Limits of Liability

Coverage Exclusions: Please refer to your contract for complete list and details of covered and non-covered items.

### Engine (LOL: \$15,000 for Class 3-5; \$22,500 for Class 6-8)

#### Engine's internally lubricated hard parts include:

- Camshaft and Cam Bearings
- Cam Followers
- Connecting Rods
- Connecting Rod Bearings
- Connecting Rod Caps and Screws
- Crankshaft
- Cylinder Block Casting
- Cylinder Head
- Cylinder Head Gasket
- Cylinder Liners
- Cylinder Head Bolts
- Hydraulic Lifters
- Injector Cups
- Intake and Exhaust Valves
- Intake and Exhaust Valve Guides
- Main Bearings
- Oil Cooler and Housing
- Oil Pan
- Oil Pump Pick Up Screen
- Oil Pump Pick Up Tube\*
- Oil Pump Pressure Relief Springs and Valves
- Pistons, Piston Rings, and Piston Oil Cooling Jets
- Pushrods
- Rocker Arms and Rocker Arm Shafts
- Thrust Washers
- Timing Gears
- Timing Gear Cover and Housing
- Valve Cover
- Valve Retainers and Keepers (Locks)
- Valve Seats
- Valve Springs
- Wrist Pins

#### \*"Non-oil" related components:

- Exhaust Manifold
- Thermostat Housing
- Flywheel Housing
- Vibration Dampener
- Intake Manifold

\* For Detroit Diesels, breakdowns originating from the "oil pump pick up tube O-ring" will only be covered if the TSB D18M3 has been performed by a certified OEM repair shop.

### (CC) Turbo (LOL \$7,500)

#### Turbochargers include:

- Bearings
- Internal Variable Vane Assembly
- Turbine and Turbine Shaft
- Turbo Actuator

### Transmission

(LOL: \$6,000 for Class 3-5; \$7,500 for Class 6-8)

#### Internally lubricated hard parts of the manual or automatic transmission include:

- Bands
- Bearings
- Blockers
- Bushings
- Drums
- Gear Sets
- Governor
- Oil Pump
- Shaft(s)
- Shift Forks
- Synchronizers
- Thrust Washers
- Torque Converter
- Valve Body

### Differential

(LOL: \$6,000 for Class 3-5; \$7,500 for Class 6-8)

#### Internally lubricated hard parts include:

- Axle Housing
- Axle Shafts
- Bearings
- Bushings
- Carrier Case
- Gear Sets
- Limited Slip Clutch Pack

#### Power divider includes:

- Bearings
- Gears
- Shafts
- Shift Forks

### (CC) Engine Fuel Injectors, Water Pump, Fuel Pump & ECM

(LOL \$5,000)

#### Covered Components:

- Complete Injector
- Fuel Injector Hard Lines
- Fuel Injection Pump
- Fuel Pump
- Engine Control Module (ECM)
- Water Pump

### Progressive Damage, Wearout & Carbon Packing

Please refer to your contract for details on Progressive Damage, Wearout and Carbon Packing coverage.

### Eligibility

- Class 3-8: Start miles up to 900,000 miles (on odometer or ECM), whichever is greater, for Agriculture High Mileage Vehicles and up to 400,000 miles for All Other Vehicles
- Class 3-5 warranty expiration capped at 500,000 total miles
- Class 6-8 warranty expiration capped at 1,000,000 total miles
- Model age must be 20 years from current year or newer

### Aftertreatment, Model Year 2014 & Older (LOL: \$7,000 for Class 3-5; \$8,000 for Class 6-8)

#### Covered Components:

- Aftertreatment Electronic Control Module (ACM)
- Diesel Exhaust Fluid (DEF) Module with Injection Nozzle
- DEF Tank
- Diesel Oxidation Catalyst (DOC)
- DOC Doser Injector
- Diesel Particulate Filter (DPF)
- DPF Dosing Module
- Exhaust Gas Recirculation (EGR) Valves
- EGR Cooler(s)
- Hydrocarbon Doser Injector (HC Doser, 7th Injector, ARD, AHI Module)
- Selective Catalytic Reduction (SCR) Catalyst
- Sensor, Lambda (O<sub>2</sub> Sensor)
- Sensor, NOx (2)

### Comfort Package (LOL \$6,000)

- Alternator
- Charge Air Cooler
- Engine Air Compressor
- Fan Clutch
- Fuel Tanks, Cap, & Valve
- HVAC Air Compressor & Pulley
- HVAC Blower Motor & Resistor
- HVAC Fan Hub
- HVAC Heater Core
- HVAC Temperature Controls, Control Head, & Control Valves
- Radiator & Radiator Cap
- Radio
- Starter & Starter Solenoid

### Aftertreatment, Model Year 2015 & Newer (LOL: \$7,000 for Class 3-5; \$8,000 for Class 6-8)

#### Covered Components:

- Aftertreatment Electronic Control Module (ACM)
- Back Pressure Control Valve (BPV)
- Diesel Exhaust Fluid (DEF) Module with Injection Nozzle
- DEF Heater Control Relay
- DEF Dosing Module - Wiring Harness
- DEF Heated Lines (3)
- DEF Heater Coolant Control Valve
- DEF Heating Elements
- DEF Heating Fittings (3 on Supply Module)
- DEF Pump and Module
- DEF Solution Level/Temperature Sensor
- DEF Tank
- Diesel Oxidation Catalyst (DOC)
- Diesel Particulate Filter (DPF)
- DPF Air, Fuel, and Coolant Lines
- DPF Air, Fuel, Manifold Assembly
- DPF Dosing Module
- Exhaust Gas Recirculation (EGR) Valves
- EGR Actuator
- EGR Connecting Bellows and Clamps
- EGR Cooler(s)
- Exhaust Piping, Clamps, and Gaskets
- Exhaust Throttle Valve
- Hydrocarbon Doser Injector (HC Doser, 7th Injector, ARD, AHI Module)
- Hydrocarbon Doser Valve - Air, Fuel, and Coolant Lines; and Inline Air Filter
- Hydrocarbon Doser Valve (Voss Valve)
- Selective Catalytic Reduction (SCR) Catalyst
- SCR Decomposition Pipe and Pipe Elbows
- Sensor, BPV Pressure
- Sensor, Delta P (DPF Pressure)
- Sensor, DOC Inlet Pressure
- Sensor, DOC (Post) Temperature
- Sensor, DOC (Pre) Temperature
- Sensor, DPF Air Supply Pressure
- Sensor, DPF Back Pressure
- Sensor, DPF Fuel Pressure
- Sensor, Lambda (O<sub>2</sub> Sensor)
- Sensor, NOx (2)
- Sensor, Pressure After Exhaust Throttle Valve
- Sensor, SCR (Post) Temperature
- Sensor, SCR (Pre) Temperature
- Wiring Harness - Emission Systems (including overlay)

### Underwriting

- Continuing OEM maintenance recommendations must be followed
- Check fault codes & perform preventative maintenance
- Visual inspection of warranted components: identify leaks at seals, gaskets, and housing; verify engine performance (i.e. skips, misses, knocking, etc.)
- Road test /performance evaluation to identify performance & operational issues
- Repair identified deficiencies to maintain ROs of related underwriting repairs
- Wrap coverage begins at expiration of prior OEM coverage (by age or mileage)
- New engine oil and filter required