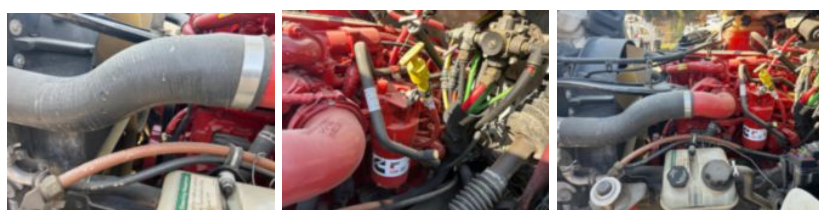
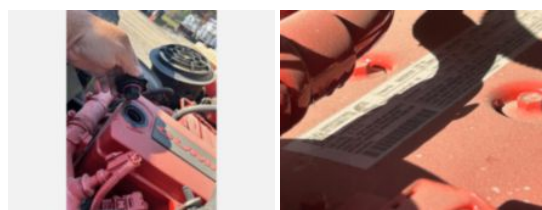


2017 Digger Derrick
Call for price

Stock HHHZ3895 VIN 1FVDCXDT6HHHZ3895



Truck Specifications		Unit Specifications	
Year	2017	Attachment Year	2005
Make	FREIGHTLINER	Attachment Make	Terex
Model	M2106	Attachment Model	Commander 4047
Color	WHITE		
Cab Type	REGULAR CAB		
Chassis Class	Truck		
Engine Make	Cummins		
Engine Model	ISB D		
Engine HP	250		
Transmission Make	Allison		
Transmission	Auto		
Transmission Speed	6		
FA Capacity	12000		
RA Capacity	21000		
Rear Axle Ratio	6.14		
Wheelbase	190		
Current Meter Reading	73910		
Block Heater	YES		
Brakes	AIR		
Fuel Tank Capacity	50		
Rear Suspension	Spring		
Engine Size	6.7		
Engine Fuel Type	Diesel		
Axle Config	4x4		
GVWR	33000		
Driver Seat	HIGH BACK AIR RIDE		
Frame	Steel		
Front Tire	11R22.5		
Rear Tire	11R22.5		
PTO Options	YES		
Radio	AM/FM		
Passenger Seat	HIGH BACK FIXED		