



Custom Truck One Source

Union Grove, WI

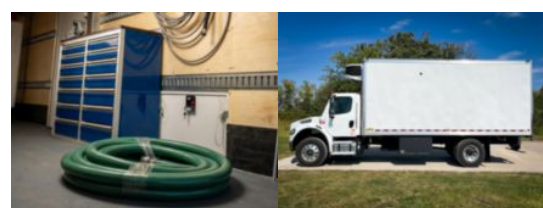
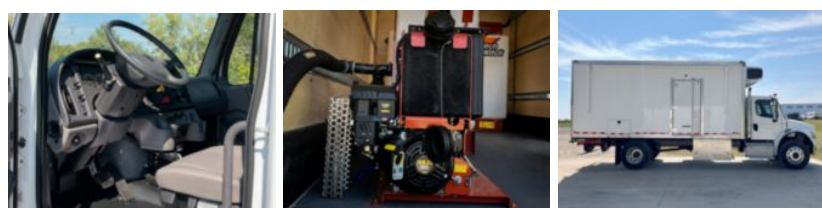
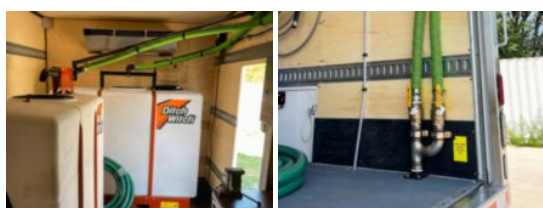
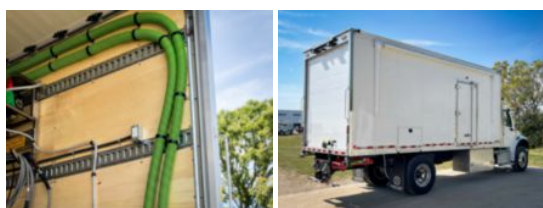
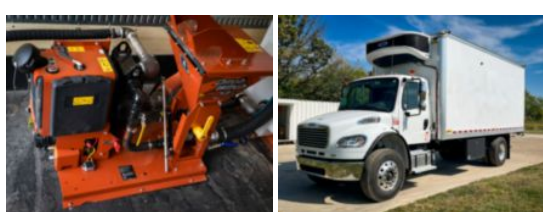
Phone: (816) 256-3200

<https://www.customtruck.com/locations>

2024 Freightliner M2106 4x2 20' Marion Van Body Bore

\$ 247,420

Stock RDUY3276 VIN 3ALACXFE9RDUY3276



Truck Specifications		Unit Specifications	
CARB Registered	No	Bed/Body Make	Marion
Year	2024	Bed/Body Model	MAR20X102VB DV-03 22' AL VAN B
Make	Freightliner		
Model	M2106		
Color	WHITE		
Cab Type	REGULAR CAB		
CA or CT	161		
Chassis Class	CLASS 7 CHASSIS		
Engine Make	CUMMINS		
Engine Model	L9 D		
Engine HP	350		
Transmission	Automatic		
Transmission Speed	6		
FA Capacity	12,000		
RA Capacity	21,000		
Rear Axle Ratio	5.57		
Wheelbase	226		
Current Meter Reading (mi)	534		
Engine Hours (hr)	20		
Approximate Bare Weight (lb)	11,300		
Block Heater	1000W/115V		
Brakes	AIR		
Fuel Tank Capacity (gal)	50		
Rear Suspension	SPRING		
Engine Size	L9 D		
Engine Fuel Type	Diesel		
Axle Config	4x2		
Diesel Exhaust Fluid Tank	6		
GVWR (lb)	33,000		
Driver Seat	HIGH BACK AIR RIDE		
Frame	SINGLE		
Front Tire	02 HK H 11R22.5 AL11 050.56		
Rear Tire	04 HK G 11R22.5 DH06 088.45		
Power Locks	YES		
Front Axle Location	SBFA - SET BACK FRONT AXLE		
PTO Options	PROVISION		
Radio	AM/FM/WB/USB/BLUETOOTH		
Power Windows	DRIVER AND PASSENGER		
Passenger Seat	HIGH BACK FIXED		

DISCLAIMER: Price quoted includes any applicable FET. Quoted price is Ex Works and does not include any freight / delivery charges, sales tax, titling fees, or registration fees. Specifications are believed to be correct but may contain errors and/or omissions. Pictures are representative and may not be identical. Description and Images Custom Truck One Source