



Custom Truck One Source

Kansas City, MO

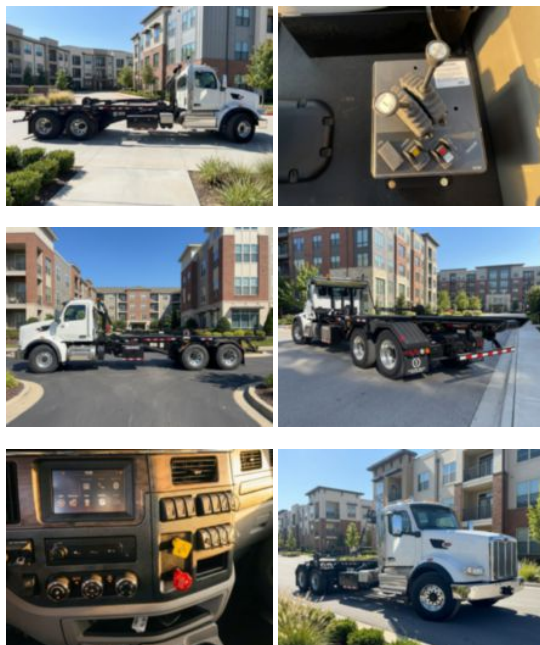
Phone: (816) 256-3200

<https://www.customtruck.com/locations>

2025 Peterbilt 567 6x4 Galbreath U5-OR-174 Roll-Off Truck

\$ 260,945

Stock SD714415 VIN 1NPCL40X7SD714415



Truck Specifications		Unit Specifications	
CARB Registered	No	Attachment Make	Galbreath
Year	2025	Attachment Model	U5-OR-174
Make	Peterbilt	Rolloff Capacity (lb)	60000
Model	567	Roll Off Maximum Container Length (ft)	22
Cab Type	REGULAR CAB	Roll Off Minimum Container Length (ft)	18
CA or CT	192		
Chassis Class	CLASS 8 CHASSIS		
Engine Make	CUMMINS		
Engine Model	X15 D		
Engine HP	450		
Transmission	Automatic		
Transmission Speed	6		
FA Capacity	20,000		
RA Capacity	46,000		
Wheelbase	266		
Brakes	AIR DISC		
Rear Suspension	HMXEX460		
Engine Size	14.9		
Engine Fuel Type	Diesel		
Axle Config	6x4		
GVWR (lb)	33001+		
Frame	DOUBLE		
PTO Options	YES		

DISCLAIMER: Price quoted includes any applicable FET. Quoted price is Ex Works and does not include any freight / delivery charges, sales tax, titling fees, or registration fees. Specifications are believed to be correct but may contain errors and/or omissions. Pictures are representative and may not be identical. Description and Images Custom Truck One Source