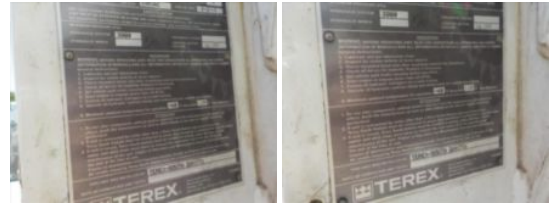


2018 Terex TM-125 Bucket/2019 Peterbilt 567 Tri-Drive

\$ 225,000

Stock KD602581 VIN 1NPCXJEX7KD602581



Truck Specifications		Unit Specifications	
Year	2019	Attachment Make	Terex
Make	PETERBILT	Attachment Model	TM125
Model	567		
Chassis Class	Truck		
Engine Make	Paccar		
Engine Model	PX9 8.9L		
Engine HP	370		
Transmission Make	Allison		
Transmission	Auto		
Transmission Speed	6		
FA Capacity	20000		
RA Capacity	66000		
Rear Axle Ratio	5.38		
Wheelbase	287		
Current Meter Reading	20696		
Fuel Tank Capacity	80		
Rear Suspension	Air Ride		
Engine Fuel Type	Diesel		
GVWR	80000		
Frame	Steel		