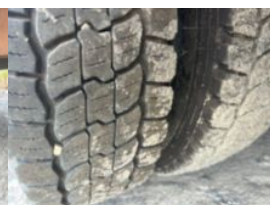
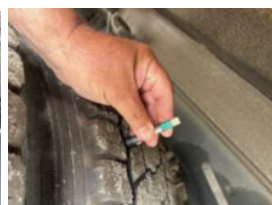
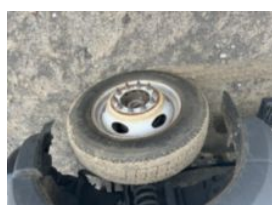


2011 Versalift SST-37-EIH / 2019 Ford F550 4x4 Bucket
Call for price

Stock KED96138 VIN 1FDUF5HYXKED96138



Truck Specifications		Unit Specifications	
Year	2019	Attachment Year	2011
Make	FORD	Attachment Make	Versalift
Model	F550	Attachment Model	SST-38
Cab Type	REGULAR CAB		
CA or CT	84		
Chassis Class	Truck		
Engine Make	Ford		
Engine Model	6.8 V10		
Engine HP	288		
Transmission Make	Ford		
Transmission	Auto		
Transmission Speed	6		
FA Capacity	7,500		
RA Capacity	14,706		
Wheelbase	169		
Current Meter Reading	112,271		
Brakes	HYDRAULIC		
Fuel Tank Capacity	35		
Rear Suspension	Spring		
Engine Size	6.8		
Engine Fuel Type	Gasoline		
Axle Config	4x4		
GVWR	19,500		
Frame	Steel		
Front Tire	225/70R19.5		
Rear Tire	225/70R19.5		
PTO Options	YES		