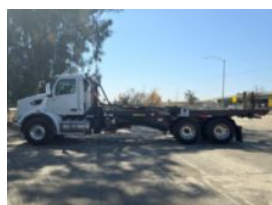


2025 Peterbilt 567 6x4 Spartan SRO60SC Roll-Off Truck

\$ 279,538

Stock SD720207 VIN 1NPCLP0X6SD720207



Truck Specifications		Unit Specifications	
CARB Registered	Yes	Attachment Year	2024
Year	2025	Attachment Make	Spartan
Make	Peterbilt	Attachment Model	SRO60SC
Model	567		
Cab Type	REGULAR CAB		
CA or CT	192		
Chassis Class	CLASS 8 CHASSIS		
Engine Make	PACCAR		
Engine Model	MX-13 D		
Engine HP	510		
Transmission	Automatic		
Transmission Speed	6		
FA Capacity	20000		
RA Capacity	46000		
Wheelbase	260		
Brakes	AIR		
Rear Suspension	HMXEX460		
Engine Size	13		
Engine Fuel Type	Diesel		
Axle Config	6x4		
GVWR	33001+		
Frame	10750350375I		
PTO Options	YES		