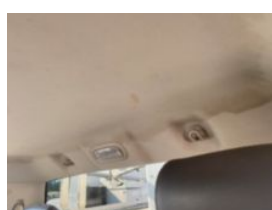
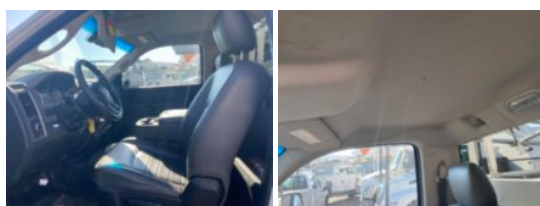


2017 Dodge 4500 4x2 Gas ETI ETC-35SNT Bucket Truck
Call for price

Stock HG654060 VIN 3C7WRKAJ2HG654060



Truck Specifications		Unit Specifications	
Year	2017	Attachment Year	2017
Make	RAM	Attachment Make	ETI
Model	4500	Attachment Model	ETC35SNT
Cab Type	REGULAR CAB		
CA or CT	60		
Chassis Class	Truck		
Engine Make	Dodge		
Engine Model	6.4L V8 HEMI		
Engine HP	410		
Transmission Make	Aisin		
Transmission	Auto		
Transmission Speed	6		
FA Capacity	6,000		
RA Capacity	12,000		
Rear Axle Ratio	4.44		
Wheelbase	145		
Current Meter Reading	70,099		
Brakes	HYDRAULIC		
Fuel Tank Capacity	52		
Rear Suspension	Spring		
Engine Size	6.4		
Engine Fuel Type	Gasoline		
Axle Config	4x2		
GVWR	16,500		
Driver Seat	HIGH BACK		
Frame	Aluminum		
Front Tire	225/70R19.5		
Rear Tire	225/70R19.5		
PTO Options	YES		
Radio	AM/FM		
Passenger Seat	HIGH BACK		