



2019 Freightliner M2106 6x6 Terex General 65 Digger Derrick

Equipment# 221044

CHASSIS SPECS

UNIT INFORMATION

VIN: 1FVKCYFE0KHKC8196

Miles: 29,441

Tandem Axle

Air Brakes

Double Frame

Pintle Hitch

W/ Air & Electric

CAB FEATURES

Standard Daycab

Power Windows

Power Door Locks

Aerodynamic Mirrors

Air & City Horns

INTERIOR FEATURES

Mid-Level Interior

A/C Equipped

High Back Air Ride

Drivers Seat

Mid Back Fixed

2-Passenger Bench Seat

AM/FM/AUX/USB

Bluetooth

Tilt Steering Column

Cruise Control

EQUIPMENT SPECS

2019 Terex General 65

S/N: 2190366544

16,500 Lb. Capacity @ 10 Ft.

65 Ft. Sheave Height

55 Ft. Horizontal Reach

36.4 Ft. Digging Radius

Turret Mount Winch

360 Degree Continuous

Pole Claws

Insulated 46KVAC Category C

Front & Rear Radial Outriggers

Lower Hydraulic Tool Circuit

Dakota Bodies

Model: DK66545

S/N: DB37260

LH (1) Cabinet

RH (1) Cabinet

GVWR

58,000 Lbs.

FRONT AXLE

18,000 Lb. FAWR

REAR AXLE(S)

40,000 Lb. RAWR

6.14 Ratio

Diff. Lock

REAR SUSPENSION

Hendrickson RT403

ENGINE

Cummins L9

350 Horsepower

S/N: 74380035

Hours: 2,169

Block Heater

RH Vertical Exhaust

TRANSMISSION

Allison 3000 RDS

TIRES/WHEELS

Front Tires: 385/65R22.5

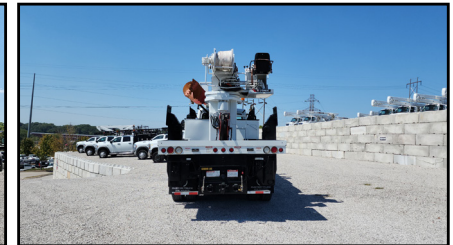
Front Wheels: Aluminum

Rear Tires: 11R22.5

Rear Wheels: Aluminum

FUEL TANK(S)

LH 50 Gallon Aluminum



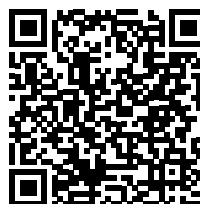
**Unit Being Sold AS-IS/WHERE-IS
Qualifies For An Extended Warranty
See Pages 2-3 For Warranty Info.**

888-684-8146

www.customtruck.com

ASK ABOUT THE CUSTOMIZED AND FLEXIBLE LEASING & FINANCING SOLUTIONS AVAILABLE FROM CUSTOM TRUCK CAPITAL
DISCLAIMER: Specifications are believed to be correct, but may contain errors and/or omissions. Pictures are representative and may not be identical.

Click / Scan For Info



PRICE: \$285,500

STOCK#: KHKC8196

EX WORKS: Kansas City, MO

QUOTE NUMBER: AD2.05-I_24 Tier A

EXPIRATION DATE: 06/30/2025



Specialty Truck Warranty with Rear Apparatus

Each Warranty Program Includes:

Engine, Critical Components (turbos, fuel injectors, fuel pump, water pump, ECM), Transmission and Rear Differential. Rear Apparatus coverage includes: Electrical and Hydraulic System.

TRUCKS FROM RENTAL FLEET

24 Months / 50,000 Miles	Class 3-5	Class 6-8
Single-axle boom / bucket trucks, with no swing cab	\$5,075	\$6,000
Tandem-axle boom / bucket trucks and digger derricks	N/A	\$7,000
All units with swing cabs (riding units)	N/A	\$8,000

\$350 deductible per occurrence

Additional coverage options

Aftertreatment

24 Months **\$1,250**

Comfort Package

24 Months **\$950**

See contract for all details. See back for coverage summary. All costs are in US dollars.



Specialty Truck Warranty with Rear Apparatus

Covered Components Summary

CC = Included in Critical Components
 LOL = Limits of Liability

Coverage Exclusions: Please refer to your contract for complete list and details of covered and non-covered items.

Engine (LOL: \$15,000 for Class 3-5; \$22,500 for Class 6-8)

Engine's internally lubricated hard parts include:

- Camshaft and Cam Bearings
- Cam Followers
- Connecting Rods
- Connecting Rod Bearings
- Connecting Rod Caps and Screws
- Crankshaft
- Cylinder Block Casting
- Cylinder Head
- Cylinder Head Gasket
- Cylinder Liners
- Cylinder Head Bolts
- Hydraulic Lifters
- Injector Cups
- Intake and Exhaust Valves
- Intake and Exhaust Valve Guides
- Main Bearings
- Oil Cooler and Housing
- Oil Pan
- Oil Pump Pick Up Screen
- Oil Pump Pick Up Tube*
- Oil Pump Pressure Relief Springs and Valves
- Pistons, Piston Rings, and Piston Oil Cooling Jets
- Power Take Off (PTO)
- Pushrods
- Rocker Arms and Rocker Arm Shafts
- Thrust Washers
- Timing Gears
- Timing Gear Cover and Housing
- Valve Cover
- Valve Retainers and Keepers (Locks)
- Valve Seats
- Valve Springs
- Wrist Pins

"Non-oil" related components:

- Exhaust Manifold
- Flywheel Housing
- Intake Manifold
- Thermostat Housing
- Vibration Dampener

* For Detroit Diesels, breakdowns originating from the "oil pump pick up tube O-ring" will only be covered if the TSB D18M3 has been performed by a certified OEM repair shop.

(CC) Engine Fuel Injectors, Water Pump, Fuel Pump & ECM (LOL \$5,000)

Covered Components:

- Complete Injector
- Fuel Injector Hard Lines
- Fuel Injection Pump
- Fuel Pump
- Engine Control Module (ECM)
- Water Pump

(CC) Turbo (LOL \$7,500)

Turbochargers include:

- Bearings
- Internal Variable Vane Assembly
- Turbine and Turbine Shaft
- Turbo Actuator

Transmission (LOL: \$6,000 for Class 3-5; \$7,500 for Class 6-8)

Internally lubricated hard parts of the manual or automatic transmission include:

- | | |
|-------------|--------------------|
| • Bands | • Oil Pump |
| • Bearings | • Shaft(s) |
| • Blockers | • Shift Forks |
| • Bushings | • Synchronizers |
| • Drums | • Thrust Washers |
| • Gear Sets | • Torque Converter |
| • Governor | • Valve Body |

Differential (LOL: \$6,000 for Class 3-5; \$7,500 for Class 6-8)

Internally lubricated hard parts include:

- | | |
|----------------------------|---------------|
| • Axle Housing | • Bearings |
| • Axle Shafts | • Gears |
| • Bearings | • Shafts |
| • Bushings | • Shift Forks |
| • Carrier Case | |
| • Gear Sets | |
| • Limited Slip Clutch Pack | |

Model Year 2014 & Older Aftertreatment (LOL: \$7,000 for Class 3-5; \$8,000 for Class 6-8)

Covered Components:

- Aftertreatment Electronic Control Module (ACM)
- Diesel Exhaust Fluid (DEF) Module with Injection Nozzle
- DEF Tank
- Diesel Oxidation Catalyst (DOC)
- DOC Doser Injector
- Diesel Particulate Filter (DPF)
- DPF Dosing Module
- Exhaust Gas Recirculation (EGR) Valves
- EGR Cooler(s)
- Hydrocarbon Doser Injector (HC Doser, 7th Injector, ARD, AHI Module)
- Selective Catalytic Reduction (SCR) Catalyst
- Sensor, Lambda (O₂ Sensor)
- Sensor, NOx (2)

Model Year 2015 & Newer Aftertreatment (LOL: \$7,000 for Class 3-5; \$8,000 for Class 6-8)

Includes all 2014 Covered Components plus:

- Back Pressure Control Valve (BPV)
- DEF Heater Control Relay
- DEF Dosing Module - Wiring Harness
- DEF Heated Lines (3)
- DEF Heater Coolant Control Valve
- DEF Heating Elements
- DEF Heating Fittings (3 on Supply Module)
- DEF Pump and Module
- DEF Solution Level/Temperature Sensor
- Diesel Particulate Filter (DPF)
- DPF Air, Fuel, and Coolant Lines
- DPF Air, Fuel, Manifold Assembly
- EGR Actuator
- EGR Connecting Bellows and Clamps
- Exhaust Piping, Clamps, and Gaskets
- Exhaust Throttle Valve
- Hydrocarbon Doser Valve - Air, Fuel, and Coolant Lines; and Inline Air Filter
- Hydrocarbon Doser Valve (Voss Valve)
- SCR Decomposition Pipe and Pipe Elbows
- Sensor, BPV Pressure
- Sensor, Delta P (DPF Pressure)
- Sensor, DOC Inlet Pressure
- Sensor, DOC (Post) Temperature
- Sensor, DOC (Pre) Temperature
- Sensor, DPF Air Supply Pressure
- Sensor, DPF Backpressure
- Sensor, DPF Fuel Pressure
- Sensor, Pressure After Exhaust Throttle Valve
- Sensor, SCR (Post) Temperature
- Sensor, SCR (Pre) Temperature
- Wiring Harness - Emission Systems (including overlay)

Comfort Package (LOL \$6,000)

- Charge Air Cooler
- Radiator & Radiator Cap
- Fan Clutch
- Engine Air Compressor
- Alternator
- Starter & Starter Solenoid
- Engine Brake
- Fuel Tanks, Cap, & Valve
- Radio
- HVAC Blower Motor & Resister
- HVAC Temperature Controls, Control Head, & Control Valves
- HVAC Air Compressor & Pulley
- HVAC Fan Hub
- HVAC Heater Core

Apparatus Coverage

(LOL: Single Axle \$15,000; Tandem Axle/Swing Cabs \$20,000)

Electrical Components

- Electrical Motors
- Electrical Joysticks
- Factory Installed Electronic Controllers
- Engine Air Compressor
- Gauges
- Indicators
- Instruments
- Rotary Electric Motors
- Sensors
- Solenoid Valves
- Switches
- Wiring Harness

Hydraulic System

- Actuators, Controllers & Sensor (Hydraulic Function ONLY)
- Hydraulic Cylinders
- Hydraulic Motors
- Hydraulic Oil Filter Base
- Hydraulic Oil Coolers
- Hydraulic Pump
- Hydraulic Swivel
- Hydraulic Valve
- PTO Pump

Eligibility

- Class 3-8: Start miles up to 900,000 miles (on odometer or ECM), whichever is greater, for Agriculture High Mileage Vehicles and up to 400,000 miles for All Other Vehicles
- Class 3-5 warranty expiration capped at 500,000 total miles
- Class 6-8 warranty expiration capped at 1,000,000 total miles
- Model age must be 20 years from current year or newer

Progressive Damage, Wearout & Carbon Packing

Please refer to your contract for details on Progressive Damage, Wearout and Carbon Packing coverage.

Underwriting

- New engine oil and filter required
- Check fault codes & perform preventative maintenance
- Continuing OEM maintenance recommendations must be followed
- Road test /performance evaluation to identify performance & operational issues
- Wrap coverage begins at expiration of prior OEM coverage (by age or mileage)
- Visual inspection of warrantied components: identify leaks at seals, gaskets, and housing; verify engine performance i.e. skips, misses, knocking, etc.
- Repair identified deficiencies to maintain RO's of related underwriting repairs