

RS20/RS26 Reel Stand



Important Safety Notice

Before using a Condux Tesmec RS20/RS26 Reel Stand, operators must read and understand all procedures and safety instructions. Note all safety information on this page, and note specific safety requirements as explained by the procedures in this manual.

Failure to follow these instructions could result in serious personal injury or death.

ADVERTENCIA:

Favor de leer y comprender todas las instrucciones de operación y seguridad antes de usar la máquina. Si Ud. No comprende las instrucciones favor de consultarle a su jefe.



Save this user's guide for future reference.

COMMUNICATION WITH THE MANUFACTURER:

For information related to the machine (use, maintenance, spare parts), always state the Model Number, Serial Number, Manufacturing Year, and Order Number. This information can be found in the Parts-Identification Table.

Manufacturer:
Condux Tesmec, Inc.
145 Kingswood Drive, Suite 1
Mankato, MN 56002-0668
1-507-387-6576
Fax 1-507-387-3855
E-mail: info@conduxtesmec.com



For questions on:
SAFETY - OPERATIONS - APPLICATIONS
CALL 1-877-854-1750

Table of Contents

IMPORTANT SAFETY NOTICE	2	6 PARTS	14-31
COMMUNICATION WITH THE MANUFACTURER	2	A. REPLACEMENT LABELS	14-15
1 GENERAL INFORMATION	4	B. RS20 REEL STAND ASSY.....	16-17
A. PRODUCT DESCRIPTION.....	4	C. RS26 REEL STAND ASSY.....	18-19
B. SAFETY INFORMATION.....	4	D. CHAIN DRIVE DETAIL	20-23
C. OPERATOR INFORMATION	4	E. HYDRAULIC DRIVE DETAIL	24-27
D. GENERAL MAINTENANCE INFORMATION	4	F. HYDRAULIC HAND PUMP.....	28-31
E. MACHINE USAGE.....	5	G. HYDRAULIC CONTROL VALVE.....	32-33
F. RESPONSIBILITY	5	H. CHAIN GUARD.....	34-35
G. OPERATORS MANUAL.....	5	I. HOSE RACK/GROUND ATTACHMENT.....	36-37
2 TECHNICAL SPECIFICATIONS.....	6	J. HYDRAULIC HOSE DETAIL.....	38
3 SAFETY CONDITIONS.....	6	K. CONTROL VALVE DETAIL.....	39
A. SAFETY DEVICES.....	6	7 NOTES.....	30-31
B. PERIODIC OPERATIONS.....	6		
C. CAUTIONS & WARNINGS.....	7		
D. PULLING ROPE FAILURE	7		
E. ROTATING COMPONENT, PINCH-POINT HAZARDS..	7		
F. CRUSHING INJURY WHEN LOADING OR UNLOADING ROPE OR CONDUCTOR REELS.....	7		
G. ELECTROSTATIC DISCHARGES.....	7		
H. INHALATION ENGINE EXHAUSTING GAS.....	7		
4 TRANSPORTING	8		
A. MACHINE LIFTING.....	8		
B. PACKING FOR SHIPMENT.....	8		
C. UNPACKING.....	8		
D. TOWING.....	8		
5 OPERATING PROCEDURES.....	8		
A. INITIAL SET-UP	8		
B. REEL INSTALLATION	10		

General Information

1.

A. PRODUCT DESCRIPTION

The RS20 Reel Stand provides up to 20,000 lbs of load capacity. The RS26 Provides up to 26,000lbs of load cpacity. both come equipped with a hydraulic negative brake, reel arbor bar and hose storage.

B. SAFETY INFORMATION

- Only trained and qualified operators should use this machine.
- Qualified operators are those persons who have received training from the machine owner's company or, alternatively, from the manufacturer.
- This machine must be used only for the work it was designed for.
- This machine should not be used with unauthorized personnel on the work site.
- For any questions regarding operation, function, maintenance, etc., contact the After-Sales Service of the manufacturer.

C. OPERATOR INFORMATION

- Operators must be aware of all local, state and federal safety regulations governing the use of this equipment.
- Operators must wear suitable clothing to reduce the possibility of entanglement in the machine's moving parts. They should avoid the wearing of chains, and other jewelry for the same reason.
- Operators must use personnel protective gear (i.e. gloves, boots, helmet, etc.).
- Operators must carefully follow hazard related instructions contained in this instruction manual or indicated on the machine.
- This machine's work area should be free as possible of oil or other liquid spills as well as materials or equipment that may be considered as an obstacle to proper operation.

D. GENERAL MAINTENANCE INFORMATION

- It is absolutely forbidden to carry out any maintenance, or adjust any settings on this machine while pulling (except for those indicated in this manual).
- Before carrying out any maintenance stop the machine (except for those instances indicated otherwise in this manual) and wait till the system components subject to heating have cooled sufficiently.
- All the maintenance performed on this machine must be carried out on a level surface and while the system is not under load.
- Authorized and trained personnel must perform all of the maintenance, both scheduled maintenance and repair.
- Authorized and trained personnel are those persons who have received training on the maintenance of this equipment from the machine owner's company or, as alternative, from the manufacturer.

- Maintenance personnel must wear suitable clothes to reduce the possibility of entanglement in the machine's moving parts. They should avoid the wearing of chains, and other jewelry for the same reason. Operators must use personal protective gear (i.e. gloves, boots, helmet, etc.).
- All maintenance operations, both scheduled and repair must be carried out per the instructions included in this manual or following technical instructions provided by the manufacturer. Failure to follow these instructions relieves the manufacturer from any responsibility and voids their warranty.

E. MACHINE USAGE

- The machine must not be used for the following:
 - For lifting person and/or goods.
 - For tensioning or pulling.
 - In a location where the machine cannot be positioned and anchored in a proper way.
 - In areas with brush or other materials that can be easily set on fire.
 - In closed/unventilated sites or those poorly ventilated (tunnel or similar).
 - At sites where fuels or explosives are present.
 - For structure demolition.
 - For the pulling of elastic elements.
 - With over-ridden or broken safety system devices.
 - For handling trucks or other movable equipment.

F. RESPONSIBILITY

Use of the reel stand in situations different from those indicated (Typology and using field), or not described in this manual, is to be considered extremely dangerous and/or forbidden. Persons not using recommended restraints cause a situation of improper use, and relieve the manufacturer from any responsibility for accidents, injuries to persons or damage to property. The manufacturer's warranty is also voided. Similarly the manufacturer's responsibility ends when the following situations occur:

- Tampering and/or modifying of the system without the manufacturer's written acceptance (in this case the operator becomes the manufacturer assuming all obligations and responsibilities, both civil and penal).
- The use of non-original spare parts.
- Poor maintenance.
- Use with disconnected or over-ridden safety devices.
- For the connection to machine and/or plans not produced and not directly authorized by the manufacturer in a written acceptance.

G. OPERATORS MANUAL

- Information contained in this manual applies to all the operators charged with the use and/or the maintenance of this machine

- This instruction manual is not a training manual
- Before using the machine the job site supervisor and the operators must read this instruction manual.
- All operators user must carefully follow the instructions contained in this manual
- Before using the machine the operator must know the positions and the operation of all controls.
- The job site supervisor must verify that the instructions contained in this manual are applied.
- This instruction manual must be kept with the machine, for the entire life of the machine, so it is available to all potential users and operators.
- The instruction manual must be kept in a sheltered and dry place.

Technical Specifications

2.

The Condux Tesmec RS20/RS26 Reel Stands were developed for paying in or out conductor reels when used in conjunction with Condux Tesmec Puller-Tensioners and Tensioners. Industry leading features like Self Acting Hydraulic Brake and Advanced Hydraulic

General Specifications	RS20	RS26
Reel OD Capacity	102 inches	102 inches
Reel Width Capacity	70 inches	72 inches
Weight Capacity	20,000 lbs	26,000 lbs
Total Weight (Skid Mounted)	2,600 lbs	2,600 lbs

Systems.

3.

Safety Information

A. SAFETY DEVICES

Machine has been equipped with the following safety devices:

- A mechanical negative safety brake that stops all movement if hydraulic pressure is lost.
- Where possible, guards and covers are provided to protect personnel from the moving parts.



!DANGER: It is absolutely forbidden to use this machine with protective guards removed or with damaged or disconnected safety devices.

B. PERIODIC OPERATIONS



Proper functioning of safety systems should be verified daily.

!CAUTION: Any customer alterations to the provided safety devices relieves the manufacturer of any responsibility for any resulting damage of property or injury to personnel.

C. CAUTIONS & WARNINGS

When operating this machine users must be aware of other risks associated with the work for which the machine is intended.

D. PULLING ROPE FAILURE

Obviously this will cause uncontrolled movement of the entire machine. Both this and the danger then presented by the pulling rope and/or conductor can cause serious injury or death.

To reduce operator exposure to these dangers owners must:

- Regularly check the rope and replace it as soon as defects or signs of wear are detected.
- Assume only the recommended operation positions indicated in this manual.

E. ROTATING COMPONENT, PINCH-POINT HAZARDS

Due to the nature of the work being performed and important system functionality, it is possible to fully guard all rotating components. To minimize risks operators must:

- Avoid any contact with the machine's rotating components.
- Follow the anchoring instructions described in this manual.
- Follow all recommendations in this manual regarding the use of personal safety equipment.

F. CRUSHING INJURY WHEN LOADING OR UNLOADING ROPE OR CONDUCTOR REELS

Operators must know the proper methods for executing these tasks and should be trained to do them properly.

G. ELECTROSTATIC DISCHARGES

To reduce the risk presented by static electric charge build up in the ropes and conductors during pulling operations, the machine must be properly grounded. To minimize these risks operators must:

- Be trained in, and apply, the proper methods used to ground the machine before using the machine.

H. INHALATION ENGINE EXHAUSTING GAS

To minimize these risks operators must:

- Assume the proper operating position during operation and use appropriate safety equipment as needed.

Transporting

4.

A. MACHINE LIFTING

For machine lifting use only devices (overhead traveling cranes, lift trucks, ropes, cables, hooks, etc.) with a capacity equal to the weight to be lifted. Personnel should not be on the machine when it is lifted.



!DANGER: Failure to follow the recommendations in this section may create a dangerous situation and/or damage to the machine. The manufacturer's warranty may also become void as a result.

B. PACKAGING FOR SHIPMENT

Transport by land or truck. Certain surfaces may be protected by cardboard and/or plywood and/or polyethylene film. To prevent movement, use nailed wheel chocks. Attach the machine to the floor of a truck box or trailer using chains and hooks at the attachment points provided.

C. UNPACKING

When receiving the machine verify the condition of the package; immediately notify the transportation company and the manufacturer (use photos whenever possible) of any damage that may have occurred during shipment. Verify that the supplied product matches that which was ordered; immediately advise the manufacturer if there is a discrepancy. Use caution when unpacking to avoid damaging the product.



!CAUTION: Disposal of all packaging materials must be in accordance with local regulations.

D. TOWING

This machine is designed for towing at highway speeds. No personnel may ride on the machine at any time while towing the machine at ANY speed.



!CAUTION: Always make sure to hook safety chains, attach lights & safety brake to transporting vehicle before towing machine.

Operating Procedures

5.



!WARNING: the "Freewheel" mode is to be used only for positioning the reel/drum for loading and unloading. the reel stands are designed to slowly bleed off pressure from the negative brake for safety reasons. Using the freewheel mode for extended rotations of the reel/drum can result in damage to the negative brake and motor.

It is essential that the RS20 or RS26 are properly set up before operation. Using the following procedure will allow the unit to be set up in a short period of time and yield optimum performance.

A. INITIAL SET-UP

1. Locate RS20 or RS26 Reel Stand at least 20-30 feet behind the stringing equipment as the site allows

2. Securely anchor using the anchor points provided (Figure 1)
3. Properly ground the reel stand using the grounding connections provided (Figure 2)
4. Connect the hydraulic hoses to the stringing machine (Figure 3)
5. Secure the area between the stringing equipment and this reel stand to limit personnel entry.



Figure 1. Anchoring Bracket



Figure 2. Grounding Lug

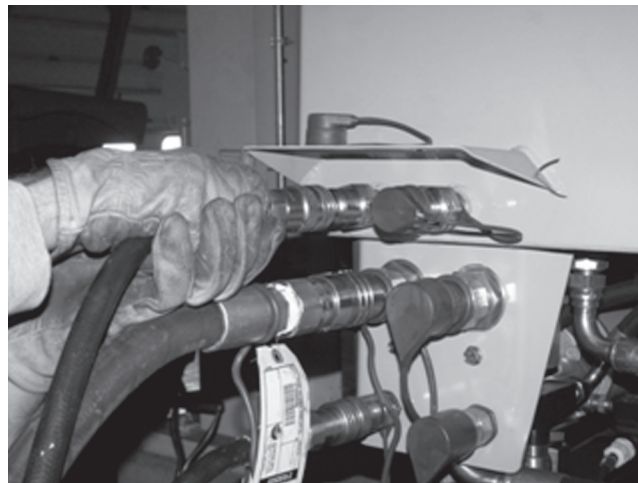


Figure 3. Connecting Hydraulic Hoses

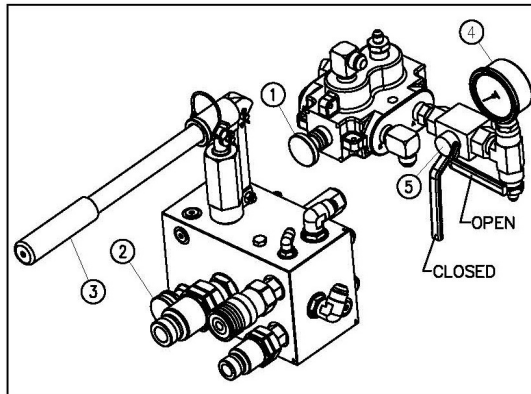
B. REEL INSTALLATION

REEL BRAKE OPERATING INSTRUCTIONS

-WARNING-

DO NOT RELEASE THE BRAKE WITHOUT PROPERLY SECURING THE ROPE OR CABLE

1. INSURE THAT THE HYDRAULIC SUPPLY FROM THE STRINGING EQUIPMENT IS TURNED OFF OR DISCONNECTED.
2. PUSH THE SELECTOR VALVE HANDLE (ITEM 1) IN.
3. CLOSE THE VALVE (ITEM 2) BY TURNING THE KNOB CLOCKWISE UNTIL IT STOPS OR BOTTOMS OUT.
4. OPEN BALL VALVE (ITEM 5), SHOWN IN OPEN POSITION.
5. OPERATE THE PUMP HANDLE (ITEM 3) UNTIL THE PRESSURE ON GAUGE (ITEM 4) IS APPROXIMATELY 450 PSI. USE CAUTION AS THE BRAKE BEGINS TO RELEASE. AN UNBALANCED LOAD WILL CAUSE THE REEL TO TURN.
6. ROTATE THE REEL UNTIL THE "UP" LABEL ON THE DRIVE BAR IS IN THE 12 O'CLOCK POSITION. WHEN THE REEL IS IN THIS POSITION, TURN VALVE (ITEM 2) COUNTER CLOCKWISE A FEW TURNS TO RE-APPLY THE BRAKE. PRESSURE ON GAUGE (ITEM 4) WILL BE ZERO.
7. PULL OUT THE SELECTOR VALVE KNOB (ITEM 1), TURN VALVE (ITEM 2) COMPLETELY IN (CLOCKWISE) UNTIL IT STOPS, AND CLOSE BALL VALVE (ITEM 5).
8. REPLACE THE REEL AND RESUME STRINGING OPERATIONS.



21032542 REV3

1. Ensure that the hydraulic supply from the stringing equipment is shut-off
2. Push in the selector valve handle (Figure 4)
3. Close the valve (clockwise) on the pump (Figure 5)



Figure 4. Push in Selector Valve Handle

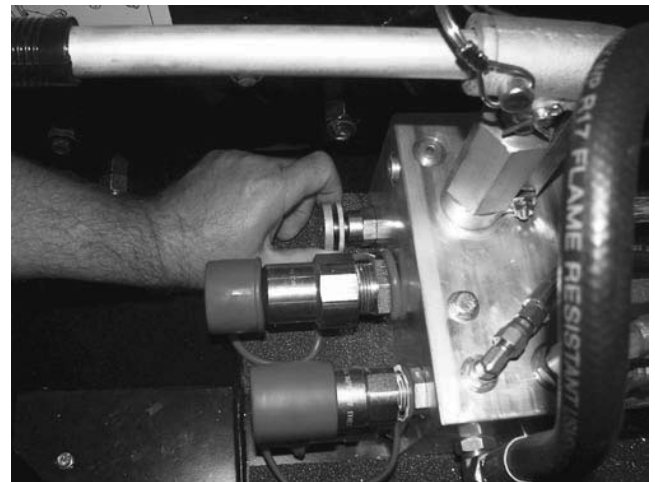


Figure 5. Close Valve on Pump

4. Open the Ball Valve (in line with) as shown (see Figure 6)
5. Operate the pump handle until the pressure on the gauge reads approximately 450 PSI. Use caution as the brake begins to release as the arbor bar will begin to rotate. (Figure 7)

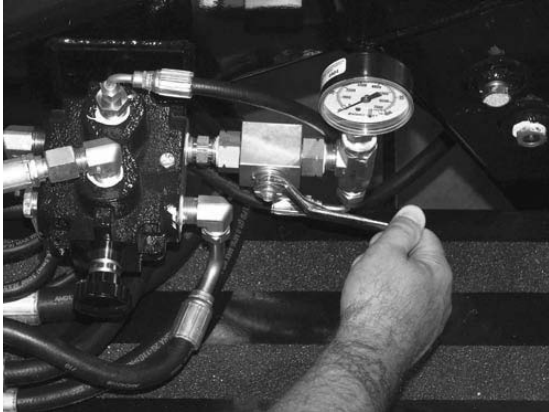


Figure 6. Open Ball Valve

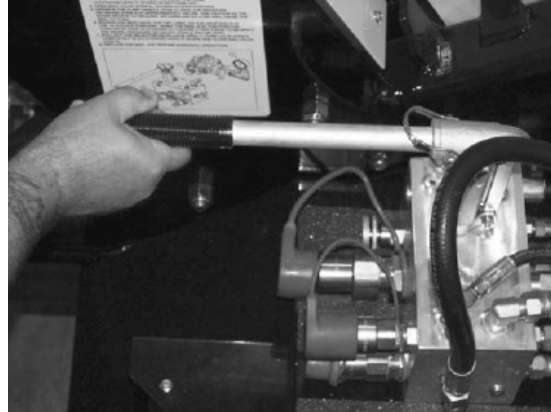


Figure 7. Pump Handle until Gauge Reads 450 PSI

6. Disengage drive side pin by removing keeper pin and pulling out the drive pin. (Figure 7 & 8)



Figure 7. Remove Keeper Pin from Drive Pin

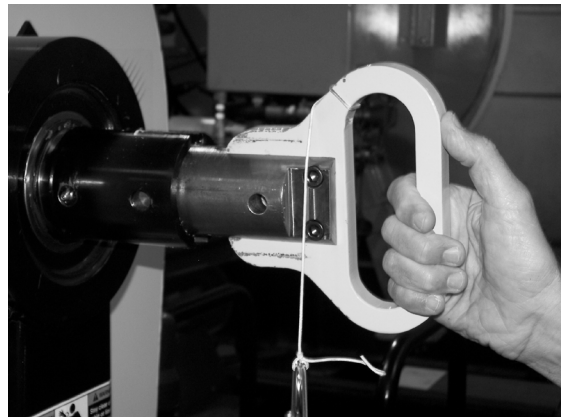


Figure 8. Pull Out Drive Pin

7. Remove bearing retainer pin and lift hinged keeper to fully open position. (Figure 9 & 10)



Figure 9. Remove Retainer Pin from Bearing Keeper



Figure 10. Open Bearing Keeper to Fully Open Position

8. Repeat number 6 on other side.
9. Remove arbor bar.
10. Remove bearing from arbor bar. (Figure 11)
11. Remove Lifting Bracket using a 1-1/8" wrench (Figure 12)
12. Install Arbor Bar through the reel hole ensuring drive pins engage drive holes (Figure 14).



Figure 11. Remove Bearing



Figure 12. Remove Lifting Bracket



Figure 13. Install Arbor Bar

13. Reverse steps 9 through 11 to install components back onto arbor bar.
14. Once arbor has been secured to the reel, lift the reel utilizing the lifting brackets and install onto reel stand. (Figure 14)
15. Reference operational label located on the reel stand for brake release.

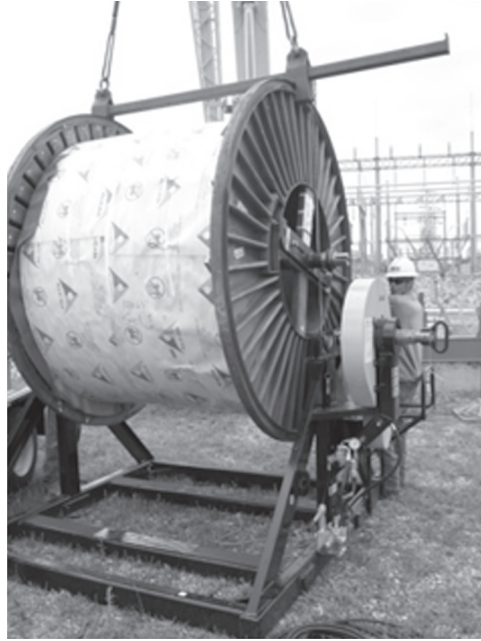
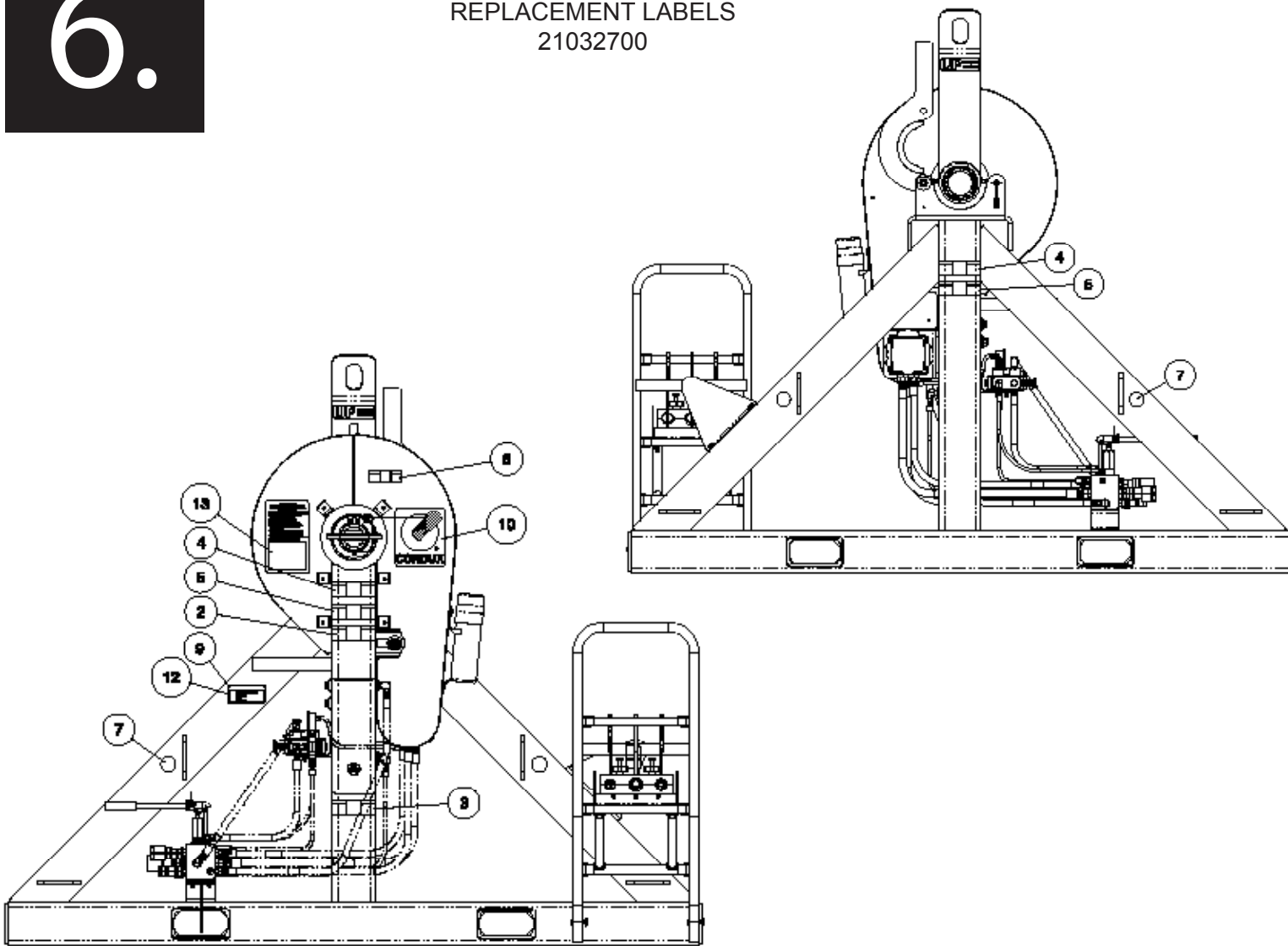


Figure 14. Load Reel

Parts

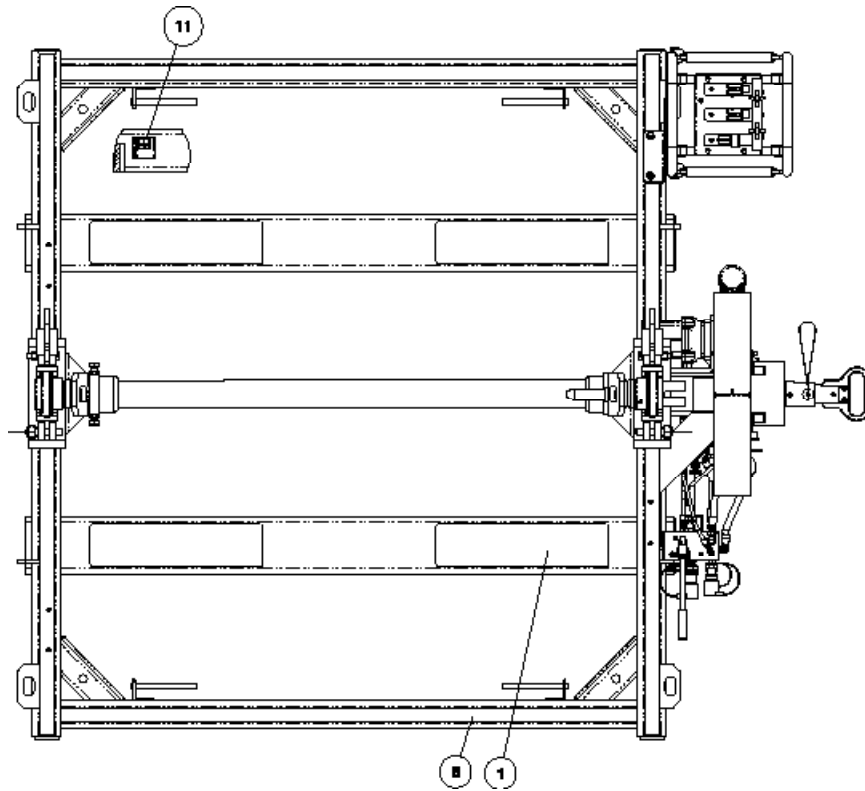
6.

CONDUX TESMEC, INC., REEL STAND
REPLACEMENT LABELS
21032700



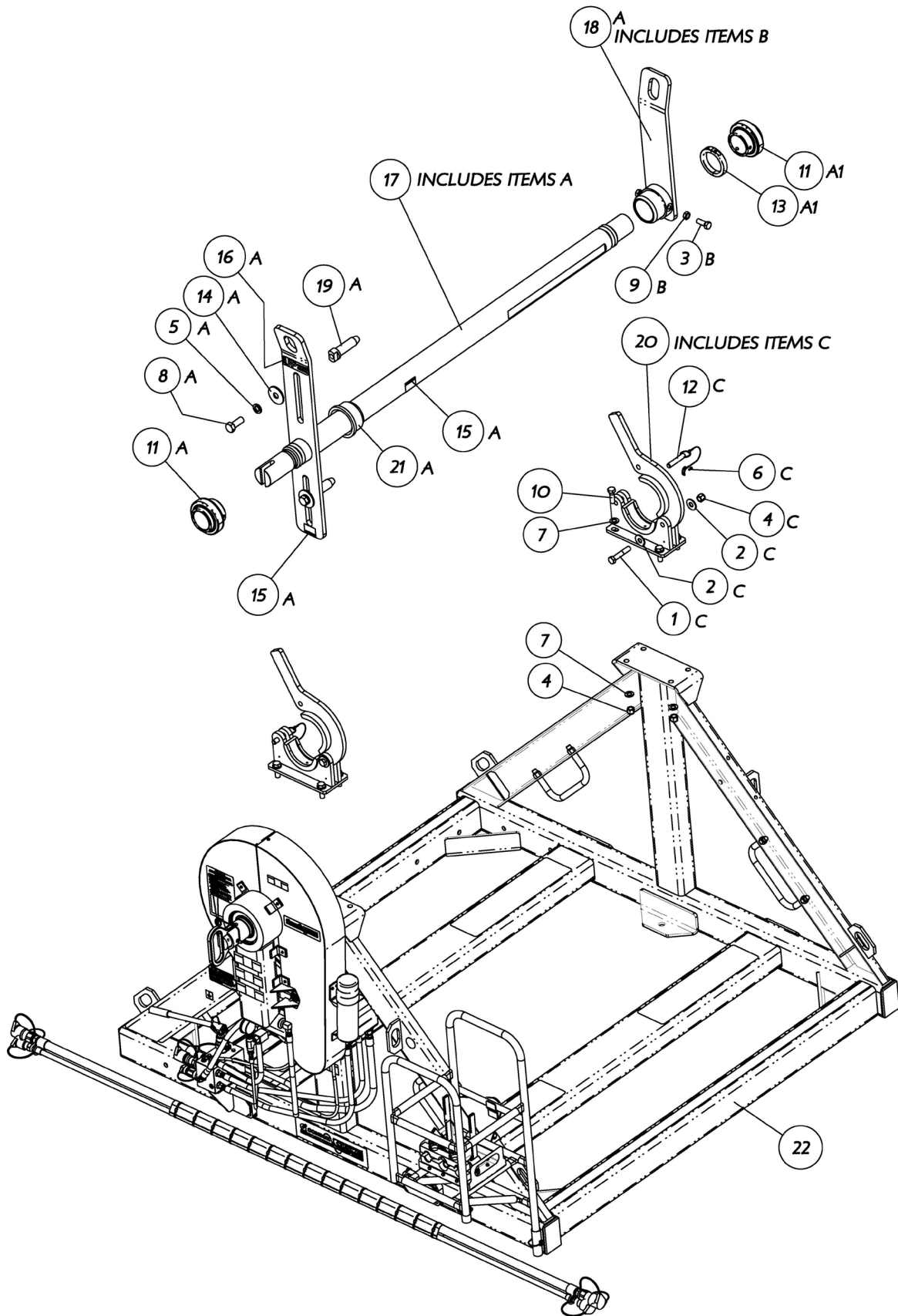
ITEM	PART NO	DESCRIPTION	QTY
1	02266200	STRIP,ANTI-SLIP FO TRAILER	4
2	02269300	LABEL,WARNING-READ MANUAL 2X6	1
3	02269303	LABEL,WARNING-HYD FLUID 2X6	1
4	02269603	LABEL,WARNING-CAPSTN CATCH 2X6	2
5	02269604	LABEL,WARNING-CABLE TENSION 2X6	2
6	02269731	LABEL,WARNING-STAY CLR 1.5 X 4.5	1
7	02289355	LABEL,LIFT POINT ISO STD	4
8	02289499	TAPE,ABRASIVE ANTISLIP 2IN X 80IN	2
9	02289504	SCREW,DRIVE #4 X 0.375 SS	4
10	02289636	DECAL,CONDUX LOGO BLUE/CLEAR	1
11	02289640	LABEL,GROUND - ISO 1.5 X 1.5	2
12	02289740	TAG,METAL SERIAL NUMBER	1
13	21032542	LABEL,INST-REEL LOADING URW24	1

CONDUX TESMEC, INC., REEL STAND
REPLACEMENT LABELS
21032700



ITEM	PART NO	DESCRIPTION	QTY
1	02266200	STRIP,ANTI-SLIP FO TRAILER	4
2	02269300	LABEL,WARNING-READ MANUAL 2X6	1
3	02269303	LABEL,WARNING-HYD FLUID 2X6	1
4	02269603	LABEL,WARNING-CAPSTN CATCH 2X6	2
5	02269604	LABEL,WARNING-CABLE TENSION 2X6	2
6	02269731	LABEL,WARNING-STAY CLR 1.5 X 4.5	1
7	02289355	LABEL,LIFT POINT ISO STD	4
8	02289499	TAPE,ABRASIVE ANTISLIP 2IN X 80IN	2
9	02289504	SCREW,DRIVE #4 X 0.375 SS	4
10	02289636	DECAL,CONDUX LOGO BLUE/CLEAR	1
11	02289640	LABEL,GROUND - ISO 1.5 X 1.5	2
12	02289740	TAG,METAL SERIAL NUMBER	1
13	21032542	LABEL,INST-REEL LOADING URW24	1

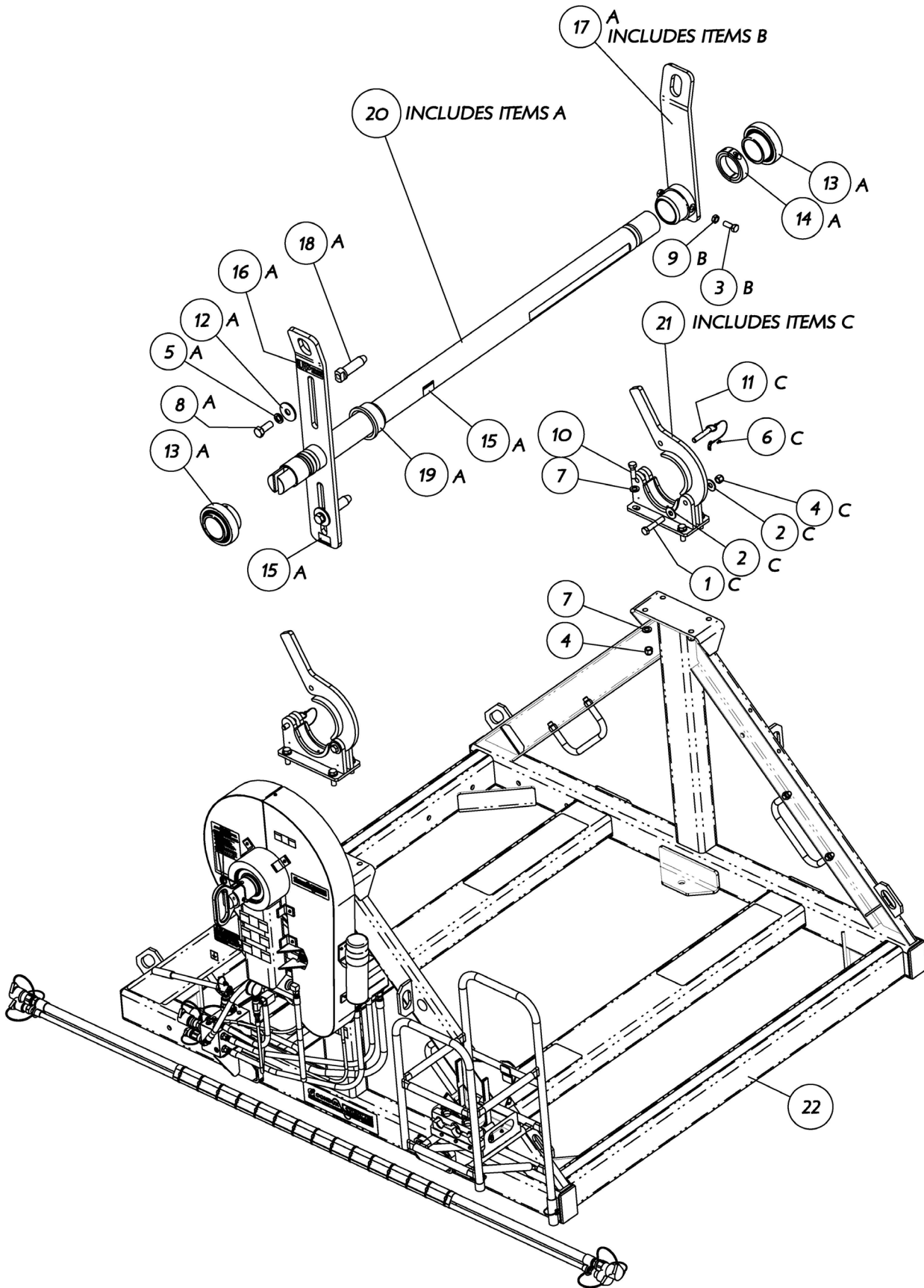
CONDUX TESMEC INC.,
RS20 REEL STAND ASSY (20000LBS)



21032700 RS20 REEL STAND ASSY (20000LBS)

ITEM	PART NO	DESCRIPTION	QTY
1	02036601CT	3/4-10 X 4.00 HEX HD CAPSCREW GR8 YZ	2
2	02123904CT	3/4 FLATWASHER TYPEA W CZ	4
3	02129105CT	3/4-10 X 2.00 HEX HD CAPSCREW SS T316	2
4	02200600CT	3/4-10 NYLOC NUT GR5 CZ	10
5	02202701CT	1.00 LOCKWASHER REG CZ	2
6	02266400CT	#10-24 X 0.50 HEX FLANGE HD CAPSCREW GR5 CZ	2
7	02288518CT	3/4 FLATWASHER TYPEA NARR CZ	16
8	02289465CT	1.00-08 X 2.50 HEX HD CAPSCREW GR8 YZ	2
9	02289600CT	3/4-10 HEX JAM NUT CZ	2
10	02289601CT	3/4-10 X 2.25 HEX HD CAPSCREW GR5 CZ	8
11	02289700CT	BEARING,MBB 3.500 6.299 3.781	2
12	02289729CT	3/4 X 2.50 QUICK RELEASE PIN	2
13	02290123CT	4IN SHAFT COLLAR-2 PIECE	1
14	02290601CT	1.00 FENDER WASHER CZ	2
15	02290619CT	LABEL,MAX LOAD CAP 20000 LBS	4
16	21032541	LABEL,UP DIRECTIONAL URW24	2
17	21032730	4IN ARBOR BAR ASSY - RS20	1
18	21032734	LIFT PLATE ASSY	1
19	21032753	DRUM DRIVE STUD	2
20	21032786	BEARING SADDLE ASSY - RS20	2
21	21032795	4IN DRUM PILOT HUB-NYLON	1
22	21032700SUB	REEL STAND-SUBASSY RS20/26	1

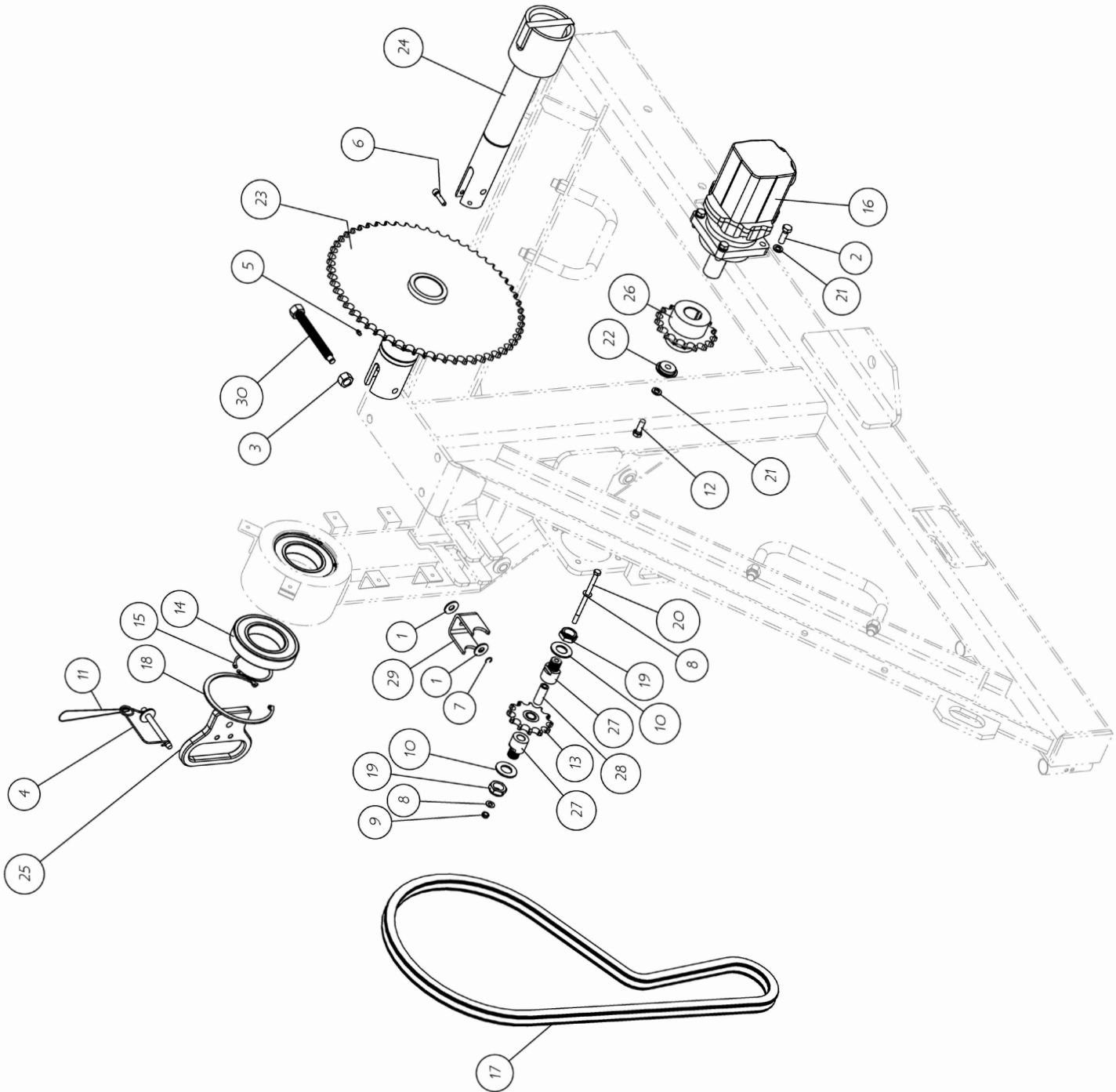
CONDUX TESMEC INC.,
RS26 REEL STAND ASSY (26000LBS)



21034200 RS26 REEL STAND ASSY (26000 LB)

ITEM	PART NO	DESCRIPTION	QTY
1	02036601CT	3/4-10 X 4.00 HEX HD CAPSCREW GR8 YZ	2
2	02123904CT	3/4 FLATWASHER TYPEA W CZ	4
3	02129105CT	3/4-10 X 2.00 HEX HD CAPSCREW SS T316	2
4	02200600CT	3/4-10 NYLOC NUT GR5 CZ	10
5	02202701CT	1.00 LOCKWASHER REG CZ	2
6	02266400CT	#10-24X0.50 HEX FLANGE HD CAPSCREW GR5 CZ	2
7	02288518CT	3/4 FLATWASHER TYPEA NARR CZ	16
8	02289465CT	1.00-08 X 2.50 HEX HD CAPSCREW GR8 YZ	2
9	02289600CT	3/4-10 HEX JAM NUT CZ	2
10	02289601CT	3/4-10 X 2.25 HEX HD CAPSCREW GR5 CZ	8
11	02289729CT	3/4 X 2.50 QUICK RELEASE PIN	2
12	02290601CT	1.00 FENDER WASHER CZ	2
13	02290608CT	BEARING,MBB 100MM 180MM 98.4MM	2
14	02290609CT	4IN SHAFT COLLAR-HEAVY	1
15	02290620CT	LABEL,MAX LOAD CAP 26000 LBS	4
16	21032541	LABEL,UP DIRECTIONAL URW24	2
17	21032734	LIFT PLATE ASSY	1
18	21032753	DRUM DRIVE STUD	2
19	21032795	4IN DRUM PILOT HUB-NYLON	1
20	21034220	4IN ARBOR BAR ASSY - RS26	1
21	21034221	BEARING SADDLE ASSY - RS26	2
22	21032700SUB	REEL STAND-SUBASSY RS20/26	1

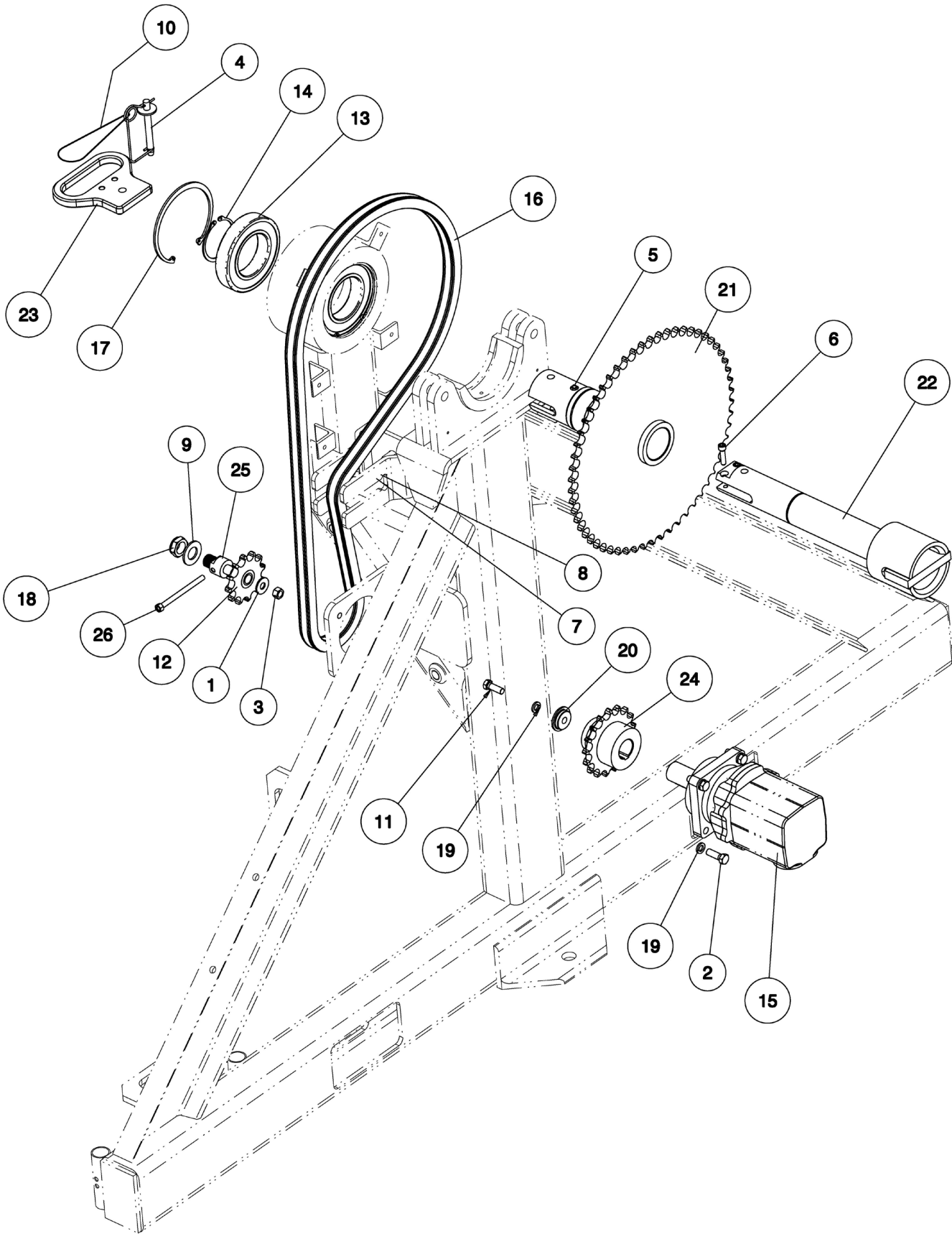
**CONDUX TESMEC INC.,
CHAIN DRIVE DETAIL - REEL STAND ASSY**



CHAIN DRIVE DETAIL - REEL STAND ASSY
RS20 - SERIAL NO AK269 AND LATER
RS26 - SERIAL NO AR* AND LATER**

ITEM	PART NO	DESCRIPTION	QTY
1	02021301CT	1/2 FLATWASHER TYPE A WIDE CZ	2
2	02038401CT	1/2-13 X 1.50 HEX HD CAPSCREW GR8 YZ	4
3	02125106CT	3/4-10 HEX NUT 304SS	1
4	02208300CT	1/2 X 3.50 SNAP LOCK PIN	1
5	02222000CT	1/4-28 GREASE ZERK STRAIGHT	1
6	02234100CT	3/8-16 X 1.50 SOCKET HD CAPSCREW	2
7	02287310CT	1/2 EXT RETAINING RING	1
8	02288230CT	3/8 FLATWASHER TYPE A NARR CZ	2
9	02288419CT	3/8-16 NYLOC NUT GR2 CZ THIN	1
10	02288457CT	1.0 FLATWASHER TYPE A NARR CZ	2
11	02288876CT	LANYARD	1
12	02289525CT	M12-1.75 X 35 HEX HD CAPSCREW 8.8 CZ	1
13	02289585CT	IDLER SPROCKET	1
14	02289588CT	DGB BEARING(SEALED) - 90ID X 160OD	2
15	02289592CT	3 1/2 EXT RETAINING RING	1
16	02289680CT	BRAKE/MOTOR ASSY	1
17	02289701CT	#80 ROLLER CHAIN X 96LINK	1
18	02289705CT	6 1/2 INT RETAINING RING	2
19	02289734CT	1.0-14 NYLOC NUT GR2 CZ THIN	2
20	02290221CT	3/8-16 X 6.00 HEX HD CAPSCREW GR2 CZ	1
21	12010600CT	1/2 LOCKWASHER CZ	5
22	21032573	DRIVE SPROCKET RETAINER	1
23	21032719	#80 X 58T DRIVE SPROCKET	1
24	21032722	REEL DRIVE SHAFT	1
25	21032726	REEL DRIVE SHAFT HANDLE	1
26	21032746	MOTOR DRIVE SPROCKET	1
27	21032779	TENSION ADJUSTMENT SHAFT	2
28	21032780	IDLER SPROCKET SHAFT	1
29	21032781	IDLER SPROCKET ADJUSTMENT SADDLE	1
30	21032782	IDLER SPROCKET ADJUSTMENT SHAFT	1

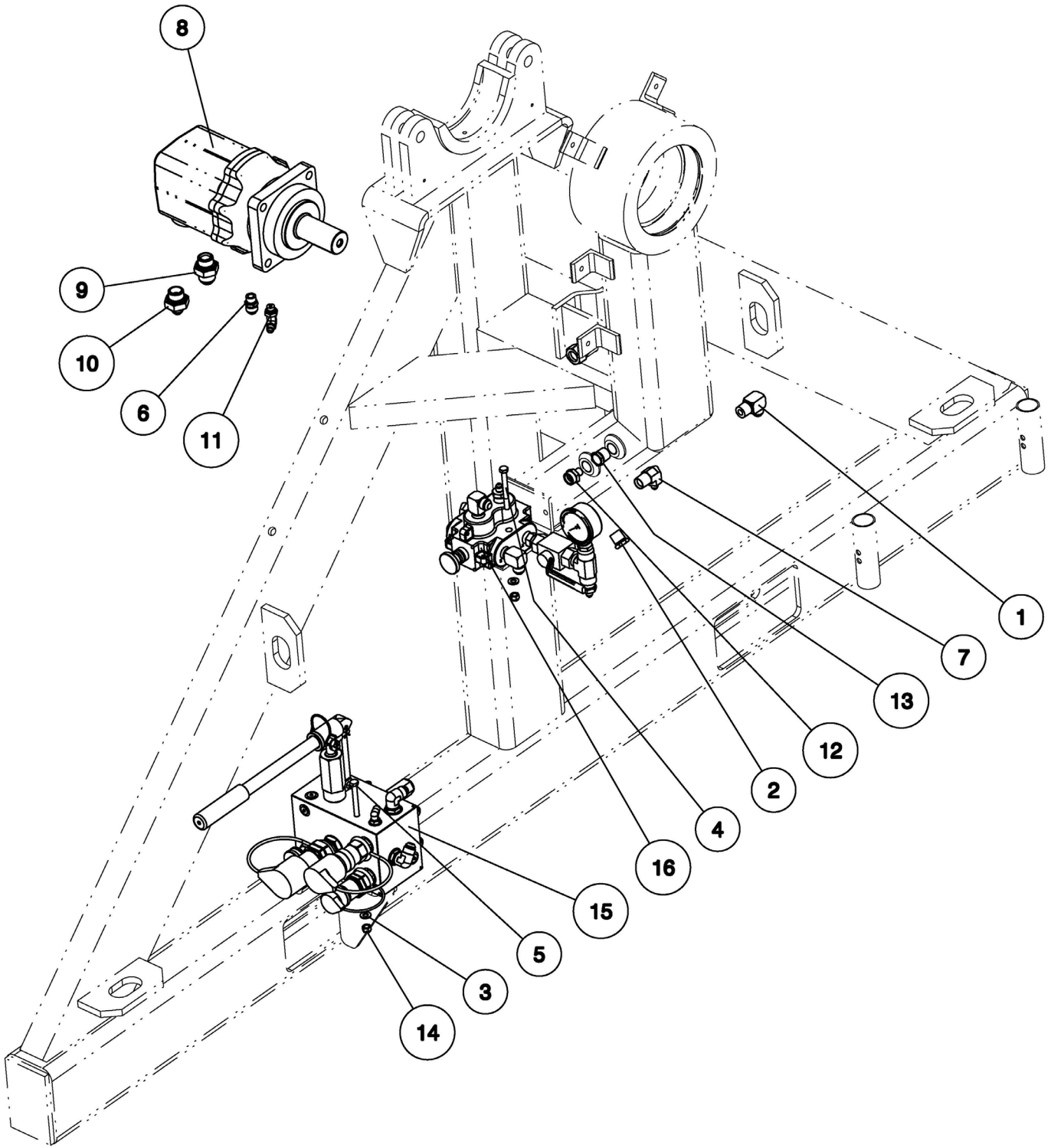
CONDUX TESMEC INC.,
CHAIN DRIVE DETAIL - REEL STAND ASSY



CHAIN DRIVE DETAIL - REEL STAND ASSY
RS20 - SERIAL NO AK268 AND EARLIER
RS26 - SERIAL NO AR* AND EARLIER**

ITEM	PART NO	DESCRIPTION	QTY
1	02021301CT	1/2 FLATWASHER TYPEA WIDE CZ	1
2	02038401CT	1/2-13 X 1.50 HEX HD CAPSCREW GR8 YZ	4
3	02125104CT	1/2-13 HEX NUT SS T316	1
4	02208300CT	1/2 X 3.50 LG SNAP LOCK PIN	1
5	02222000CT	GREASE ZERK-SHORT STR 1/4-28	1
6	02234100CT	3/8-16 X 1.50 SOCKET HD CAPSCREW ALY PL	2
7	02288262CT	3/8 NYLON FLATWWASHER	1
8	02288419CT	3/8-16 NYLOC NUT THIN GR2 CZ	1
9	02288457CT	1.00 FLATWASHER TYPEA NARR CZ	1
10	02288876CT	LANYARD, ALL UNIVER COUPLINGS	1
11	02289525CT	M12-1.75 X 35 HEX HD CAPSCREW 8.8 CZ	1
12	02289585CT	IDLER SPROCKET HB80A12 X 3/4	1
13	02289588CT	BEARING,DGB 90 ID 160MM OD SLD	2
14	02289592CT	3 1/2 EXT RETAINING RING	1
15	02289680CT	BRAKE ASSY W/MOTOR	1
16	02289701CT	CHAIN,#80-1PTCH 96PTCHS SGL	1
17	02289705CT	6 1/2 INT RETAINING RING	2
18	02289734CT	1.00-14 NYLOC NUT THIN GR2 CZ	1
19	12010600CT	1/2 LOCKWASHER REGULAR CZ	5
20	21032573	DRIVE SPROCKET RETAINER-DANFOSS	1
21	21032719	DRIVE SPROCKET - #80 X 58T	1
22	21032722	REEL DRIVE SHAFT	1
23	21032726	REEL DRIVE SHAFT HANDLE	1
24	21032746	MAIN DRIVE HUB - REEL STAND	1
25	21032772	TENSIONER ADJUSTMENT SHAFT	1
26	21032774	ADJUSTMENT SCREW - CHAIN TENSIONER	1

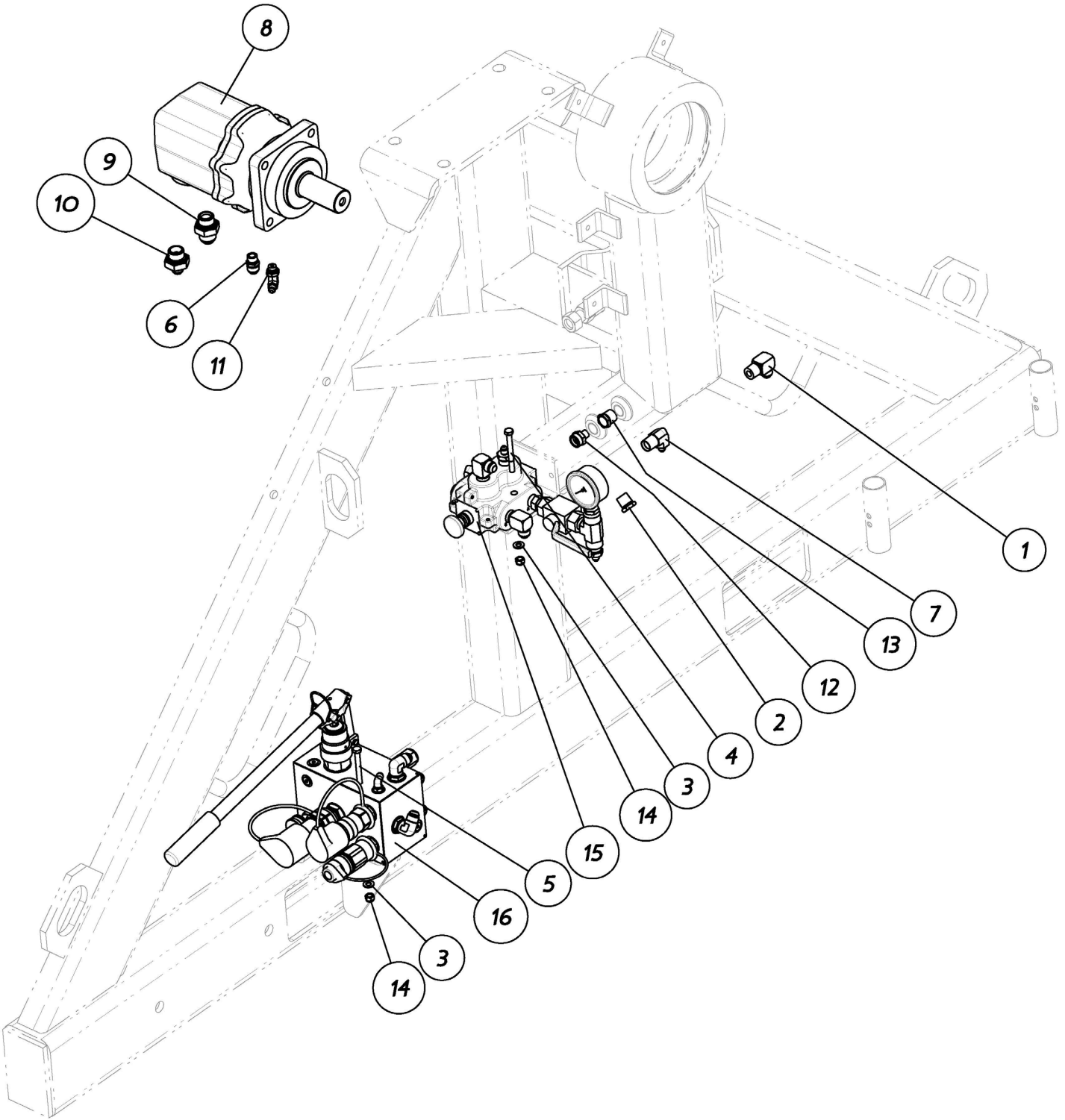
CONDUX TESMEC INC.,
HYDRAULIC DRIVE- REEL STAND ASSY



HYDRAULIC DRIVE DETAIL - REEL STAND ASSY**RS20 - SERIAL NO AK320 AND LATER****RS26 - SERIAL NO AR*** AND LATER**

ITEM	PART NO	DESCRIPTION	QTY
1	02093600CT	HYD FITTING - 08 NPT X 08 JIC 90EL	1
2	02198000CT	HYD FITTING - 08 NPT HEX PLUG	1
3	02288231CT	5/16 FLATWASHER TYPE A NARR CZ	4
4	02288430CT	5/16-18 X 3.00 HEX HD CAPSCREW GR5 CZ	2
5	02288492CT	5/16-18 X 6.00 HEX HD CAPSCREW GR5 CZ	2
6	02289565CT	HYD FITTING - 08 JIC X 06 BSPP	1
7	02289608CT	HYD FITTING - 08 NPT X 04 JIC 90EL	1
8	02289680CT	BRAKE/MOTOR ASSY	1
9	02289681CT	HYD FITTING - 12 JIC X 12 BSPP	1
10	02289682CT	HYD FITTING - 08 JIC X 12 BSPP	1
11	02289684CT	HYD FITTING - 04 JIC X 04 BSPP 90EL	1
12	02289711CT	1/2 NPT SITE GAUGE	1
13	02289712CT	1/2 NPT BREATHER VENT	1
14	12002300CT	5/16-18 NYLOC NUT GR5 CZ	4
15	21032775	CONTROL VALVE ASSY-REEL STAND	1
16	21034215	MANIFOLD ASSY-REEL STAND	1

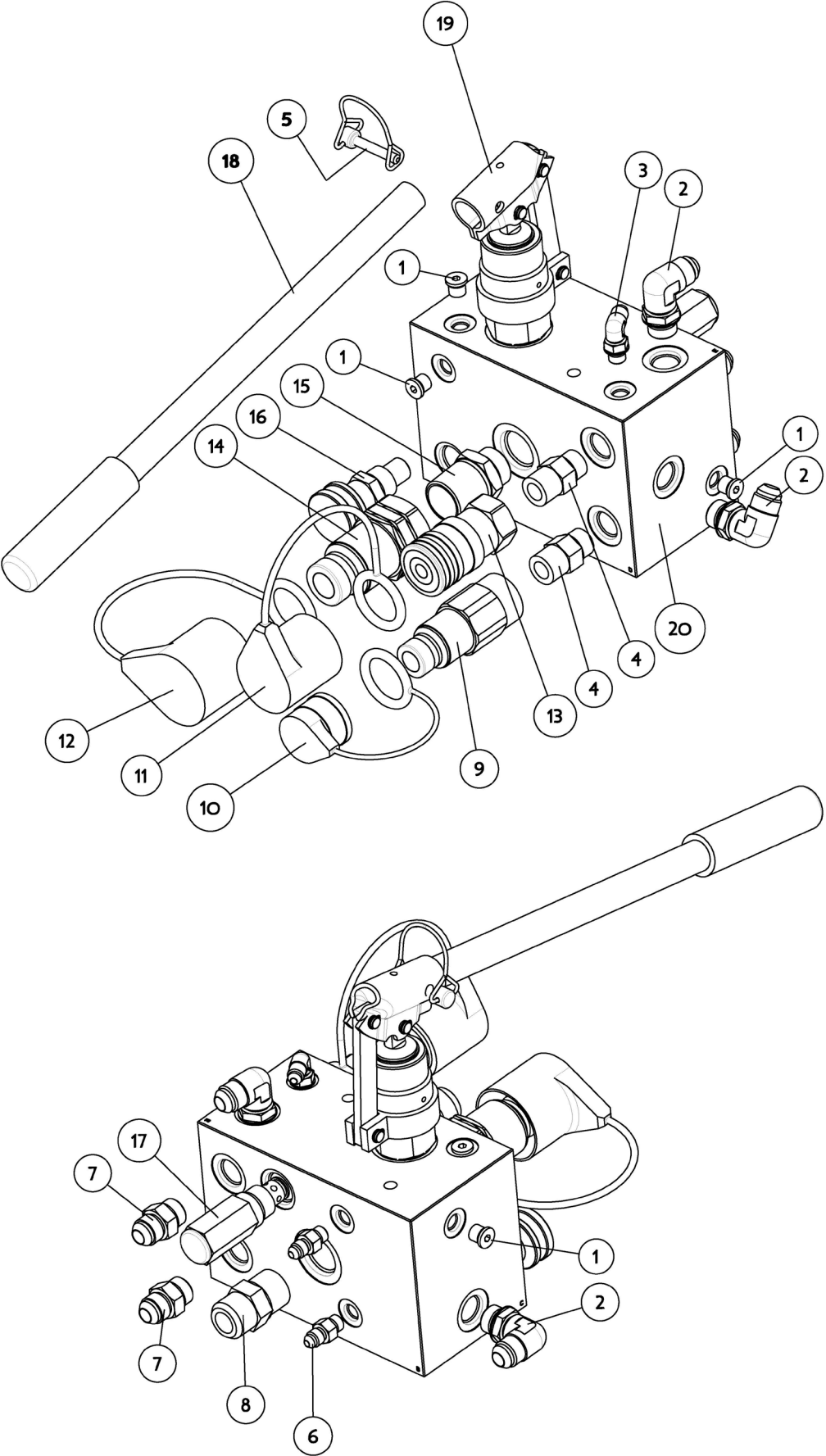
CONDUX TESMEC INC.,
HYDRAULIC DRIVE- REEL STAND ASSY



HYDRAULIC DRIVE DETAIL - REEL STAND ASSY
RS20 - SERIAL NO AK319 AND EARLIER
RS26 - SERIAL NO AR* AND EARLIER**

ITEM	PART NO	DESCRIPTION	QTY
1	02093600	HYD FITTING 08 NPT (M) X 08 JIC (M) 90EL	1
2	02198000	HYD FITTING 08 NPT (M) HEX PLUG	1
3	02288231	5/16 FLATWASHER TYPEA-NARR CZ	4
4	02288430	5/16-18 X 3.00 HEX HD CAPSCREW GR5 CZ	2
5	02288492	5/16-18 X 6.00 HEX HD CAPSCREW GR5 CZ	2
6	02289565	HYD FITTING 08 JIC X 06 BSPP W/ SEAL	1
7	02289608	HYD FITTING 08 NPT (M) X 04 JIC (M) 90EL	1
8	02289680	BRAKE ASSY W/MOTOR-PAINTED	1
9	02289681	HYD FITTING 12 JIC X 12 BSPP W/SEAL	1
10	02289682	HYD FITTING 08 JIC X 12 BSPP W/SEAL	1
11	02289684	HYD FITTING 04 JIC X 04 BSPP W/SEAL 90EL	1
12	02289711	SITE GAUGE-GLASS 1/2-14NPT	1
13	02289712	HYD FITTING 08 NPT BREATHER VENT	1
14	12002300	5/16-18 NYLOC NUT GR5 CZ	4
15	21032765	MANIFOLD ASSY - REEL STAND	1
16	21032775	CONTROL VALVE ASSY-REEL STANDS	1

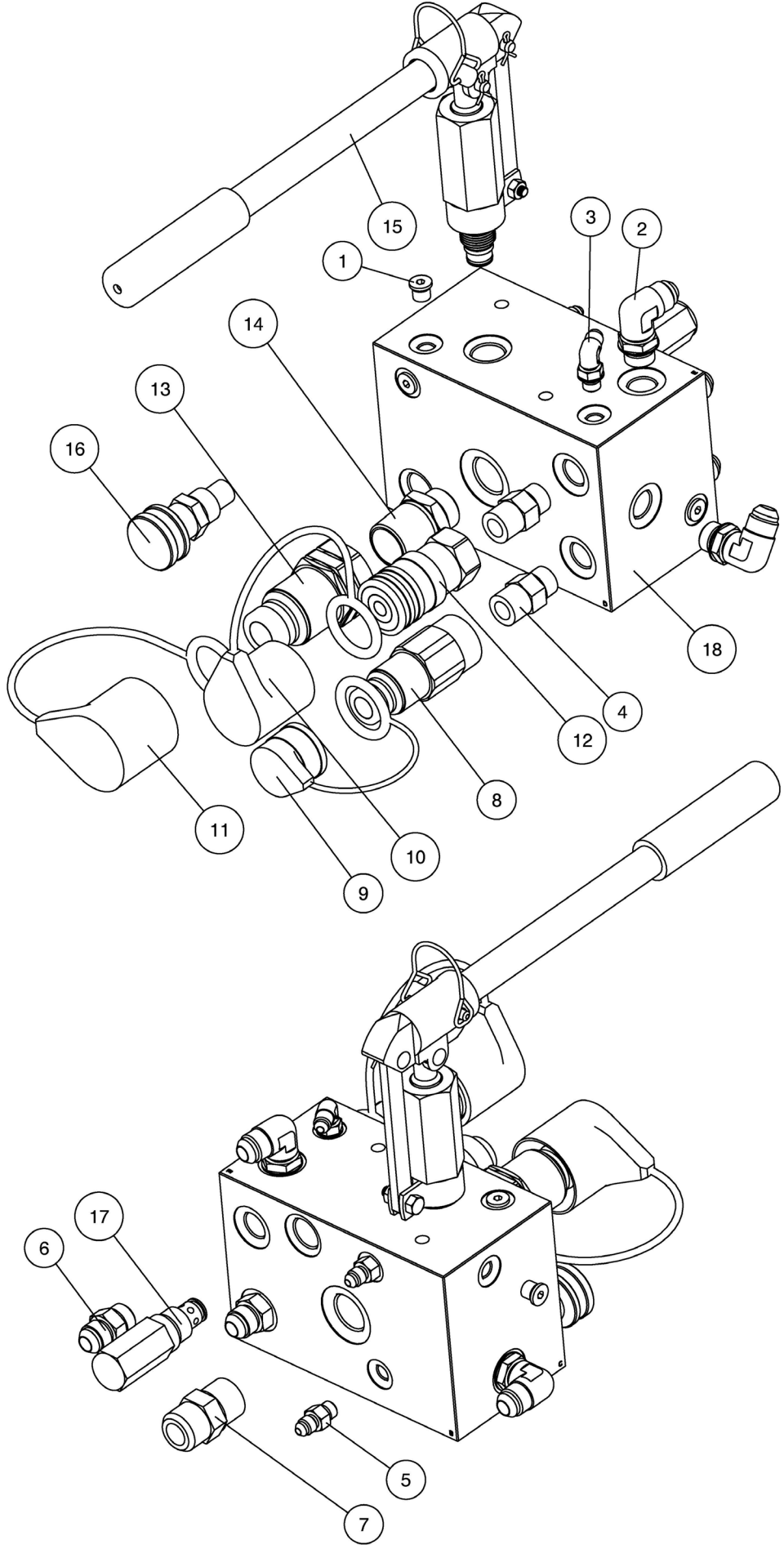
**CONDUX TESMEC INC.,
HYD HAND PUMP MANIFOLD**



21034215 HYD HAND PUMP MANIFOLD - REEL STAND ASSY**RS20 - SERIAL NUMBER AK320 AND LATER****RS26 - SERIAL NUMBER AR*** AND LATER**

ITEM	PART NO	DESCRIPTION	QTY
1	02045904CT	HYD FITTING 04 O-RING PLUG	5
2	02094200CT	HYD FITTING 08 O-RING X 08 JIC 90EL	3
3	02127000CT	HYD FITTING 04 O-RING X 04 JIC 90EL	11
4	02269600CT	HYD FITTING 08 O-RING X 08 NPT	2
5	02269688CT	1/4 X 1 3/8 QUICK PIN	2
6	02269692CT	HYD FITTING 04 O-RING X 04 JIC	2
7	02288687CT	HYD FITTING 08 O-RING X 08 JIC	2
8	02288740CT	HYD FITTING 12 O-RING X 12 JIC	1
9	02289615CT	QUICK COUPLER MALE - 1/2 NPT	1
10	02289617CT	PROTECTIVE CAP - MALE QUICK COUPLER	1
11	02289626CT	PROTECTIVE CAP - FEMALE QUICK COUPLER	1
12	02289627CT	PROTECTIVE CAP - MALE QUICK COUPLER	1
13	02289632CT	QUICK COUPLER FEMALE - 1/2 NPT	1
14	02289715CT	QUICK COUPLER MALE - 1IN NPT	1
15	02289716CT	HYD FITTING 12 O-RING X 16 NPT	1
16	02289718CT	NEEDLE CARTRIDGE VALVE	1
17	02290036CT	RELIEF CARTRIDGE VALVE - 750PSI	1
18	02290607CT	HAND PUMP HANDLE	1
19	21034213	HAND PUMP VALVE ASSY	1
20	21034214	MANIFOLD BLOCK	1

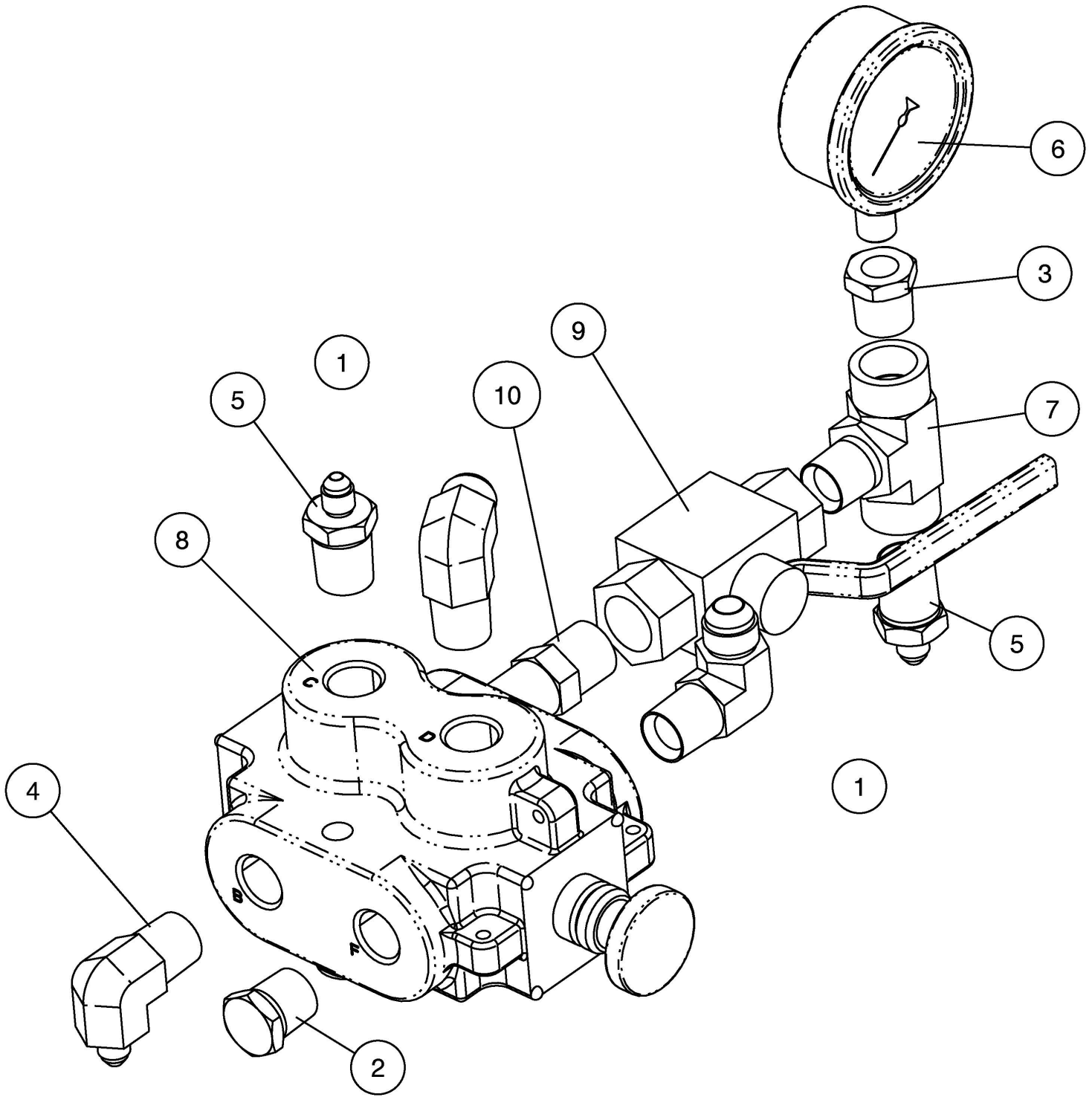
**CONDUX TESMEC INC.,
HYD HAND PUMP MANIFOLD**



21032765 HYD HAND PUMP MANIFOLD - REEL STAND ASSY**RS20 - SERIAL NUMBER AK319 AND EARLIER****RS26 - SERIAL NUMBER AR*** AND EARLIER**

ITEM	PART NO	DESCRIPTION	QTY
1	02045904CT	HYD FITTING 04 O-RING PLUG	5
2	02094200CT	HYD FITTING 08 O-RING X 08 JIC 90EL	3
3	02127000CT	HYD FITTING 04 O-RING X 04 JIC 90EL	1
4	02269600CT	HYD FITTING 08 O-RING X 08 NPT	2
5	02269692CT	HYD FITTING 04 O-RING X 04 JIC	2
6	02288687CT	HYD FITTING 08 O-RING X 08 JIC	2
7	02288740CT	HYD FITTING 12 O-RING X 12 JIC	1
8	02289615CT	COUPLER,QD-MALE 1/2IN NPT	1
9	02289617CT	CAP,QD NIPPLE (M)-1/2IN BODY	1
10	02289626CT	CAP,QD COUPLER (F)-1/2IN BODY	1
11	02289627CT	CAP,QD NIPPLE (M)-3/4IN BODY	1
12	02289632CT	COUPLER,QD-FEMALE 1/2IN NPT	1
13	02289715CT	COUPLER,QD-MALE 1IN NPT	1
14	02289716CT	HYD FITTING 12 O-RING X 16 NPT	1
15	02289717CT	VALVE,CARTRIDGE-HAND PUMP-ASSY	1
16	02289718CT	VALVE,CARTRIDGE-NEEDLE VALVE	1
17	02290036CT	VALVE,CARTRIDGE-RELIEF 750PSI	1
18	21032766	BLOCK,MANIFOLD - REEL STAND	1

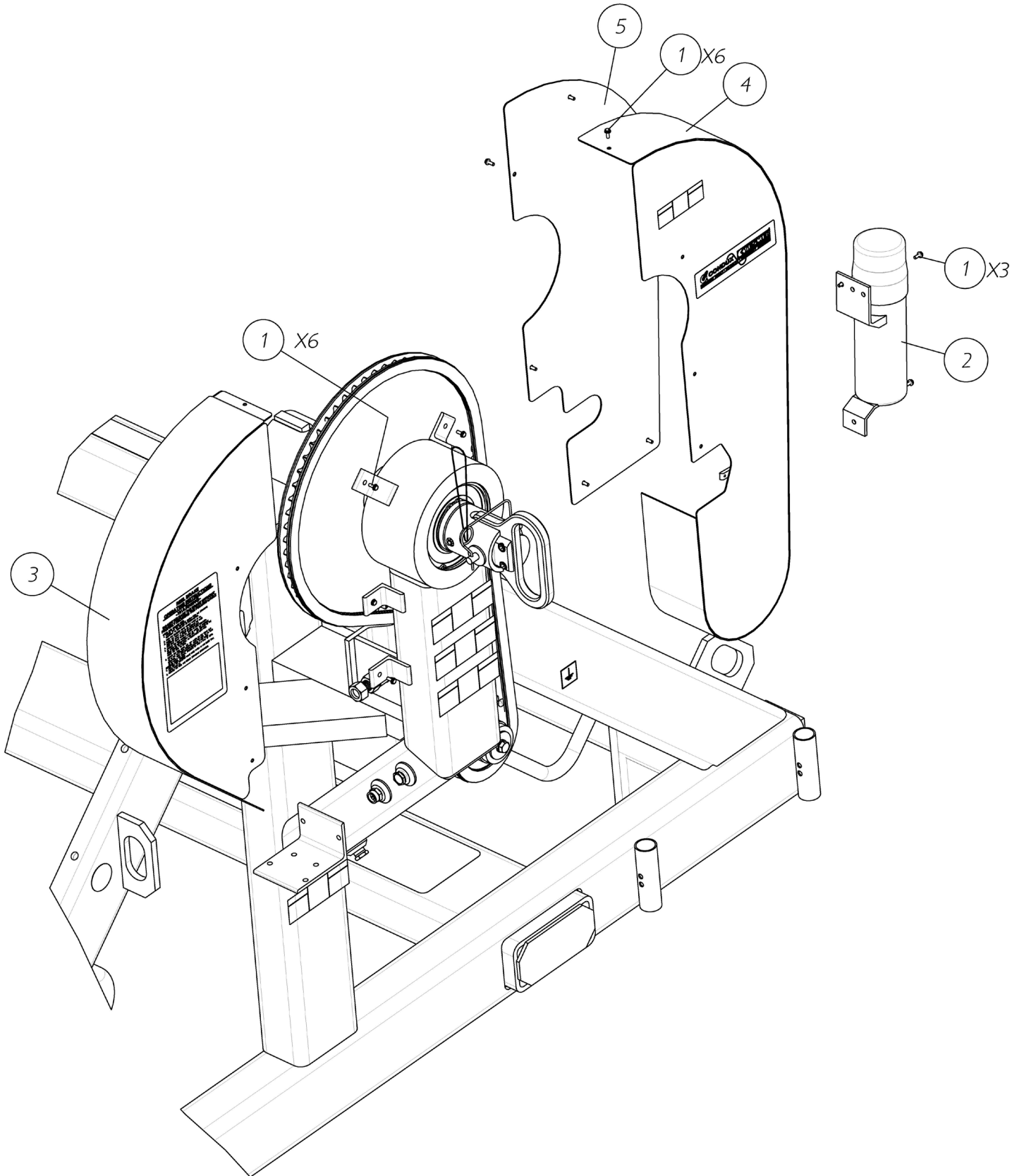
CONDUX TESMEC INC.,
HYDRAULIC CONTROL VALVE



HYD CONTROL VALVE - REEL STAND ASSY**21032775**

ITEM	PART NO	DESCRIPTION	QTY
1	02093600CT	HYD FITTING 08 NPT (M) X 08 JIC (M) 90EL	2
2	02198000CT	HYD FITTING 08 NPT (M) HEX PLUG	1
3	02286437CT	HYD FITTING 08 NPT (M) X 04 NPT (F)	1
4	02289608CT	HYD FITTING 08 NPT (M) X 04 NPT (F)	1
5	02289609CT	HYD FITTING 08 NPT (M) X 04 JIC (M)	2
6	02289613CT	PRESSURE GAUGE 0 - 1000PSI	1
7	02289641CT	HYD FITTING 08 NPT (M) X 08 NPT (F) TEE	1
8	02289685CT	HYD CONTROL VALVE 6WAY 2POS	1
9	02290111CT	HYD CONTROL VALVE 2WAY	1
10	12003900	HYD FITTING 08 NPT (M) X 08 NPT (M)	1

CONDUX TESMEC INC.,
CHAIN GUARD

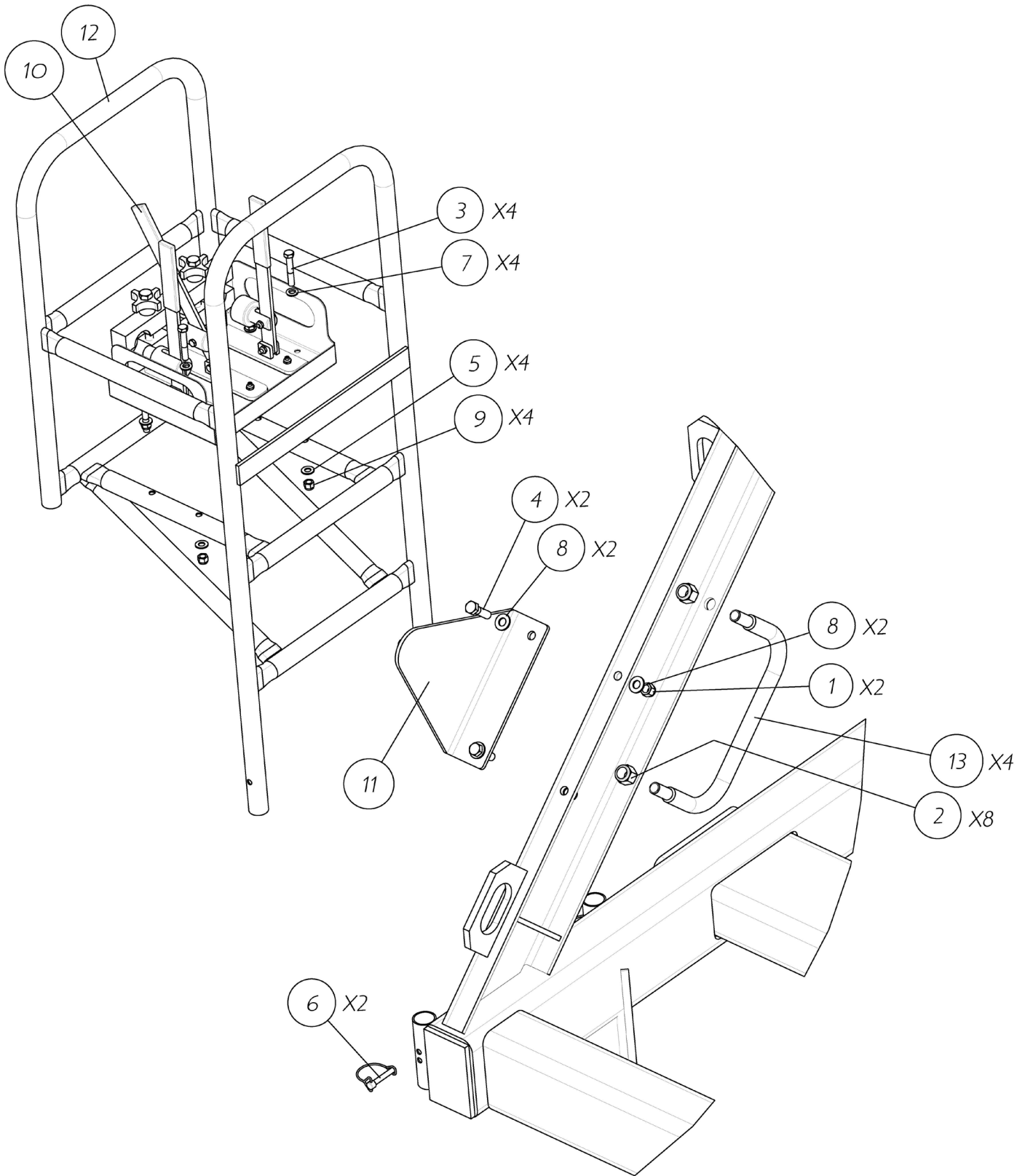


CHAIN GUARD - REEL STAND ASSY

21032700SUB

ITEM	PART NO	DESCRIPTION	QTY
1	02266400CT	#10-24X0.50 HEX FLANGE HD CAPSCREW GR5 CZ	18
2	02289639CT	MANUAL HOLDER-WEATHERPROOF	1
3	21032737	CHAIN GUARD "A"	1
4	21032741	CHAIN GUARD "B"	1
5	21032744	BACK PLATE - CHAIN GUARD "B"	1

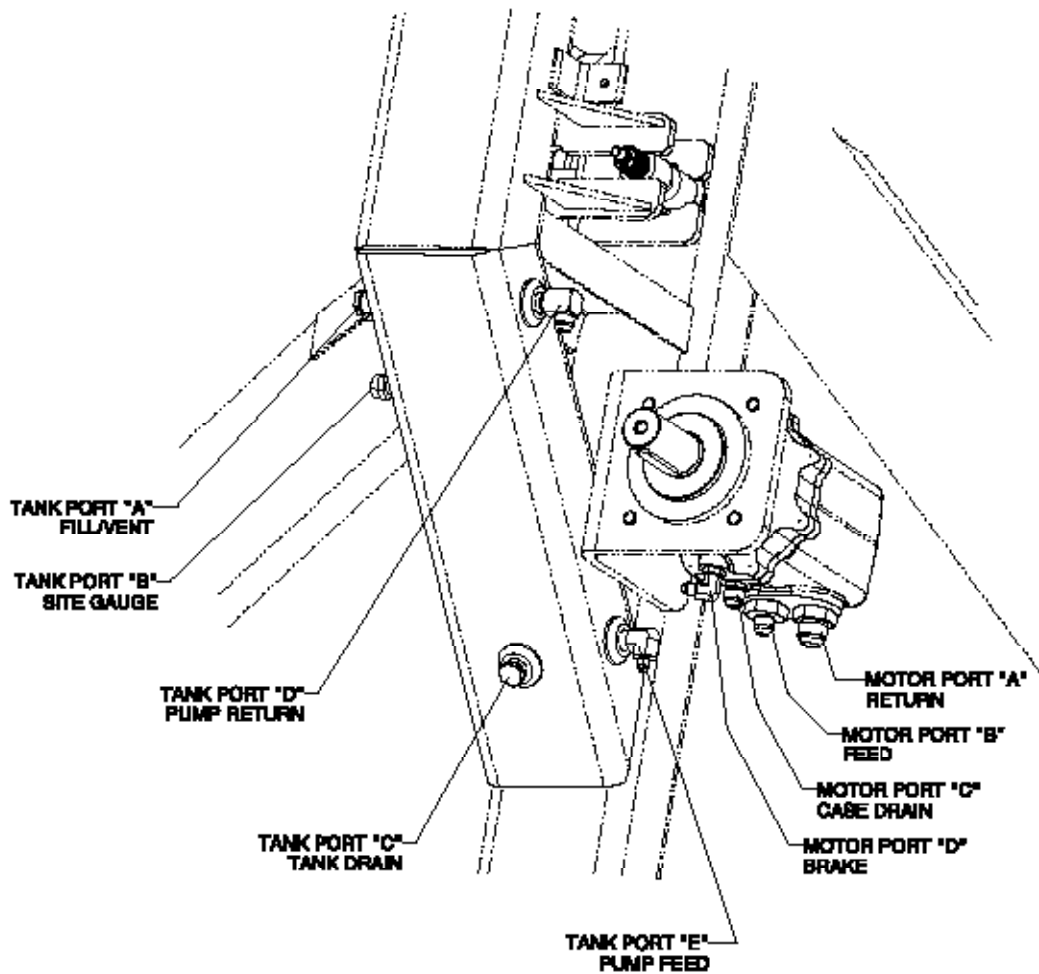
CONDUX TESMEC INC.,
HOSE RACK/GROUND ATTACHMENT



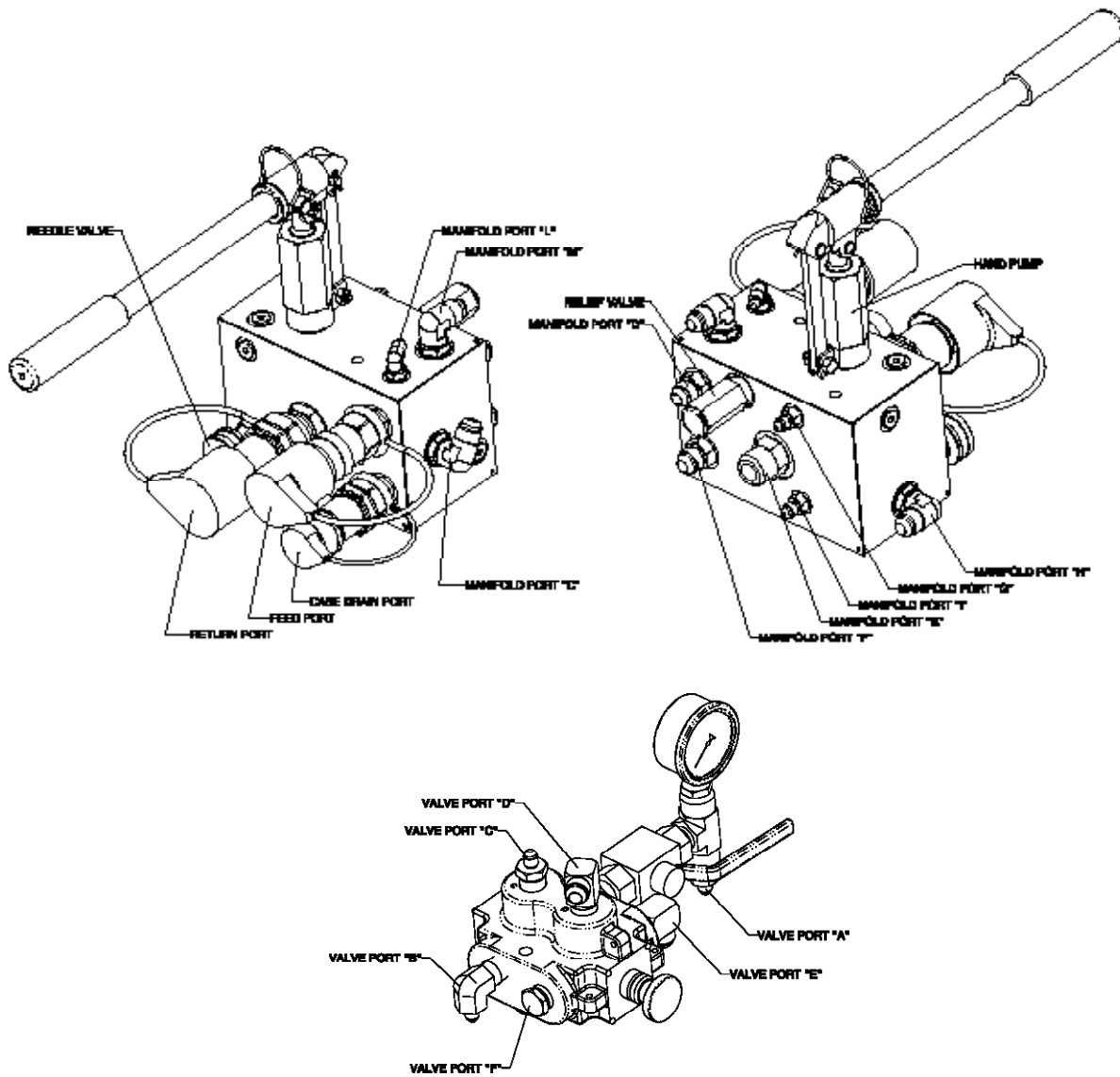
**HOSE RACK/GROUND ATTACHMENT - REEL STAND ASSY
21032700SUB**

ITEM	PART NO	DESCRIPTION	QTY
1	02010100CT	1/2-13 NYLOC NUT GR5 CZ	2
2	02200600CT	3/4-10 NYLOC NUT GR5 CZ	8
3	02204301CT	3/8-16 X 2.25 HEX HD CAPSCREW GR8 YZ	4
4	02253600CT	1/2-13 X 1.75 HEX HD CAPSCREW GR5 CZ	2
5	02288230CT	3/8 FLATWASHER TYPE A NARR CZ	4
6	02288856CT	5/16 X 1.75 QUICK LOCK PIN	2
7	02290881CT	7/16 NEOPRENE SEAL WASHER	4
8	12008301CT	1/2 FLATWASHER TYPE A NARR CZ	4
9	12013500CT	3/8-16 NYLOC NUT GR5 CZ	4
10	21031050	PRESSURE RELIEF TOOL - HYD HOSE	1
11	21032755	HOSE RACK SUPPORT	1
12	21032760	HOSE RACK	1
13	21033919	BRASS GROUNDING BAR	4

CONDUX TESMEC, INC., REEL STAND
HYDRAULIC HOSE DETAIL



PART NO	DESCRIPTION	QTY
02288689	1/2IN x 30IN LG Hose Assembly	1
02288692	1/2IN x 48IN LG Hose Assembly	1
02288697	3/4IN x 44IN LG Hose Assembly	1
02289720	1/4IN x 18IN Lg Hose Assembly	1
02289721	1/4IN x 26IN Lg Hose Assembly	2
02289722	1/4IN x 36IN Lg Hose Assembly	1
02289723	1/2IN x 22IN LG Hose Assembly	1
02289724	1/2IN x 40IN LG Hose Assembly	2
21032767	1/2IN x 50FT LG Feed Hose Assembly	1
21032768	1 IN x 50FT LG Return Hose Assembly	1
21032769	1/2IN x 50FT LG Case Drain Hose Assembly	1
21032770	1/2IN x 25FT LG Feed/Case Drain Hose Assembly EXT	1
21032771	1 IN x 25FT LG Return Hose Assembly EXT	1



PART NO	1st CONNECTION	2nd CONNECTION	QTY
02288697	Motor Port "A"	Manifold Port "E"	1
02289724	Motor Port "B"	Manifold Port "D"	1
02289724	Motor Port "C"	Manifold Port "F"	1
02289720	Motor Port "D"	Valve Port "C"	1
02289723	Valve Port "E"	Manifold Port "M"	1
02289721	Valve Port "A"	Manifold Port "G"	1
02289721	Valve Port "B"	Manifold Port "L"	1
Plugged	Valve Port "F"		1
02288689	Valve Port "D"	Manifold Port "C"	1
	Tank Port "A"	Fill/Breather Vent Port	1
	Tank Port "B"	Site Gauge Port	
Plugged	Tank Port "C"	Drain Port	
02289692	Tank Port "D"	Manifold Port "H"	
02289722	Tank Port "E"	Manifold Port "I"	

NOTES

NOTES

Condux Tesmec, Inc., Incorporated extends the following warranty to the original purchaser of these goods for use, subject to the qualifications indicated:

Condux Tesmec, Inc., warrants to the original purchaser for use that the goods or any component thereof manufactured by Condux Tesmec, Inc., will be free from defects in workmanship for a period of 1 year from the date of purchase, provided such goods are installed, maintained, and used in accordance with Condux Tesmec's written instructions.

Components not manufactured by Condux Tesmec, Inc., but used within the assembly provided by Tesmec, Inc., are subject to the warranty period as specified by the individual manufacturer of said component, provided such goods are installed, maintained, and used in accordance with Condux Tesmec, Inc., and the original manufacturer's written instructions.

Condux Tesmec, Inc.'s sole liability and the purchaser's sole remedy for a failure of goods under this limited warranty, and for any and all claims arising out of the purchase and use of goods, shall be limited to the repair or replacement of the goods that do not conform to this warranty.

To obtain repair or replacement service under the limited warranty, the purchaser must contact the factory for a Return Material Authorization (RMA). Once obtained, send the RMA along with the defective part or goods, transportation prepaid, to:

Condux Tesmec, Inc.
145 Kingswood Drive • Suite 1
Mankato, MN 56002 USA

THERE ARE NO EXPRESS WARRANTIES COVERING THESE GOODS OTHER THAN AS SET FORTH ABOVE. THE IMPLIED WARRANTIES OR MERCHANTABILITY AND FITNESS FOR PARTICULAR PURPOSE ARE LIMITED IN DURATION TO ONE YEAR FROM DATE OF PURCHASE.

CONDUX TESMEC, INC., ASSUMES NO LIABILITY IN CONNECTION WITH THE INSTALLATION OR USE OF THIS PRODUCT, EXCEPT AS STATED IN THIS LIMITED WARRANTY, CONDUX TESMEC, INC., WILL IN NO EVENT BE LIABLE FOR INCIDENTAL OR CONSEQUENTIAL DAMAGES.



Condux Tesmec, Inc.

P.O. Box 668 • 145 Kingswood Drive • Suite 1, Mankato, MN 56002-0668 USA
1-507-387-6576 • 1-877-854-1750 • FAX 1-507-387-3855

Internet: <http://www.conduxtesmec.com> • e-mail: info@conduxtesmec.com