

URW24 Universal Reel Winder/Trailer



ISO 9001:2008
CERTIFIED

Important Safety Notice

Before using a Condux Tesmec URW24 Universal Reel Winder/Trailer, operators must read and understand all procedures and safety instructions. Note all safety information on this page, and note specific safety requirements as explained by the procedures in this manual.

Failure to follow these instructions could result in serious personal injury or death.

ADVERTENCIA:

Favor de leer y comprender todas las instrucciones de operación y seguridad antes de usar la máquina. Si Ud. No comprende las instrucciones favor de consultarle a su jefe.



Save this user's guide for future reference.

COMMUNICATION WITH THE MANUFACTURER:

For information related to the machine (use, maintenance, spare parts), always state the Model Number, Serial Number, Manufacturing Year, and Order Number. This information can be found in the Parts-Identification Table.

Manufacturer:

Condux Tesmec, Inc.
145 Kingswood Drive, Suite 1
Mankato, MN 56002-0668
1-507-387-6576
Fax 1-507-387-3855
E-mail: info@conduxtesmec.com



For questions on:
SAFETY - OPERATIONS - APPLICATIONS

CALL 1-877-854-1750

Table of Contents

IMPORTANT SAFETY NOTICE	2	5 OPERATING PROCEDURES	9
COMMUNICATION WITH THE MANUFACTURER	2	A. INITIAL SET-UP	9
1 GENERAL INFORMATION	4	B. REEL CHANGING INSTRUCTIONS -	
A. PRODUCT DESCRIPTION.....	4	REEL REMOVAL	11-15
B. GENERAL SAFETY INFORMATION.....	4	C. LOADING INSTRUCTIONS	16-17
C. GENERAL OPERATOR INFORMATION.....	4	D. PAYING OUT ROPE.....	18
D. GENERAL MAINTENANCE INFORMATION	4	6 APPENDICES	20
2 TECHNICAL SPECIFICATIONS	6	INSTRUCTIONS FOR MECHANICAL RELEASE	
A. OPERATIONAL CONDITIONS	6	OF AIR BRAKES.....	20
B. HYDRAULIC OIL	6	TO UN CAGE PARK BRAKE COMPRESSION	
3 SAFETY INFORMATION.....	7	SPRING (APPLY PARK BRAKE).....	21
A. SAFETY DEVICES	7	21032655 URW W/O OPTIONAL LEVELWIND.....	23
B. PERIODIC OPERATIONS	7	21032664 URW TRAILER W/O	
C. CAUTIONS AND WARNINGS	7	OPTIONAL LEVELWIND	24
D. PULLING ROPE FAILURE	7	21032460 HEAD, LEVELWIND-ASSY-URW24.....	25
E. ROTATING COMPONENT PINCH-POINT HAZARDS..	7	21032658 LEVELWIND KIT, REEL WINDER	26-27
F. CRUSHING INJURY WHEN LOADING OR		URW COMMON SKID	28-29
UNLOADING FOPE OR CONDUCTOR REELS.....	7	URW DRUM SHAFT	30-31
G. ELECTROSTATIC DISCHARGES	8	URW CHAIN DRIVE	32-33
H. INHALATION ENGINE EXHAUSTING GAS.....	8	21032658 DRIVE LEVELWIND CHAIN DRIVE	34-35
4 TRANSPORTING	8	URW HYDRAULICS.....	36-37
A. MACHINE LIFTING	8	21034215 MANIFOLD ASSY-REEL STAND	38
B. TRANSPORTING EQUIPMENT BY TRUCK.....	8	21032775 VALVE, CONTROL ASSY-REEL STANDS.....	39
C. TOWING	8	URW24 REEL TRAILER HOSES.....	40-41

General Information

1.

A. PRODUCT DESCRIPTION

The URW24 Reel Winder provides up to 19,000 lbs. of load capacity. It comes equipped with a hydraulic negative brake, reel bar, and storage basket.

The URW24 can also be used to transport steel conductor reels.

Available options include: 75 in fixed steel reel, detachable (split) steel reel, and anti-twist rope. Condux Tesmec, Inc. offers a complete line of stringing equipment.

B. SAFETY INFORMATION

- Only trained and qualified operators should use this machine.
- Qualified operators are those persons who have received training from the machine owner's company or, alternatively, from the manufacturer.
- This machine must be used only for the work it was designed for.
- This machine should not be used with unauthorized personnel on the work site.
- For any questions regarding operation, function, maintenance, etc., contact the After-sales Service of the manufacturer.

C. OPERATOR INFORMATION

- Operators must be aware of all local, state and federal safety regulations governing the use of this equipment.
- Operators must wear suitable clothing to reduce the possibility of entanglement in the machine's moving parts.

They should avoid the wearing of chains, and other jewelry for the same reason.
- Operators must use personal protective gear (i.e. gloves, boots, helmet, etc.).
- Operators must carefully follow hazard related instructions contained in this instruction manual or indicated on the machine.
- This machine's work area should be free as possible of oil or other liquid spills as well as materials or equipment that may be considered as an obstacle to proper operation.
- The operator must absolutely avoid the direct inhalation of the system's engine exhaust gas.

D. GENERAL MAINTENANCE INFORMATION

- It is absolutely forbidden to carry out any maintenance, or adjust any settings on this machine while pulling (except for those indicated in this manual).
- Before carrying out any maintenance stop the machine (except for those instances indicated otherwise in this manual) and wait till the system components subject to heating have cooled sufficiently

- All the maintenance performed on this machine must be carried out on a level surface and while the system is not under load.
- Authorized and trained personnel must perform all of the maintenance, both scheduled maintenance and repair.

Authorized and trained personnel are those persons who have received training on the maintenance of this equipment from the machine owner's company or, alternatively, from the manufacturer.

- Maintenance personnel must wear suitable clothes to reduce the possibility of entanglement in the machine's moving parts. They should avoid wearing of chains, and other jewelry for the same reason.
- Operators must use personal protective gear (i.e. gloves, boots, helmet, etc.).
- All maintenance operations, both scheduled and repair, must be carried out per the instructions included in this manual or following technical instructions provided by the manufacturer. Failure to follow these instructions relieves the manufacturer from any responsibility and voids their warranty.

Technical Specifications

2.

The Condux Tesmec URW24 Reel Winder is developed for transporting and winding steel rope or conductor when used in conjunction with a Condux Tesmec Puller or Puller/Tensioner which includes industry leading features like Self Acting Negative Brake and Advanced Hydraulic Systems. Triple axle reel trailer comes standard with wheel chocks, jack stand, electric brakes with breakaway kit and storage basket.

GENERAL SPECIFICATIONS REEL WINDER	
Reel OD Capacity	75 inches
Reel Width Capacity	52 inches
Weight Capacity	19,000 lbs
Max Rope OD	11/16 inches
Max Rope Capacity	18,000 feet
GVRW	45,000 lbs
Electrical System	12 Volt

A. OPERATIONAL CONDITIONS

Temperature: from 14°F (-10°C) to 104° (40°C).

Relevant moisture: from 30% to 90% ± 5%.

Weather conditions: any (in line with working conditions).

Natural and/or artificial lighting of the working site.

B. HYDRAULIC OIL

When using the machine always keep in mind operating conditions and their effect on the possibility of your exceeding the temperature limits for the system's hydraulic oil. Reference the Tensioner or Puller-Tensioner

Manual for temperature limits. The Condux Tesmec URW24 Reel Winder is developed for transporting and winding steel rope or conductor when used in conjunction with a Condux Tesmec Puller or Puller/Tensioner which includes industry leading features like Self Acting Negative Brake and Advanced Hydraulic Systems. Triple axle reel trailer comes standard with wheel chocks, jack stand, electric brakes with breakaway kit and storage basket.

Safety Information

3.

A. SAFETY DEVICES

This machine has been equipped with the following safety devices:

1. A mechanical negative safety brake that stops all movement if hydraulic pressure is lost
2. Where possible, guards and covers are provided to protect personnel from moving parts



!DANGER: Do not use this machine with protective guards removed or with damaged or disconnected safety devices.

B. PERIODIC OPERATIONS

Proper operation of safety systems should be verified daily.



!CAUTION: Any customer alterations to the provided safety devices relieves the manufacturer of any responsibility for any resulting damage of property or injury to personnel.

C. CAUTIONS & WARNINGS

When operating this machine users must be aware of other risks associated with the work for which the machine is intended.

D. PULLING ROPE FAILURE

May cause uncontrolled movement of the entire machine. Both this and the danger then presented by the pulling rope and/or conductor can cause serious injury or death.

To reduce operator exposure to these dangers owners must:

1. Regularly check the rope and replace it as soon as defects or signs of wear are detected
2. Assume only the recommended operation positions indicated in this manual

E. ROTATING COMPONENT PINCH-POINT HAZARDS

Due to the nature of the work being performed and important system functionality, it is not possible to fully guard all rotating components.

To minimize risks operators must:

1. Avoid any contact with the machine's rotating components
2. Follow the anchoring instructions described in this manual
3. Follow all recommendations in this manual regarding the use of personal safety equipment

F. CRUSHING INJURY WHEN LOADING OR UNLOADING ROPE OR CONDUCTOR REELS

Operators must know the proper methods for executing these tasks and should be trained to do them properly.

G. ELECTROSTATIC DISCHARGES

To reduce the risk presented by static electric charge build up in the ropes and conductors during pulling operations, the machine must be properly grounded.

To minimize these risks operators must:

1. Be trained in, and apply, the proper methods used to ground the machine during before using the machine.

H. INHALATION ENGINE EXHAUSTING GAS

To minimize these risks operators must:

1. Assume the proper operating position during operation and use appropriate safety equipment as needed.

Transporting

4.



!DANGER: Failure to follow the recommendations in this section may create a dangerous situation and/or damage to the machine. The manufacturer's warranty may also become void as a result.

A. MACHINE LIFTING

For lifting the machine, use only devices (overhead traveling cranes, lift trucks, ropes, cables, hooks, etc.) with a load capacity that meets or exceeds the weight to be lifted. Personnel should not be on the machine when it is lifted.

B. TRANSPORTING EQUIPMENT BY TRUCK

Attach the machine to the floor of a truck box or trailer using chains and hooks at the attachment points provided. Use wheel chocks, between wheels, nailed to floor to prevent rolling.

C. TOWING

This machine is designed for towing at highway speeds. No personnel may ride on the machine at any time while towing the machine at ANY speed.



!CAUTION: Always make sure to hook safety chains, attach lights & safety brake to transporting vehicle before towing machine.

Operating Procedures

5.



!WARNING: The “freewheel” mode is to be used only for positioning the reel/drum for loading and unloading. The reel stands are designed to slowly bleed off pressure from the negative brake for safety reasons. Using the freewheel mode for extended rotations of the reel/drum can result in damage to the negative brake and motor.

It is essential that the URW24 be properly set up before operation. Using the following procedure will allow the unit to be set up in a short period of time and yield optimum performance.

A. INITIAL SET-UP

1. Locate the URW24 20-30 feet behind the stringing equipment as the site allows.
2. Install the 4 wheel chocks provided with the URW24.
3. Securely anchor using the eyes located on the trailer frame (see Figure 1).
4. Properly ground the trailer using the ground connection on the tongue and/or rear bumper (see Figure 2).

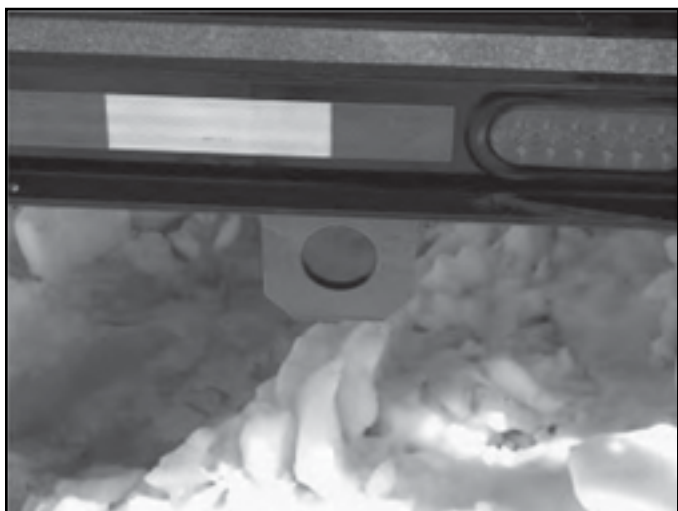


Figure 1



Figure 2

5. Connect the hydraulic hoses to the stringing machine (see Figure 3).



Figure 3

6. Secure the area between the stringing equipment and this reel trailer with Caution Tape provided or by other means to limit personal entry.

REEL BRAKE OPERATING INSTRUCTIONS

-WARNING-

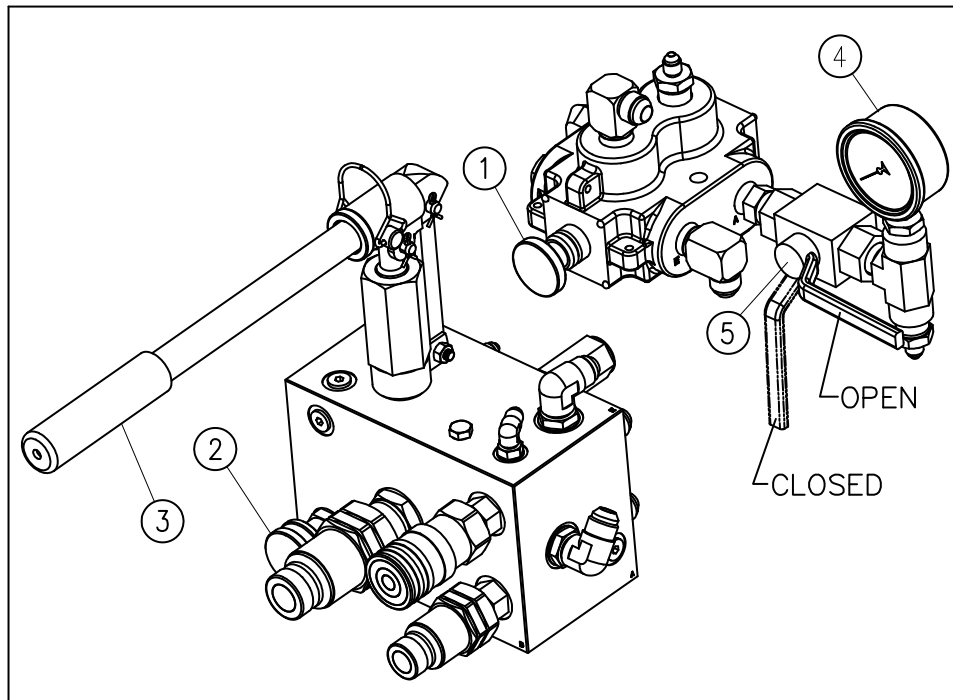
**DO NOT RELEASE THE BRAKE WITHOUT
PROPERLY SECURING THE ROPE OR CABLE**

LOAD AND UNLOAD REEL

1. INSURE THAT THE HYDRAULIC SUPPLY FROM THE STRINGING EQUIPMENT IS TURNED OFF OR DISCONNECTED.
2. PUSH THE SELECTOR VALVE HANDLE (ITEM 1) IN.
3. CLOSE THE VALVE (ITEM 2) BY TURNING THE KNOB CLOCKWISE UNTIL IT STOPS OR BOTTOMS OUT.
4. OPEN BALL VALVE (ITEM 5), SHOWN IN OPEN POSITION.
5. OPERATE THE PUMP HANDLE (ITEM 3) UNTIL THE PRESSURE ON GAUGE (ITEM 4) IS APPROXIMATELY 450 PSI. USE CAUTION AS THE BRAKE BEGINS TO RELEASE. AN UNBALANCED LOAD WILL CAUSE THE REEL TO TURN.
6. ROTATE THE REEL UNTIL THE "UP" LABEL ON THE DRIVE BAR IS IN THE 12 O'CLOCK POSITION. WHEN THE REEL IS IN THIS POSITION, TURN VALVE (ITEM 2) COUNTER CLOCKWISE A FEW TURNS TO RE-APPLY THE BRAKE. PRESSURE ON GAUGE (ITEM 4) WILL BE ZERO.

OPERATE REEL STAND

1. PULL OUT THE SELECTOR VALVE KNOB (ITEM 1) AND CLOSE BALL VALVE (ITEM 5).
2. REPLACE THE REEL AND RESUME STRINGING OPERATIONS.



21032542 REV3

1. Insure that the hydraulic supply from the stringing equipment is turned off.

2. Push in the Selector Valve Handle (see Figure 4).



Figure 4

3. Close the Valve by turning the Knob clockwise until it stops or bottoms out (see Figure 5).



Figure 5

4. Open the Ball Valve (in line with flow) as shown (see Figure 6).



Figure 6

5. Operate the Pump Handle (see Figure 7) until the pressure on the Gauge is approximately 450 PSI.



!CAUTION: As the brake releases, an unbalanced reel can cause the Reel to rotate unexpectedly.



Figure 7

6. Rotate the Reel until the “UP” label on the drive channel is in the 12 O’clock position. (See Figure 8).



Figure 8

7. When the Reel is in the “UP” position turn the Valve Knob counter-clockwise a few turns to re-apply the brake. Pressure on gauge should read zero (see Figure 9).



Figure 9

8. Remove Lock Pins from both Shaft Pins. Pull Shaft Pins out until they stop (see Figures 10 & 11). Lift Reel vertically out of the Shaft Supports. Replace Reel (see Reel Loading instructions). Push Shaft Pins in until they stop (bottom out). Replace Lock Pins.



Figure 10

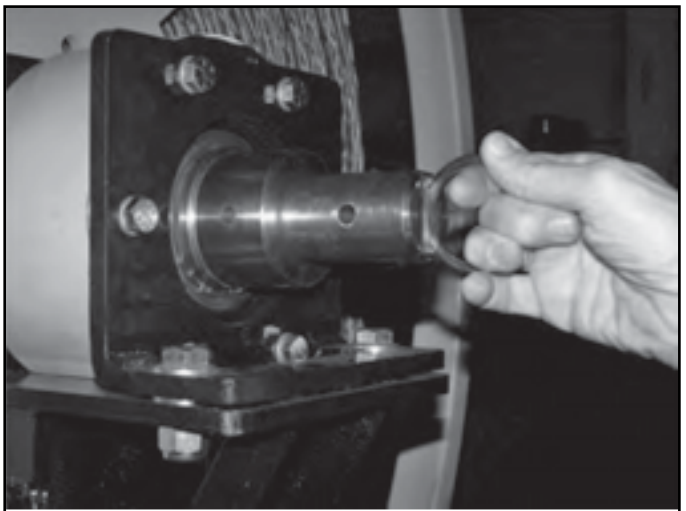


Figure 11

9. Pull out Selector Valve handle (see Figure 12).



Figure 12

10. Close Ball Valve
(perpendicular to flow)
as shown
(see Figure 13).



Figure 13

11. Stringing Operation can now be resumed.

C. LOADING INSTRUCTIONS

1. Insure both Shaft Supports are open to the top (see Figure 14).



Figure 14

2. Slide Collar over Reel Support Shaft (see Figure 15).



Figure 15

3. Insert Reel Support Shaft Through the center of the Reel (see Figure 16).



Figure 16

4. Make Sure to align Drive Pins with Drive Pin Holes (see Figure 17).



!CAUTION: HEAVY OBJECT
Two person lift required.



Figure 17

5. Slide second collar over Reel Support Shaft on opposite side into Reel Hub (see Figure 18). Slide Lock Collar onto Reel Support Shaft until flush against the collar. Use a 6 mm Allen Wrench to lock the collar to the Reel Support Shaft (see Figure 19).



Figure 18

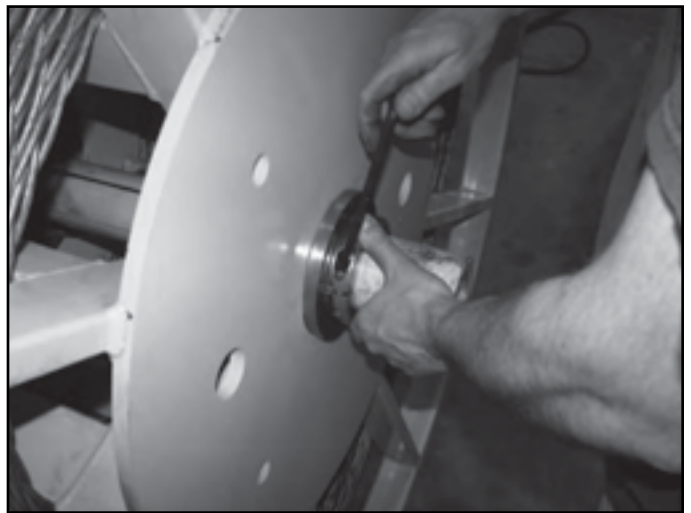


Figure 19

6. Make sure Shaft Supports are in the upright position and install Reel (see Figure 20).



Figure 20

D. PAYING OUT ROPE

1. Payout rope by hand. ***NOTE: DO NOT RUN rope through Level Wind at this time.**
2. To line up Level Wind with rope disengage yellow Lock Collar (see Figure 21). Pull black handle out and turn to position Level Wind (see Figure 22).



Figure 21



Figure 22

3. Once rope has been paid out to other side place rope in Level Wind (see Figures 23 and 24).



Figure 23

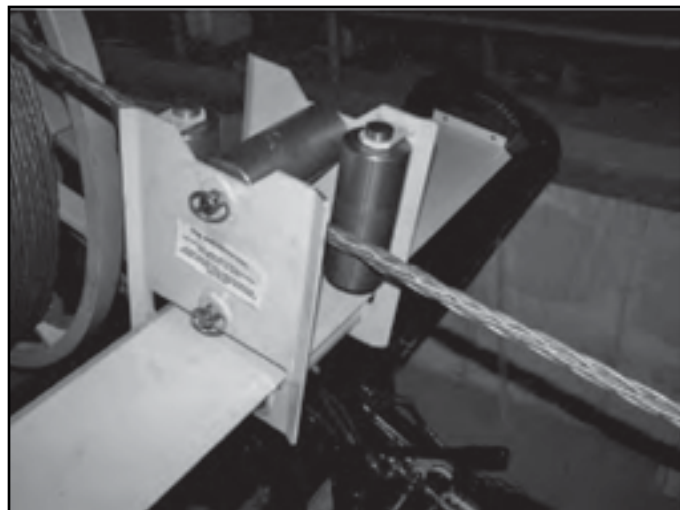
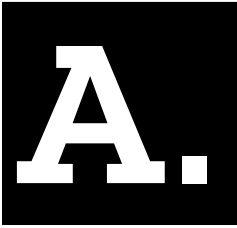


Figure 24

Mechanical Release of Air Brakes



APPENDIX



A. INSTRUCTIONS FOR MECHANICAL RELEASE OF AIR BRAKES

!DANGER – The following instructions only apply when spring is not pressurized. If air pressure is used to compress the spring, do not tighten release to more than finger tight. Torquing the release tool nut while the spring brake is pressurized can cause spring piston damage resulting in sudden release of the spring which could **CAUSE DEATH, SEVER PERSONAL INJURY AND/OR PROPERTY DAMAGE.** Air pressure must be release after caging, prior to any disassembly.

To CAGE Park Brake Compression Spring (Release Park Brake)

!Important – Always block wheels to prevent vehicle roll away when performing any brake maintenance.

!Important – Do not over torque release tool assembly. Over torquing release tool can cause spring piston damage. Torque to a maximum 55ft/lb, counterclockwise.

1. Turn release tool nut counter clockwise with hand wrench (**DO NOT USE HIGH SPEED AND/OR POWER DRIVEN IMPACT WRENCH**) and make certain push rod is retracting (see Figure 1).
2. This procedure will be made much easier if air pressure (100-120 PSIG) is used to collapse the compression spring before turning the release tool nut with a hand wrench. Proper caging will be complete when slight resistance is felt after turning the release tool nut. Release the air pressure after caging prior to any disassembly.

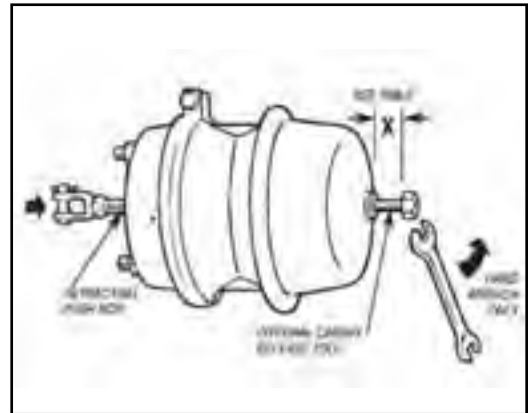


Figure 1

!Important – To ensure the power spring is fully caged, the release tool length (X dimension) (figure 1) should measure as shown in table below.

Stroke	“X” Minimum	“X” Maximum
2 1/2 IN	2.40 IN	2.56 IN
3 IN	2.90 IN	3.06 IN

Note: If dimension of release tool (X dimension) length is less than the minimum measurement, spring brake unit must be replace.

B. TO UN CAGE PARK BRAKE COMPRESSION SPRING (APPLY PARK BRAKE)

1. Turn release tool nut clockwise with hand wrench (**DO NOT USE HIGH SPEED AND/OR POWER DRIVEN IMPACT WRENCH**). This procedure will be made much easier if air pressure (100-120 PSIG) is used to collapse the compression spring
2. Turn release tool nut until contact is made with the chamber. Torque to 55 ft/lbs. Torque value is stamped on chamber (see Figure 2).

!DANGER – DISARM spring chamber before discarding old brake. To disarm use a suitable Safety Chamber. Failure to disarm assembly prior to disposal may, in time, result in spontaneous release of the spring chamber and its contents, which could CAUSE DEATH, SEVER PERSONAL INJURY AND/OR PROPERTY DAMAGE.

!DANGER – Use of an air gun, air ratchet or powered nut runner can cause internal damage to the actuator which will void the warranty.

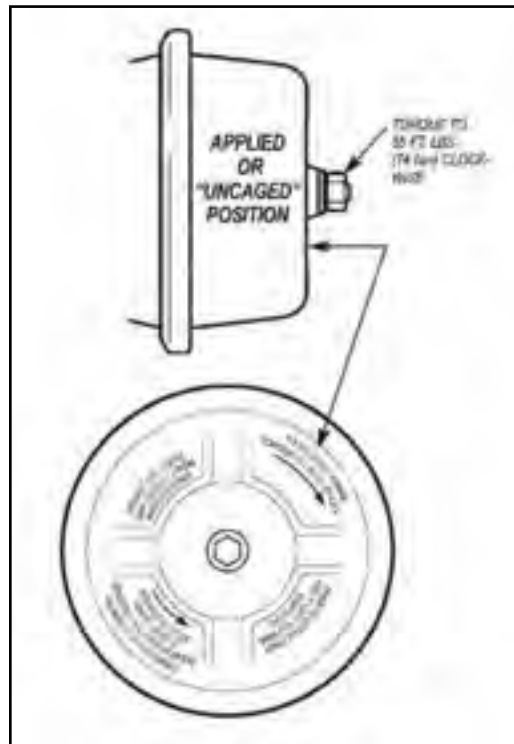


Figure 2



CONDUX TESMEC, INC. URW24 REEL TRAILER

21032650 - URW24 REEL SKID WITH LEVELWIND

21032655 - URW24 REEL SKID WITHOUT LEVELWIND

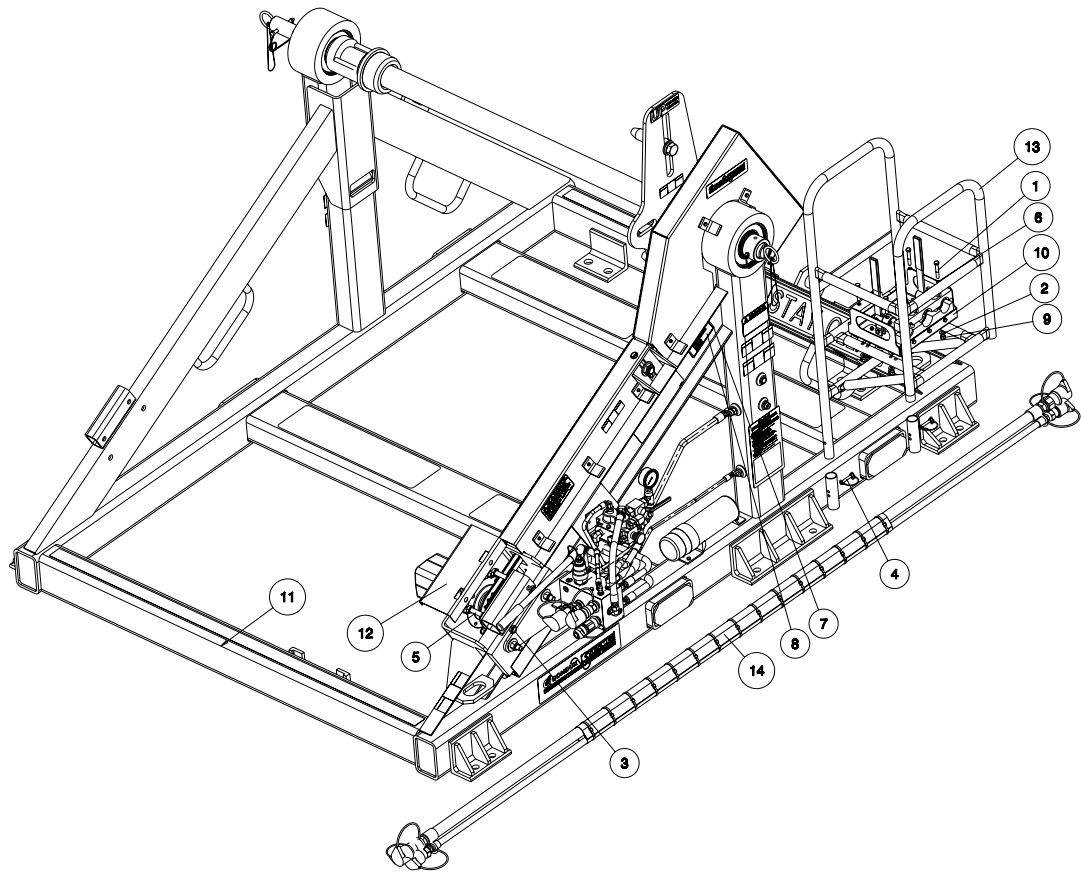
21032659 - URW24 REEL TRAILER WITH LEVELWIND

21032664 - URW24 REEL TRAILER WITHOUT LEVELWIND

PARTS MANUAL

CONDUX TESMEC, INC. URW24 REEL TRAILER

21032655 URW W/O OPTIONAL LEVELWIND

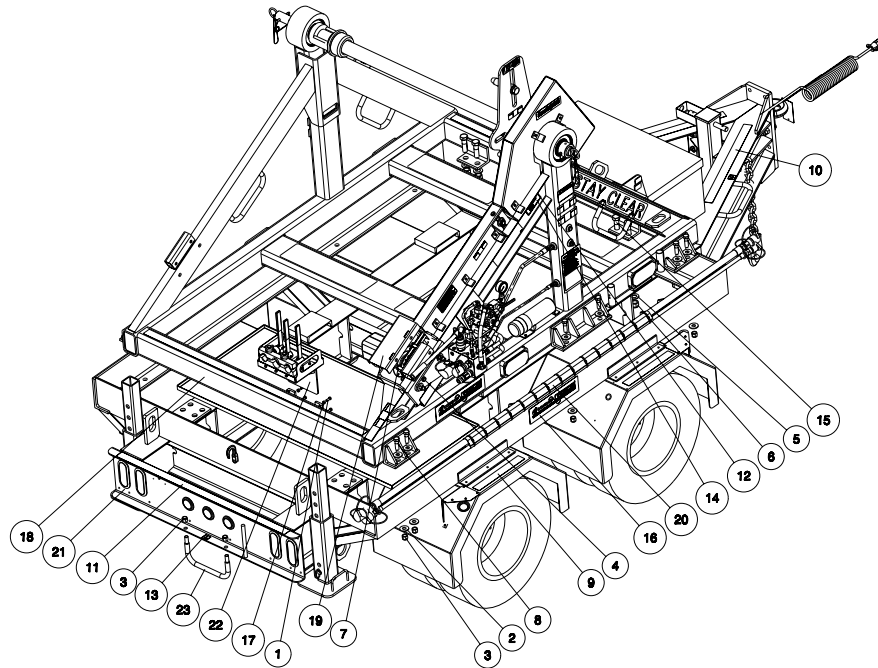


21032655 PARTS LIST FOR URW W/O OPTIONAL LEVELWIND

ITEM	PART NO	DESCRIPTION	QTY
1	02204301	CAPSRW 0.37-16X2.25 HHSTGR8 YZ	4
2	02288230	FLATWSHR 0.37 TYPEA-NARR ST CZ	4
3	02288421	NUT 0.62-11 NYLOC STGR2 THN CZ	2
4	02288856	PIN, QUICK .312 DIA X 1.75 LG	2
5	02288881	CAPSRW 0.62-11X3.50 HHSTGR5 CZ	2
6	02289480	O-RING, .070CS- .364ID BUNA-N	4
7	02289504	SCREW, DRIVE #04 X 0.375 SS	4
8	02289740	TAG, METAL SERIAL 2.50 X 5.00	1
9	12013500	NUT 0.37-16 NYLOC ST GR5 CZ	4
10	21031050	TOOL, HYD HOSE PRESSURE RELIEF	1
11	21032663	REEL WINDER, W/O LEVELWIND ASSY	1
12	21032675	GUARD, TOP MOTOR - URW	1
13	21032760	HOSE RACK WELD	1
14	21032790	HOSE BNDL ASSY-3X 50FT NPT FTG	1

CONDUX TESMEC, INC. URW24 REEL TRAILER

21032664 URW TRAILER W/O OPTIONAL LEVELWIND

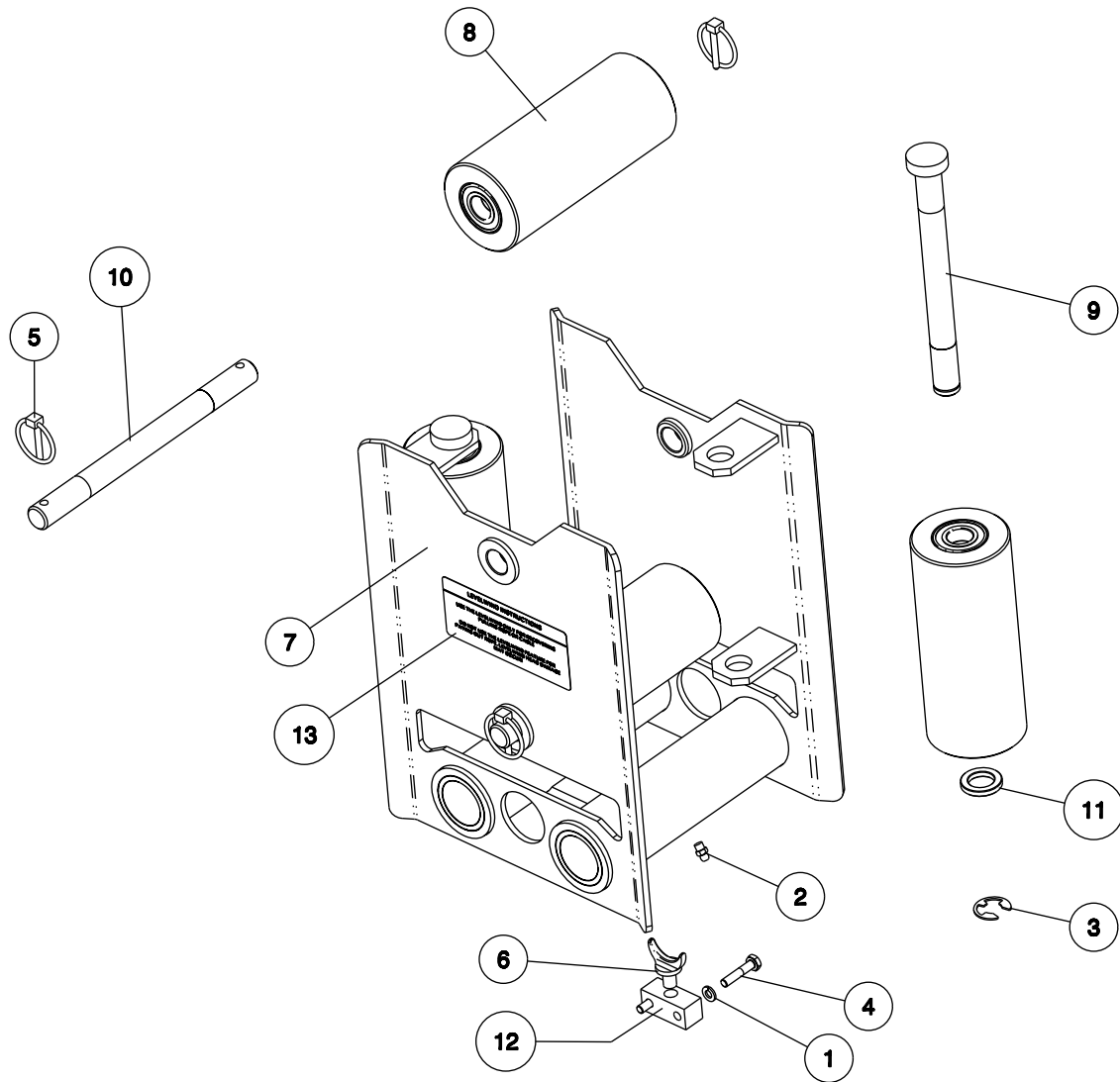


21032664 PARTS LIST FOR URW TRAILER W/O OPTIONAL LEVELWIND

ITEM	PART NO	DESCRIPTION	QTY
1	02020701	CAPSRW 0.37-16X1.00 HHSTGR5 CZ	4
2	02123904	FLATWSHR 0.75 TYPEA-WIDE ST CZ	24
3	02200600	NUT 0.75-10 NYLOC ST GR5 CZ	16
4	02288421	NUT 0.62-11 NYLOC STGR2 THN CZ	2
5	02288457	FLATWSHR 1.00 TYPEA-NARR ST CZ	8
6	02288826	NUT 1.00-08 NYLOC ST GR8 CZ	8
7	02288881	CAPSRW 0.62-11X3.50 HHSTGR5 CZ	2
8	02289477	CAPSRW 0.75-10X2.50 HHSTGR5 YZ	12
9	02289499	TAPE, ABRASIVE ANTISLIP 2IN - 15.00IN	4
10	02289499	TAPE, ABRASIVE ANTISLIP 2IN - 30.00IN	2
11	02289499	TAPE, ABRASIVE ANTISLIP 2IN - 50.00IN	1
12	02289504	SCREW, DRIVE #04 X 0.375 SS	4
13	02289640	LABEL, GROUND-ISO 1.5 X 1.5	2
14	02289740	TAG, METAL SERIAL 2.50 X 5.00	1
15	02289919	CAPSRW 1.00-08X3.50 HHSTGR8 YZ	8
16	02290120	DECAL, CONDUX/TESMEC 16 X 04	2
17	12001302	NUT 0.37-16 HEX ST GR5 CZ	4
18	21032663	REEL WINDER, W/O LEVELWIND ASSY	1
19	21032675	GUARD, TOP MOTOR - URW	1
20	21032790	HOSE BNDL ASSY-3X 50FT NPT FTG	1
21	21033802	TRAILER, RW23 REEL WINDER	1
22	21033865	TOOL, PRESS RELIEF W/MOUNT-ASSY	1
23	21033919	BAR, FORMED GROUNDING-BRASS	2

CONDUX TESMEC, INC. URW24 REEL TRAILER

21032460 HEAD, LEVELWIND-ASSY-URW24

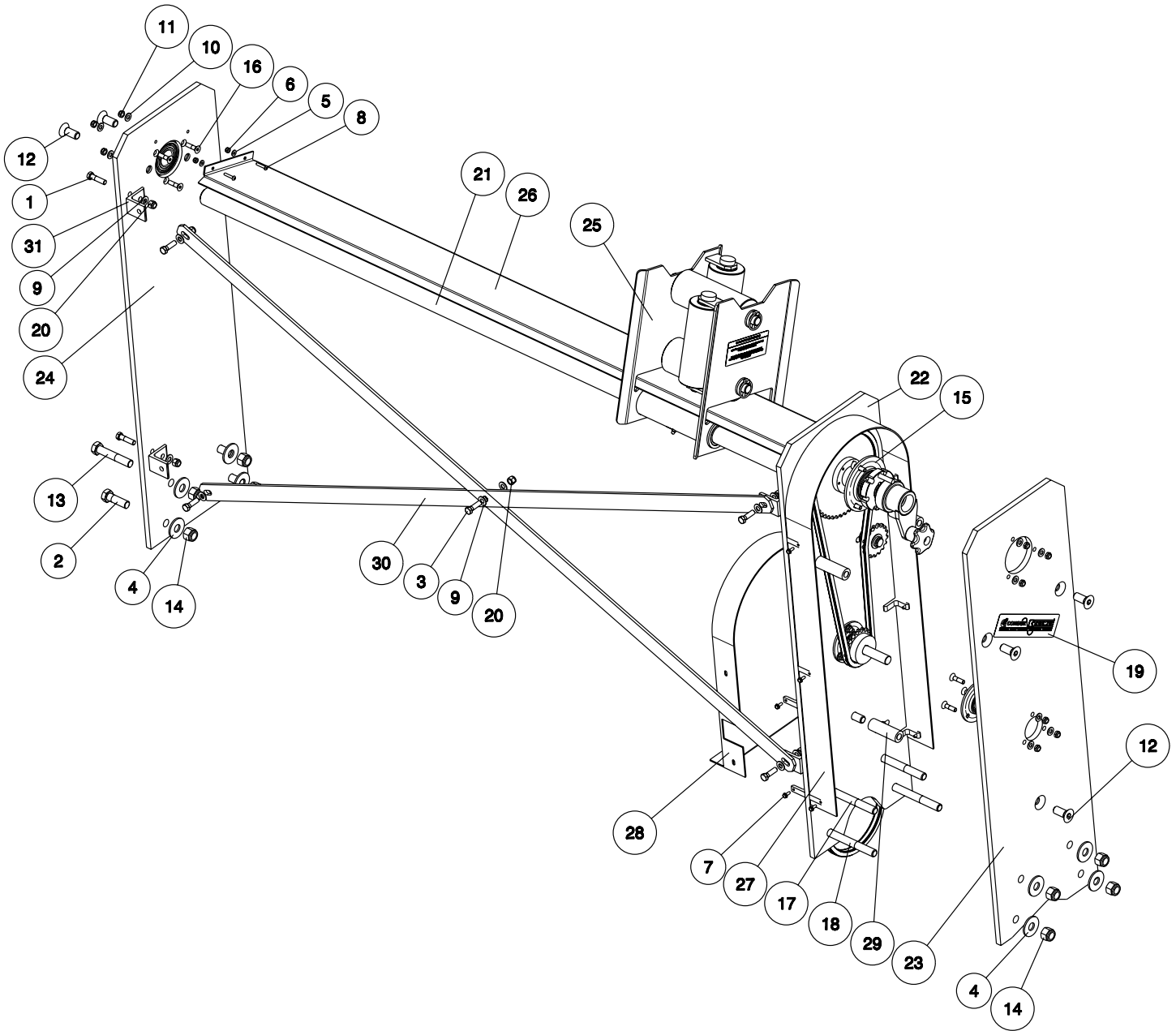


21032460 PARTS LIST HEAD, LEVELWIND-ASSY-URW24

ITEM	PART NO	DESCRIPTION	QTY
1	02021501	LOCKWSHR 0.25 REGULAR ST CZ	2
2	02222000	ZERK, GREASE, SHORT STR 1/4-28	2
3	02235900	RING, RETAINING .750 EXT(1000)	2
4	02288426	CAPSRW 0.25-20X1.25 HHSTGR5 CZ	2
5	02289102	PIN, QUICK LOCK 3/16" X 1-1/4"	4
6	21011189	PAWL ,BRNZ FNGR D00-00197	1
7	21032461	PLATE, LEVELWIND HEAD-WELDMENT	1
8	21032467	ROLLER, LEVELWIND GUIDE-ASSY	4
9	21032469	SHAFT, VERT GUIDE ROLLER-URW24	2
10	21032470	SHAFT, HORZ GUIDE ROLLER-URW24	2
11	21032471	BUSHING, VERTICAL ROLLER-URW24	2
12	21032472	BLOCK, LEVELWIND FINGER MNT	1
13	21032547	LABEL, INST-LEVEL WIND URW24	2

CONDUX TESMEC, INC. URW24 REEL TRAILER

21032658 LEVELWIND KIT, REEL WINDER



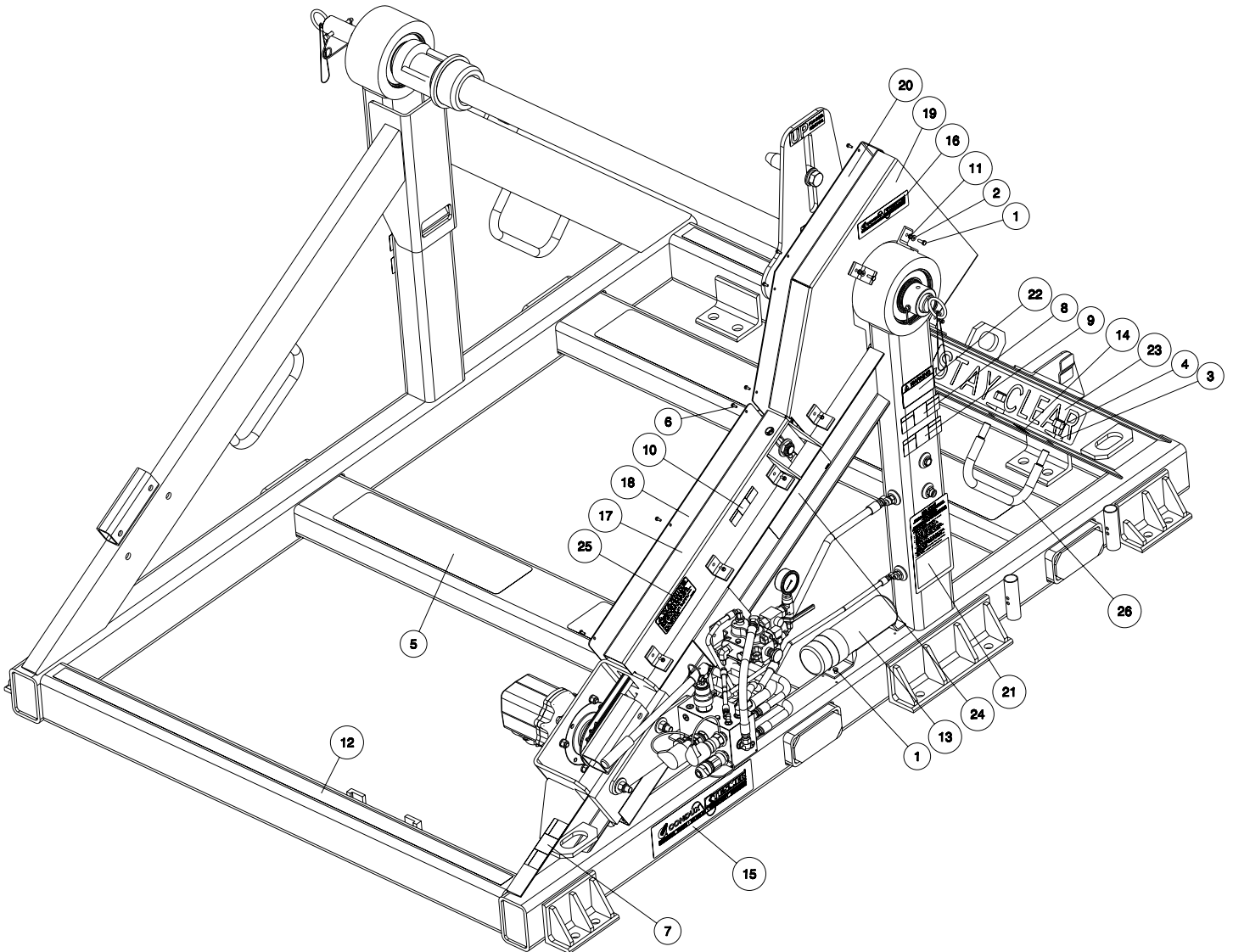
CONDUX TESMEC, INC. URW24 REEL TRAILER

21032658 PARTS LIST FOR LEVELWIND KIT, REEL WINDER

ITEM	PART NO	DESCRIPTION	QTY
1	02008901	CAPSRW 0.37-16X1.50 HHSTGR5 CZ	4
2	02026201	CAPSRW 0.62-11X2.00 HHSTGR8 YZ	2
3	02032000	CAPSRW 0.37-16X1.25 HHSTGR8 YZ	5
4	02047002	FLATWSHR 0.62 TYPEA-WIDE ST CZ	8
5	02178601	FLATWSHR #10 TYPEA- ST CZ	4
6	02186901	NUT #10-24 NYLOC ST GR2 CZ	4
7	02266400	CAPSRW #10-24X0.50 HFSTGR5 CZ	10
8	02269778	CAPSRW #10-24X1.00 BHSTALY PL	4
9	02288230	FLATWSHR 0.37 TYPEA-NARR ST CZ	14
10	02288231	FLATWSHR 0.31 TYPEA-NARR ST CZ	12
11	02288417	NUT 0.31-18 NYLOC STGR2 THN CZ	12
12	02288827	CAPSRW 0.62-11X1.50 CSSTALY CZ	10
13	02288881	CAPSRW 0.62-11X3.50 HHSTGR5 CZ	2
14	02289448	NUT 0.62-11 NYLOC ST GR8 YZ	8
15	02289575	BEARING, STAMPED FLNG 1 3/8 DIA	2
16	02289656	CAPSRW 0.31-18X1.25 CSSTALY CZ	12
17	02290040	CAPSRW 0.62-11X5.00 CSSTALY CZ	2
18	02290043	CAPSRW 0.62-11X5.50 CSSTALY CZ	2
19	02290121	DECAL, CONDUX/TESMEC 08 X 02	2
20	12013500	NUT 0.37-16 NYLOC ST GR5 CZ	9
21	21032452	SHAFT, GUIDE-LEVELWIND URW24	2
22	21032453	PLATE, INNER LVLWIND-WELD-URW24	1
23	21032456	PLATE, OUTER LEVELWIND LH URW24	1
24	21032457	PLATE, OUTER LEVELWIND RH URW24	1
25	21032460	HEAD, LEVELWIND-ASSY-URW24	1
26	21032480	GUARD, LEVELWIND SCREW URW24	1
27	21032491	GUARD, UPPER CHAIN LVLWIND-URW24	1
28	21032492	GUARD, LOWER CHAIN LVLWIND-URW24	1
29	21032570	SPACER, DRIVE PLATES-URW24	3
30	21032840	BRACE, LEVELWIND CROSS SUPPORT	2
31	21032842	ANGLE, SUPPORT BRACE-LEVELWIND	4

CONDUX TESMEC, INC. URW24 REEL TRAILER

URW COMMON SKID



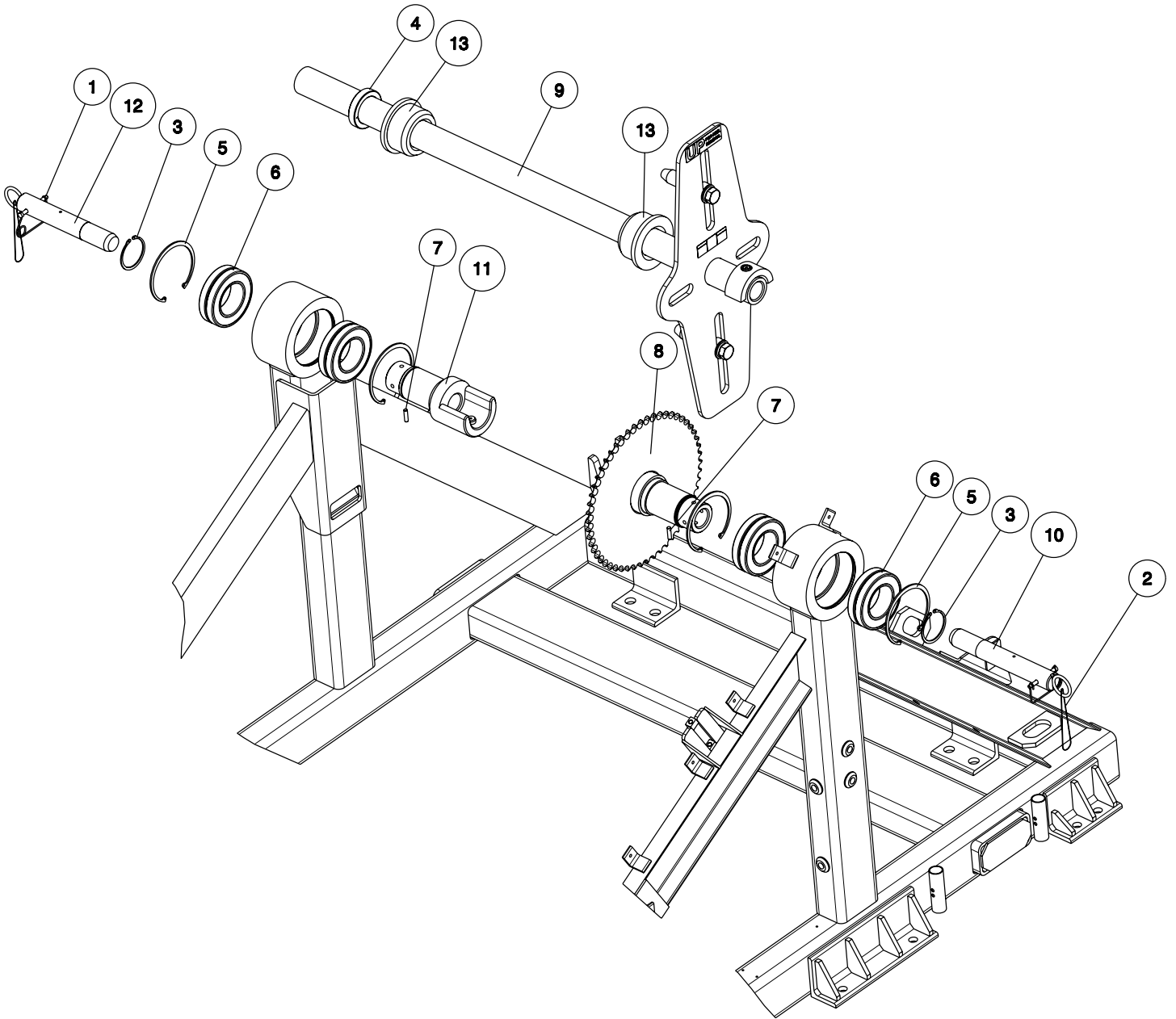
CONDUX TESMEC, INC. URW24 REEL TRAILER

PARTS LIST FOR URW COMMON SKID

ITEM	PART NO	DESCRIPTION	QTY
1	02021400	CAPSRW 0.25-20X0.75 HHSTGR5 CZ	5
2	02102001	FLATWSHR 0.25 TYPEA-NARR ST CZ	2
3	02131500	WASHER, BEVELED 0.75 BOLT-HG	6
4	02200600	NUT 0.75-10 NYLOC ST GR5 CZ	6
5	02266200	STRIP, ANTI-SLIP FO TRAILER	4
6	02266400	CAPSRW #10-24X0.50 HFSTGR5 CZ	22
7	02269303	LABEL, WARNING-HYD FLUID 2 X 6	1
8	02269603	LABEL, WARNING-CAPSTN CATCH 2X6	2
9	02269604	LABEL, WARNING-CABLE TENSION 2X6	2
10	02269731	LABEL, WARNING-STAY CLR 1.5X4.5	1
11	02288416	NUT 0.25-20 NYLOC STGR2 THN CZ	2
12	02289499	TAPE, ABRASIVE ANTISLIP 2IN	2
13	02289639	HOLDER, MANUAL-WEATHERPROOF	1
14	02289640	LABEL, GROUND-ISO 1.5 X 1.5	3
15	02290120	DECAL, CONDUX/TESMEC 16 X 04	2
16	02290121	DECAL, CONDUX/TESMEC 08 X 02	1
17	21032501	GUARD, DRIVE CHAIN-LOWER URW24	1
18	21032502	GUARD, DRIVE-LOWER COVER URW24	1
19	21032503	GUARD, DRIVE CHAIN-UPPER URW24	1
20	21032504	GUARD, DRIVE-UPPER COVER URW24	1
21	21032542	LABEL, INST-REEL LOADING URW24	1
22	21032543	LABEL, WARNING-DRUM PINS URW24	2
23	21032546	LABEL, STAY CLEAR URW24	2
24	21032548	LABEL, INST-OPER URW24	1
25	21032789	LABEL, WARNING-FREEWHEEL	1
26	21033919	BAR, FORMED GROUNDING-BRASS	3

CONDUX TESMEC, INC. URW24 REEL TRAILER

URW DRUM SHAFT



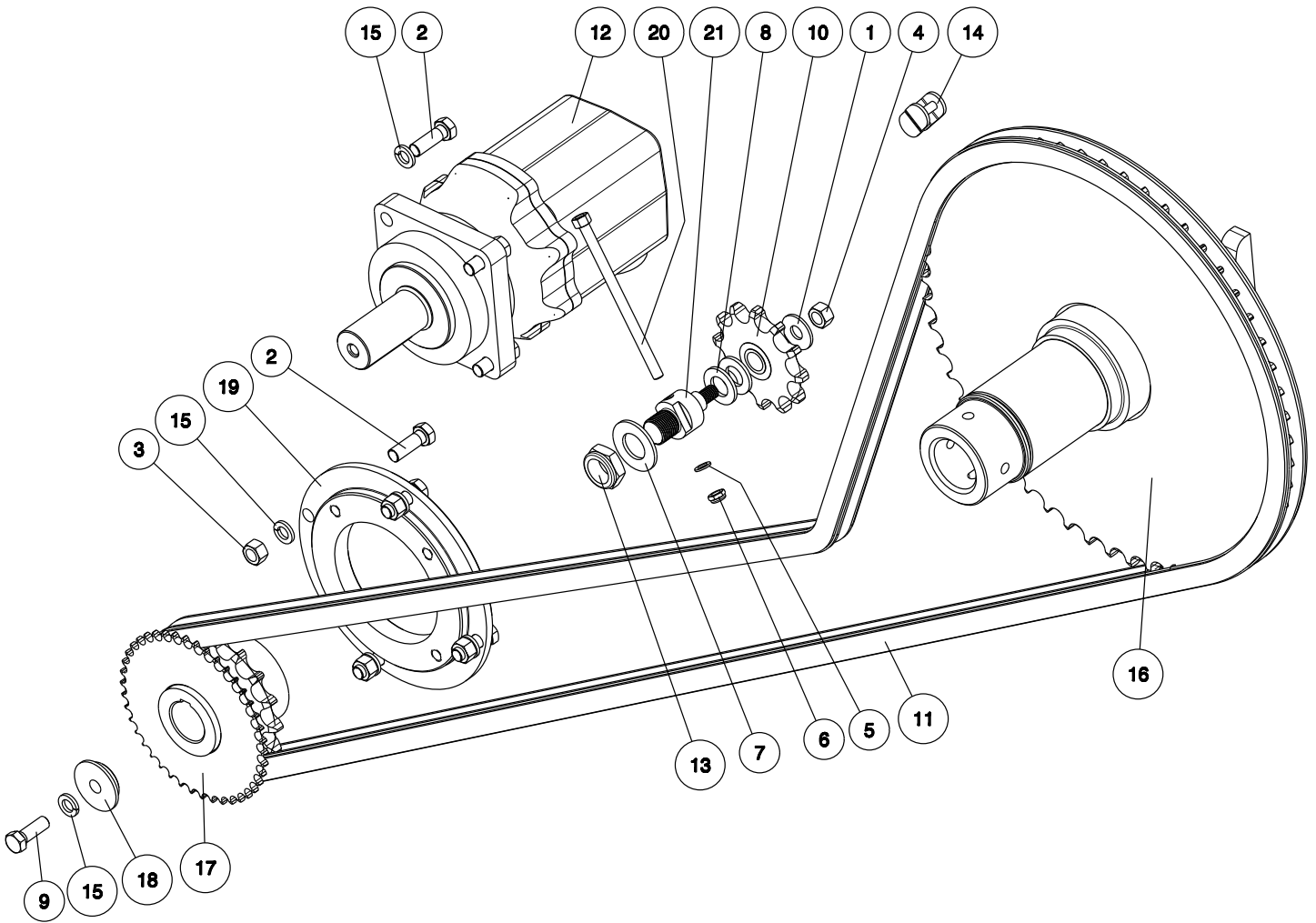
CONDUX TESMEC, INC. URW24 REEL TRAILER

PARTS LIST FOR URW DRUM SHAFT

ITEM	PART NO	DESCRIPTION	QTY
1	02281600	PIN, SNAP LOCK .38 DIA, 3.50LG	2
2	02288876	LANYARD, ALL UNIVER COUPLINGS	2
3	02289592	RING, RETAINING 3.500 EXT(3100)	2
4	02289597	COLLAR, SHAFT CLAMP 3IN ST CZ	1
5	02289705	RING, RETAINING-INTERNAL 6.50	4
6	02290657	BEARING, SRB 90 ID 160MM OD SLD	4
7	08610659	PIN, DOWEL .375 DIA-1.500 LONG	2
8	21032498	SHAFT, DRUM WELD-DRV SIDE URW24	1
9	21032505	SHAFT, DRUM WELD URW24	1
10	21032514	PIN, DRUM SHAFT-WELD URW24	1
11	21032544	SHAFT, DRUM WELD-NONDRIVE URW24	1
12	21032558	PIN, DRUM SHFT-WLD NONDRV URW24	1
13	21032592	HUB, DRUM PILOT-NYLON URW	2

CONDUX TESMEC, INC. URW24 REEL TRAILER

URW CHAIN DRIVE



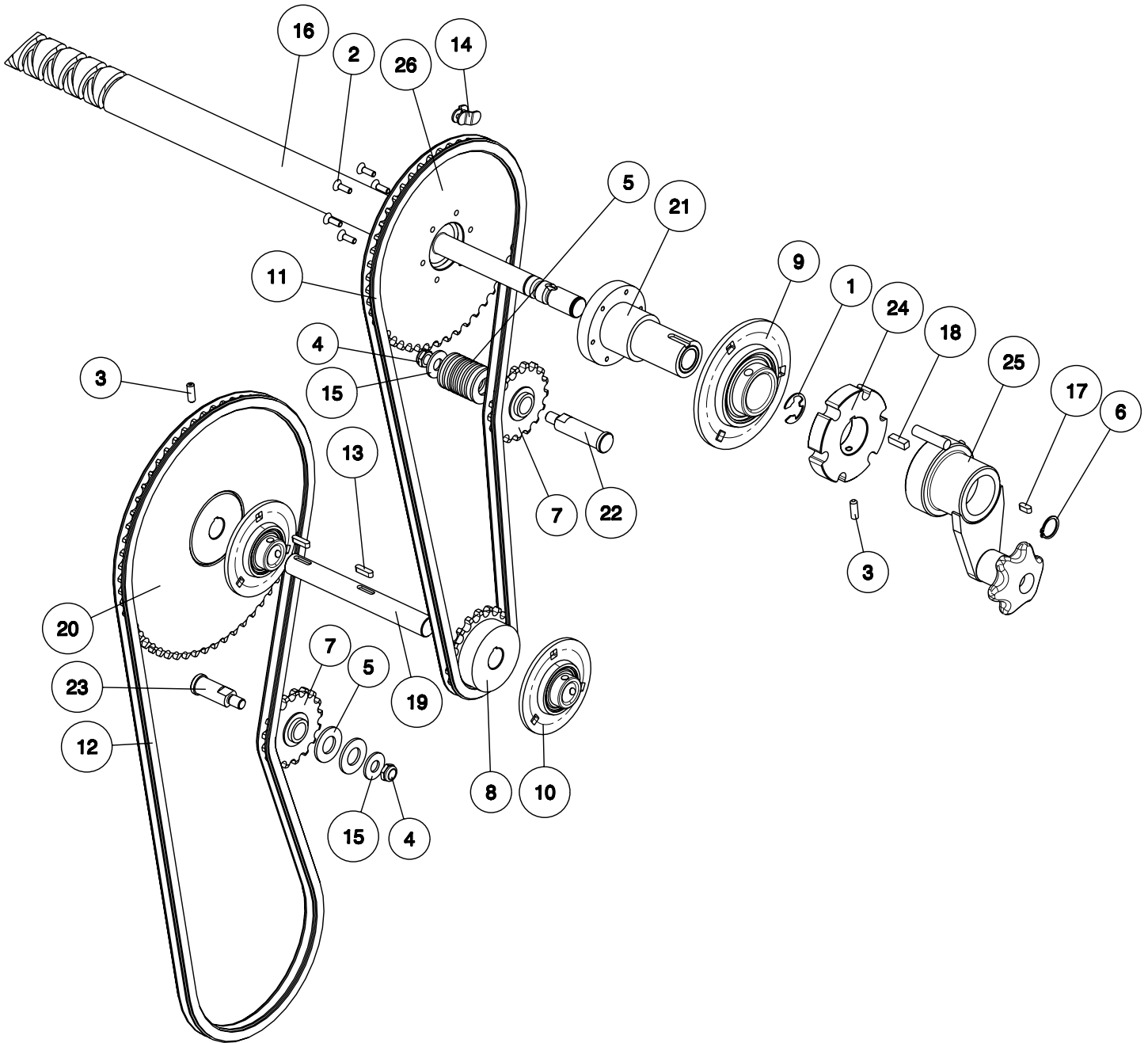
CONDUX TESMEC, INC. URW24 REEL TRAILER

PARTS LIST FOR URW CHAIN DRIVE

ITEM	PART NO	DESCRIPTION	QTY
1	02021301	FLATWSHR 0.50 TYPEA-WIDE ST CZ	1
2	02038401	CAPSRW 0.50-13X1.50 HHSTGR8 YZ	8
3	02125101	NUT 0.50-13 HEX ST GR5 CZ	4
4	02125104	NUT 0.50-13 HEX SS 316	1
5	02288262	FLATWSHR 0.37-.62-.06THK NYLON	1
6	02288419	NUT 0.37-16 NYLOC STGR2 THN CZ	1
7	02288457	FLATWSHR 1.00 TYPEA-NARR ST CZ	1
8	02288518	FLATWSHR 0.75 TYPEA-NARR ST CZ	2
9	02289525	CAPSRW M12-1.75X 35 HHST 8.8CZ	1
10	02289585	SPROCKET, IDLER HB80A12 X 3/4	1
11	02289586	CHAIN, #80-1PTCH 155PTCHS SGL	1
12	02289680	BRAKE ASSY W/MOTOR-PAINTED	1
13	02289734	NUT 1.00-14 NYLOC STGR2 THN CZ	1
14	02290187	LINK, HALF #80-1PITCH SINGLE	1
15	12010600	LOCKWSHR 0.50 REGULAR ST CZ	9
16	21032498	SHAFT, DRUM WELD-DRV SIDE URW24	1
17	21032571	HUB, MAIN DRIVE-WELD(DANFOSS)	1
18	21032573	RETAINER, DRV SPROCKET-DANFOSS	1
19	21032574	ADAPTER ,BRAKE MOUNT-(DANFOSS)	1
20	21032577	SCREW, TAKE-UP ADJUSTMENT	1
21	21032584	SHAFT, TAKE-UP DRIVE CHAIN-1IN	1

CONDUX TESMEC, INC. URW24 REEL TRAILER

21032658 DRIVE LEVELWIND CHAIN DRIVE



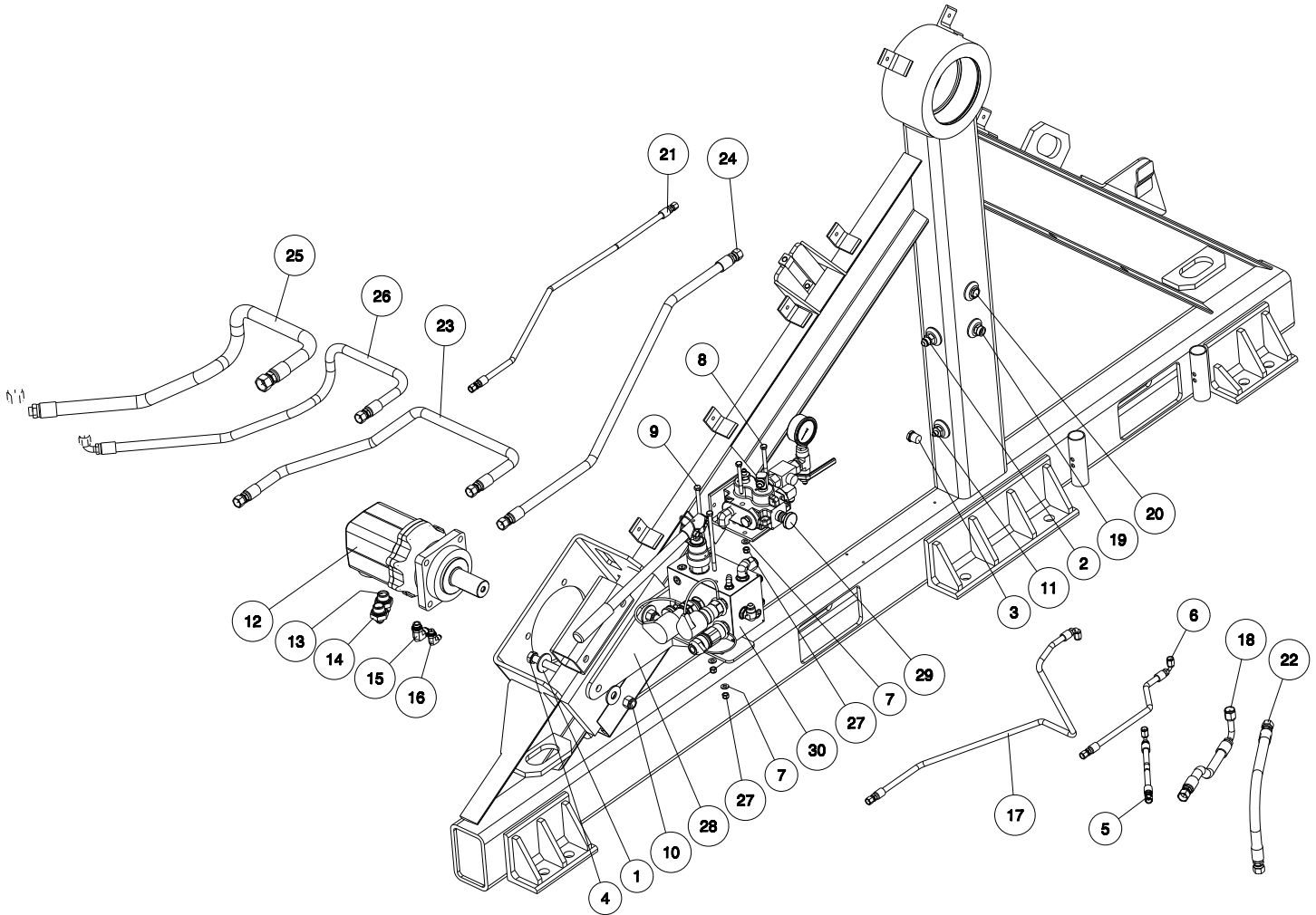
CONDUX TESMEC, INC. URW24 REEL TRAILER

21032658 PARTS LIST FOR DRIVE LEVELWIND CHAIN DRIVE

ITEM	PART NO	DESCRIPTION	QTY
1	02235900	RING, RETAINING .750 EXT(1000)	1
2	02288209	CAPSRW #10-24X0.62 CSSTALY PL	6
3	02288364	SETSCREW, .250-20- .75-HXSO SS	2
4	02288419	NUT 0.37-16 NYLOC STGR2 THN CZ	2
5	02288454	FLATWSHR 0.62 TYPEA-NARR ST CZ	10
6	02289570	RING, RETAINING .750 EXT(3100)	1
7	02289571	SPROCKET, IDLER HB40A17	2
8	02289572	SPROCKET, 40B19 X 3/4IN BORE	1
9	02289575	BEARING, STAMPED FLNG 1 3/8 DIA	1
10	02289576	BEARING, STAMPED FLNG 3/4 DIA	2
11	02289581	CHAIN, #40-1/2PTCH 104PTCHS SGL	1
12	02289582	CHAIN, #40-1/2PTCH 124PTCHS SGL	1
13	02289619	KEY, SQ 0.187 X 0.75 CF 1018	2
14	02290186	LINK, HALF #40-1/2PITCH SINGLE	1
15	12000901	FLATWSHR 0.37 TYPEA-WIDE ST CZ	2
16	21032450	SHAFT, LEVELWIND URW24	1
17	21032451	KEY, SQ 0.187 X 0.50 CF 1018	1
18	21032458	KEY, SQ 0.250 X 0.75 CF 1018	1
19	21032473	SHAFT, LOWER DRV LVLWIND URW24	1
20	21032474	SPROCKET 40B60 WELD URW24	1
21	21032476	HUB, DRIVE SPROCKET-40B42 URW24	1
22	21032478	SHAFT, IDLER UPPER LVLWIND URW24	1
23	21032479	SHAFT, IDLER LOWER LVLWIND URW24	1
24	21032481	HUB, MANUAL DRIVE-LVLWIND URW24	1
25	21032486	HANDLE, LEVELWIND WELD URW24	1
26	21032557	SPROCKET, DRIVE 48TOOTH -URW24	1

CONDUX TESMEC, INC. URW24 REEL TRAILER

URW HYDRAULICS



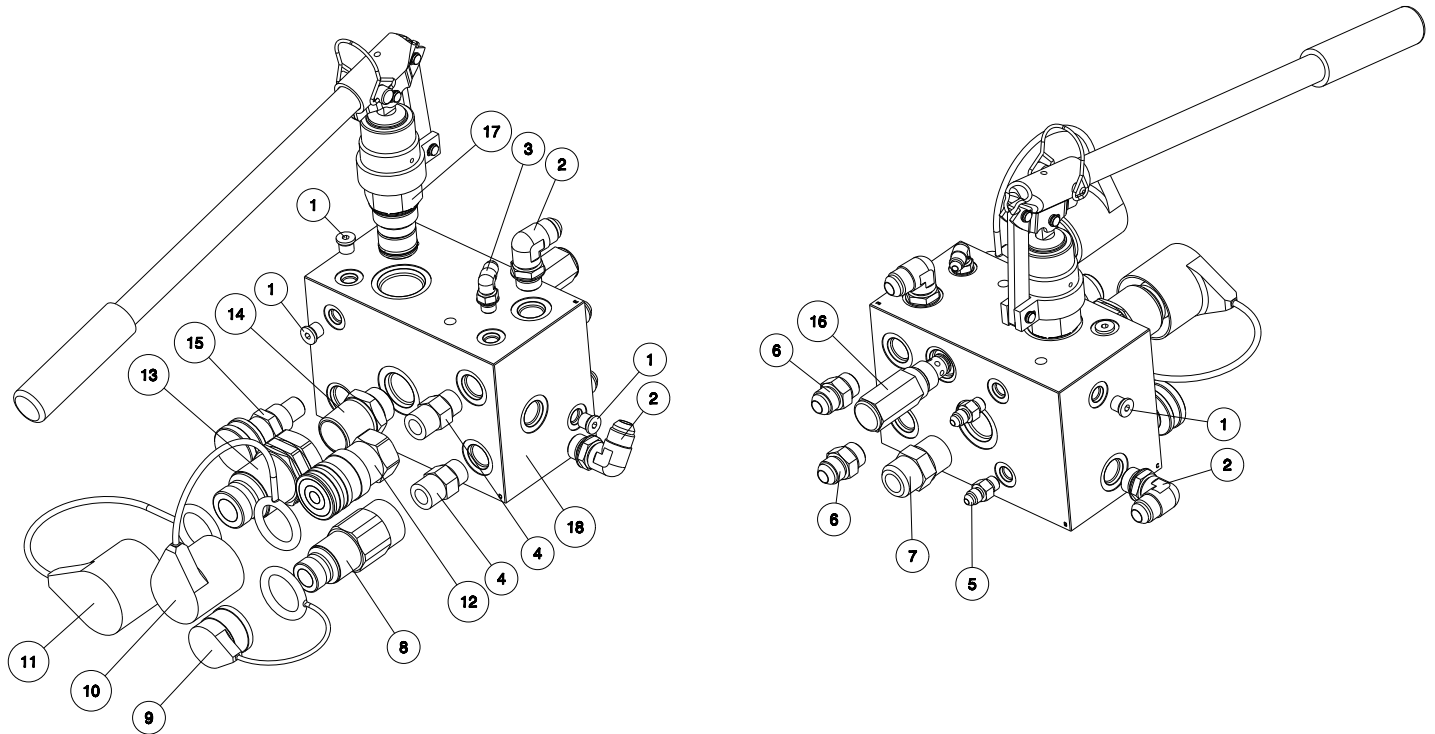
CONDUX TESMEC, INC. URW24 REEL TRAILER

PARTS LIST FOR URW HYDRAULICS

ITEM	PART NO	DESCRIPTION	QTY
1	02047002	FLATWSHR 0.62 TYPEA-WIDE ST CZ	4
2	02053800	FTG, HYD 08-NPT_M ;08-JIC	1
3	02198000	FTG, HYD 08-NPT_M ;PLUG-HEX	1
4	02263600	CAPSRW 0.62-11X5.00 HHSTGR5 CZ	2
5	02269754	HOSE 04X 12.0-04SW -04SW90 3K	1
6	02269755	HOSE 04X 16.0-04SW -04SW90 3K	1
7	02288231	FLATWSHR 0.31 TYPEA-NARR ST CZ	4
8	02288430	CAPSRW 0.31-18X3.00 HHSTGR5 CZ	2
9	02288492	CAPSRW 0.31-18X6.00 HHSTGR5 CZ	2
10	02289448	NUT 0.62-11 NYLOC ST GR8 YZ	2
11	02289609	FTG, HYD 08 NPT_M ;04-M JIC	1
12	02289680	BRAKE ASSY W/MOTOR-PAINTED	1
13	02289681	FTG, HYD 12 JIC;12-BSPP W/SEAL	1
14	02289682	FTG, HYD 08 JIC;12-BSPP W/SEAL	1
15	02289683	FTG, HYD 08 JIC;06-BSPP 90-SEAL	1
16	02289684	FTG, HYD 04 JIC;04-BSPP 90-SEAL	1
17	02289689	HOSE 04X 40.0-04SW -04SW90 3K	1
18	02289690	HOSE 08X 14.0-08SW -08SW90 3K	1
19	02289711	GAUGE, SITE-GLASS 1/2-14NPT	1
20	02289712	FTG, HYD 08 NPT BREATHER VEN	1
21	02289722	HOSE 04X 36.0-04SW -04SW 3K	1
22	02289723	HOSE 08X 22.0-08SW -08SW 3K	1
23	02289724	HOSE 08X 40.0-08SW -08SW 3K	1
24	02289724	HOSE 08X 40.0-08SW -08SW 3K	1
25	02289751	HOSE 12X 40.0-12SW -12SW90 3K	1
26	02289752	HOSE 08X 40.0-08SW -08SW90 3K	1
27	12002300	NUT 0.31-18 NYLOC ST GR5 CZ	4
28	21032676	BRACKET, MANIFOLD MTG-WELD URW	1
29	21032775	VALVE, CONTROL ASSY-REEL STANDS	1
30	21034215	MANIFOLD ASSY-REEL STAND	1

CONDUX TESMEC, INC. URW24 REEL TRAILER

21034215 MANIFOLD ASSY-REEL STAND

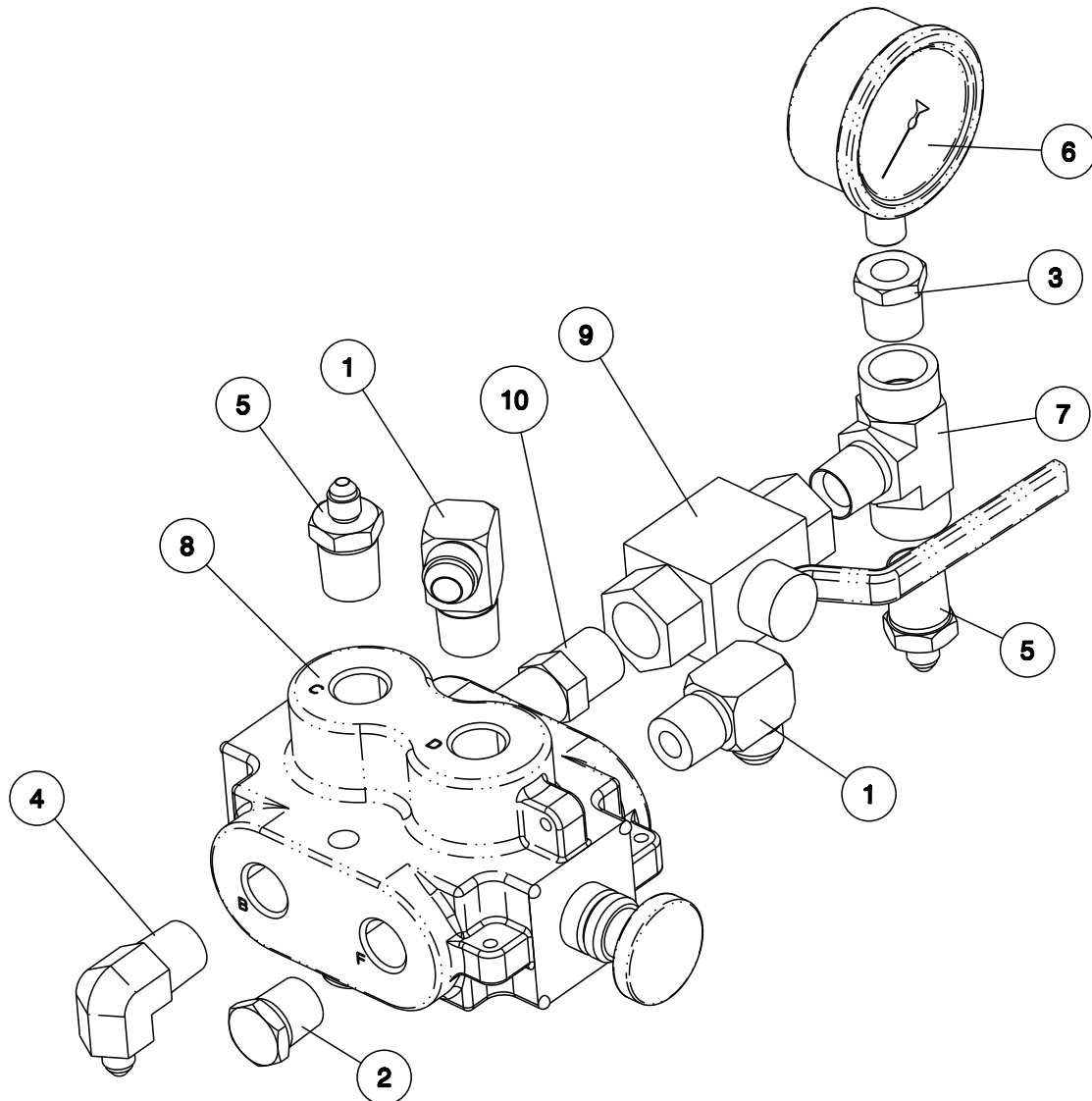


21034215 PARTS LIST MANIFOLD ASSY-REEL STAND

ITEM	PART NO	DESCRIPTION	QTY
1	02045904	FTG, HYD 04 O-RING;PLUG	5
2	02094200	FTG, HYD 08 O-RING;08-JIC 90'	3
3	02127000	FTG, HYD 04 O-RING;04-JIC 90'	1
4	02269600	FTG, HYD 08 O-RING;08-NPT_M	2
5	02269692	FTG, HYD 04 O-RING;04-JIC	2
6	02288687	FTG, HYD 08 O-RING;08-JIC	2
7	02288740	FTG, HYD 12 O-RING;12-JIC	1
8	02289615	COUPLER, QD-M 08BODY X 08NPT	1
9	02289617	CAP, QD NIPPLE (M)-1/2IN BODY	1
10	02289626	CAP, QD COUPLER (F)-1/2IN BODY	1
11	02289627	CAP, QD NIPPLE (M)-3/4IN BODY	1
12	02289632	COUPLER, QD-FM 08BODY X 08NPT	1
13	02289715	COUPLER, QD-M 12BODY X 16NPT	1
14	02289716	FTG, HYD 12 O-RING;16 NPT	1
15	02289718	VALVE, CARTRIDGE-NEEDLE VALVE	1
16	02290036	VALVE, CARTRIDGE-RELIEF 750PSI	1
17	21034213	VALVE, HAND PUMP-ASSY	1
18	21034214	BLOCK, MANIFOLD REEL STAND	1

CONDUX TESMEC, INC. URW24 REEL TRAILER

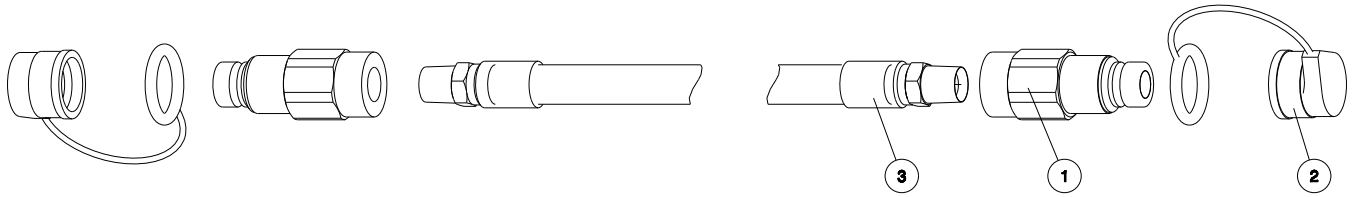
21032775 VALVE, CONTROL ASSY-REEL STANDS



21032775 PARTS LIST FOR VALVE, CONTROL ASSY-REEL STANDS

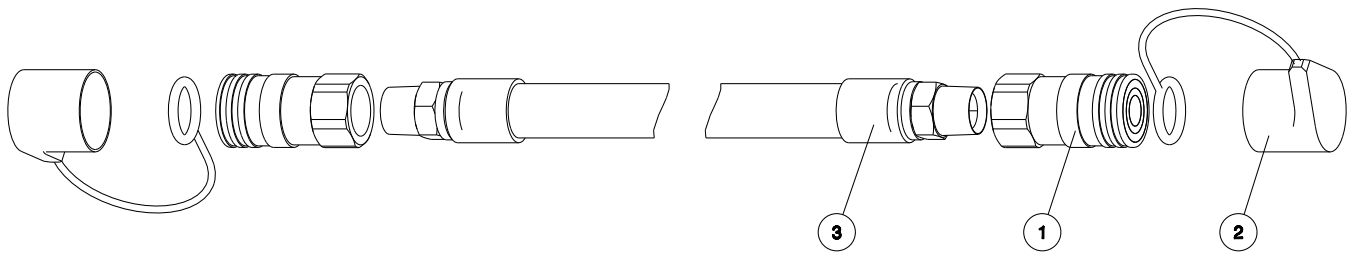
ITEM	PART NO	DESCRIPTION	QTY
1	02093600	FTG, HYD 08-NPT_M ;08-M JIC 90'	2
2	02198000	FTG, HYD 08-NPT_M ;PLUG-HEX	1
3	02286437	FTG, HYD 08 NPT M;04 NPT F RDCR	1
4	02289608	FTG, HYD 08 NPT_M ;04-M JIC 90	1
5	02289609	FTG, HYD 08 NPT_M ;04-M JIC	2
6	02289613	GAUGE, PRESS 0-1000 2.50 BTM MT	1
7	02289641	FTG, HYD 08-NPT_M; 08-NPT_F TEE	1
8	02289685	VALVE, HYD CONTROL 6WAY-2POS	1
9	02290111	VALVE, HYD CONTROL 2WAY	1
10	12003900	FTG, HYD 08-NPT_M ;08-NPT_M	1

CONDUX TESMEC, INC. URW24 REEL TRAILER



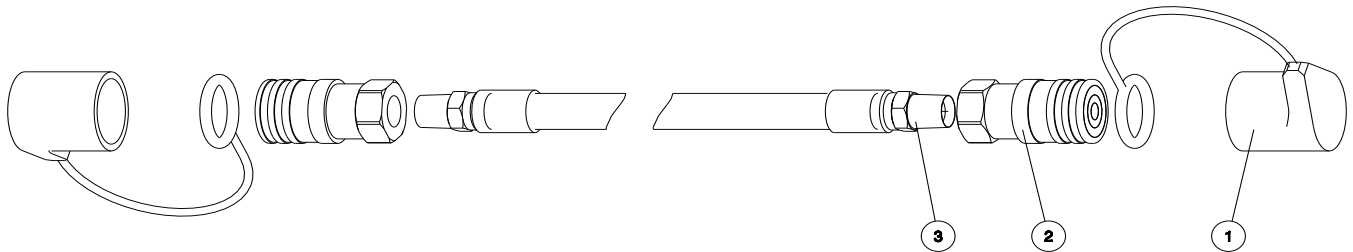
21032767 - HOSE, FEED (MFG) 08 X 50FT

ITEM	PART NO	DESCRIPTION	QTY
1	02289615	COUPLER, QD-M 08BODY X 08NPT	2
2	02289617	CAP, QD NIPPLE (M)-1/2IN BODY	2
3	02289725	HOSE 08X600.0-08NPTM-08NPTM 3K	1



21032768 - HOSE, RETURN (MFG) 16 X 50FT

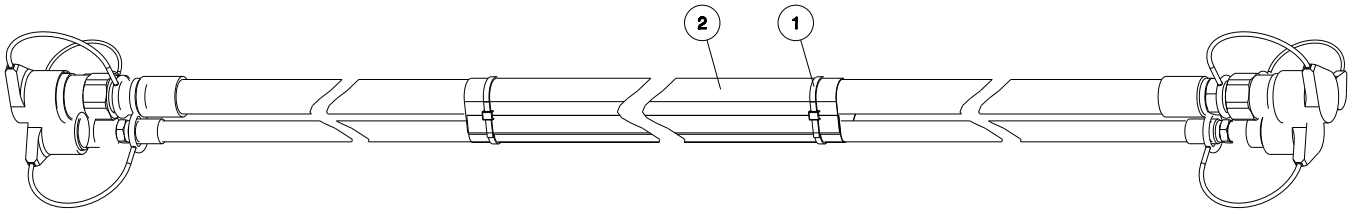
ITEM	PART NO	DESCRIPTION	QTY
1	02289616	COUPLER, QD-FM 12BODY X 16NPT	2
2	02289618	CAP, QD COUPLER (F)-3/4IN BODY	2
3	02289727	HOSE 16X600.0-16NPTM-16NPTM 3K	1



21032769 - HOSE, CASE DRAIN (MFG) 08 X 50FT

ITEM	PART NO	DESCRIPTION	QTY
1	02289626	CAP, QD COUPLER (F)-1/2IN BODY	2
2	02289632	COUPLER, QD-FM 08BODY X 08NPT	2
3	02289725	HOSE 08X600.0-08NPTM-08NPTM 3K	1

CONDUX TESMEC, INC. URW24 REEL TRAILER



21032790 - HOSE BNDL ASSY-3 X 50FT NPT FTG

ITEM	PART NO	DESCRIPTION	QTY
1	02268901	TIE, CABLE L=13.5 W=.27 120LBS	15
2	02290656	SLEEVE, PROTECTIVE HOSE 4IN X 450IN	1
ITEM 1 AND 2 INCLUDED WITH 21032790			

Condux Tesmec, Inc.

P.O. Box 668 • 145 Kingswood Drive, Suite 1 • Mankato, MN 56002-0668 USA

1-888-980-1209 • FAX 1-507-387-3855

Internet: <http://www.ConduxTescmec.com>



© Copyright 2013, Condux Tesmec, Inc.

Printed in USA

Literature Part Number: 21032699

Revision Number: 1.2