

RW23 Reel Winder/Trailer



Important Safety Notice

Read and understand all procedures and safety instructions before using Condux Tesmec stringing equipment. Observe all safety information on this page and note specific safety requirements as explained by procedures in this manual.

Failure to follow these instructions could result in serious personal injury or death.

ADVERTENCIA:

Favor de leer y comprender todas las instrucciones de operación y seguridad antes de usar la máquina. Si Ud. no comprende las instrucciones favor de consultarle a su jefe.



Save this user's guide for future reference.

COMMUNICATION WITH THE MANUFACTURER:

For information related to the machine (use, maintenance, spare parts) always state VIN or serial number, model number and manufacturing year. This date can be found on the parts identification label.

NOTE: Air Brakes are INACTIVE. They MUST be Activated prior to towing.
See Appendix A (Page 16) to Activate.

UNPACKING

When receiving the machine verify the condition of the package; immediately notify the transportation company and the manufacturer (use photos whenever possible) of any damage that may have occurred during shipment. Verify that the supplied product matches that which was ordered; immediately advise the manufacturer if there is a discrepancy.

Use caution when unpacking to avoid damaging the product.



!CAUTION: Disposal of all packaging materials must be in accordance with local regulations.

Manufacturer:

Condux Tesmec, Inc.
145 Kingswood Drive, Suite 1
PO Box 668
Mankato, MN 56002-0668 USA
Toll-Free: 1-877-854-1750
Fax: 507-387-3855
<http://www.ConduxTesmec.com>

**Manual Part Number
21033899 Rev 1.1**

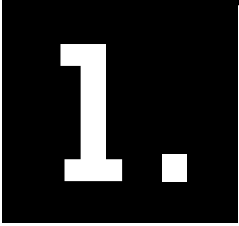
If you have questions on:
SAFETY - OPERATIONS - APPLICATIONS
CALL 1-877-854-1750



Table of Contents

1	General Information	4
	A. Product Description	4
	B. Safety Information	4
	C. Operator Information	4
	D. General Maintenance Information	4
	E. Machine Usage	5
	F. Responsibility	5
	G. Operators Manual	5
2	Technical Specifications.....	6
	A. Operational Conditions	6
	B. Hydraulic Oil	6
3	Safety Information.....	7
	A. Safety Devices	7
	B. Periodic Operations	7
	C. Cautions & Warnings.....	7
	D. Pulling Rope Failure	7
	E. Rotating Component Pinch-Point Hazards	7
	F. Crushing Injury when Loading or Unloading Rope or Conductor Reels.....	7
	G. Electrostatic Discharges	8
	H. Inhalation Engine Exhausting Gas.....	8
4	Transporting	8
	A. Machine Lifting	8
	B. Transporting Equipment by Truck	8
	C. Towing	8
5	Operating Procedures.....	9
	A. Initial Set-up.....	9
	B. Reel Changing Instructions - Reel Removal.....	10
	C. Paying Out Rope	15
6	Appendixes.....	16
	A. Mechanical Release of Air Brakes	16
	B. RW23 Trailer Mount	18
	C. RW23 Guards.....	20
	D. RW23 Levelwind Drive	22
	E. RW23 Trailer Hydraulics	24
	F. RW23 Labels.....	26
	G. Levelwind Head Assy - URW24	27
	H. Manifold Assy - Reel Stand.....	28
	I. Hydraulic Control Valve Assy.....	29
	J. Feed Hose (MFG) 08x50 ft	30
	K. Return Hose (MFG) 16x50 ft.....	30
	L. Case Drain Hose (MFG) 08x50 ft.....	31
	M. RW23 Rope Kits	32
	N. Notes	34

General Information



A. PRODUCT DESCRIPTION

The RW23 Reel Winder is available as a Skid Unit or Trailer Unit. It has a load capacity of 26000 LBS. The Hydraulic Negative Brake interacts with the hydraulic system on the Condux Tesmec Pullers or Puller Tensioners. It is also equipped with an automatic levelwind.

The reel has a capacity of 22000 FT of 22 mm (7/8 in) Anti-Twist Rope.

B. SAFETY INFORMATION

- Only trained and qualified operators should use this machine.
- Qualified operators are those persons who have received training from the machine owner's company or, alternatively, from the manufacturer.
- This machine must be used only for the work it was designed for.
- This machine should not be used with unauthorized personnel on the work site.
- For any questions regarding operation, function, maintenance, etc., contact the After-sales Service of the manufacturer.

C. OPERATOR INFORMATION

- Operators must be aware of all local, state and federal safety regulations governing the use of this equipment.
- Operators must wear suitable clothing to reduce the possibility of entanglement in the machine's moving parts. They should avoid the wearing of chains, and other jewelry for the same reason.
- Operators must use personal protective gear (i.e. gloves, boots, helmet, etc.).
- Operators must carefully follow hazard related instructions contained in this instruction manual or indicated on the machine.
- This machine's work area should be free as possible of oil or other liquid spills as well as materials or equipment that may be considered as an obstacle to proper operation.
- The operator must absolutely avoid the direct inhalation of the system's engine exhaust gas.

D. GENERAL MAINTENANCE INFORMATION

- It is absolutely forbidden to carry out any maintenance, or adjust any settings on this machine while pulling (except for those indicated in this manual).
- Before carrying out any maintenance stop the machine (except for those instances indicated otherwise in this manual) and wait till the system components subject to heating have cooled sufficiently
- All the maintenance performed on this machine must be carried out on a level surface and while the system is not under load.
- Authorized and trained personnel must perform all of the maintenance, both scheduled maintenance and repair. Authorized and trained personnel are those persons who have received training on the maintenance of this equipment from the machine owner's company or, alternatively, from the manufacturer.
- Maintenance personnel must wear suitable clothes to reduce the possibility of entanglement in the machine's moving parts. They should avoid wearing of chains, and other jewelry for the same reason.
- Operators must use personal protective gear (i.e. gloves, boots, helmet, etc.).

- All maintenance operations, both scheduled and repair, must be carried out per the instructions included in this manual or following technical instructions provided by the manufacturer. Failure to follow these instructions relieves the manufacturer from any responsibility and voids their warranty.

E. MACHINE USAGE

The machine must not be used:

- For lifting persons and/or goods
- For Tensioning or Pulling
- In a location where the machine can not be positioned and anchored properly
- In areas with brush or other materials that can be easily set on fire
- In closed/unventilated or poorly ventilated (tunnel or similar) areas
- At sites where fuels or explosives are present
- For structure demolition
- For the pulling of elastic elements
- With ropes or joints having a bigger diameter than that specified in this manual
- With over-riden or broken safety system devices
- For handling trucks or other movable equipment

F. RESPONSIBILITY

Use of the machine in situations different from those indicated, or not described in this manual, is to be considered extremely dangerous and/or forbidden.

Failure to use recommended restraints relieves the manufacturer from any responsibility for accidents, injuries to persons or damage to property. The manufacturer's warranty is also voided. Similarly, the manufacturer's responsibility ends when the following situations occur:

- Tampering and/or modifying of the system without the manufacturer's written acceptance (in this case the operator becomes the manufacturer assuming all obligations and responsibilities, both civil and penal).
- The use of non-original spare parts.
- Poor maintenance.
- Use with disconnected or over-riden safety devices.

G. OPERATORS MANUAL

- Information contained in this manual applies to all the operators charged with the use and/or the maintenance of the machine.
- This instruction manual is not a training manual.
- Before using the machine the job site supervisor and the operators must read this instruction manual.
- The supervisor is obliged to inform all operators about the instructions contained in this manual.
- All operators user must carefully follow the instructions contained in this manual.
- Before using the machine the operator must know the locations and the operation of all the controls.
- The job site supervisor must verify that the instructions contained in this manual are applied.
- This instruction manual must be kept with the machine, for the entire life of the machine, so it is available to all potential users and operators.
- The instruction manual must be kept in a sheltered and dry place.

Technical Specifications

2.

The CONDUX TESMEC RW23 Reel Winder was developed for transporting and winding steel rope when used in conjunction with a CONDUX TESMEC Puller or Puller/Tensioner which includes industry leading features like a Self-Acting Negative Brake and an Advanced Hydraulic System. The Tandem Dual Axle reel trailer comes standard with Air Brakes including a breakaway kit, Jack Stands, Storage Box and Wheel Chocks.

GENERAL SPECIFICATIONS REEL WINDER	
Weight Capacity	26,000 LBS
Max Rope OD	7/8 IN (22 mm)
Max Rope Capacity	22,000 FT
Trailer GVWR	45,000 LBS
Electrical System	12 Volt

A. OPERATIONAL CONDITIONS

Temperature: from 14°F (-10°C) to 104° (40°C).

Relevant moisture: from 30% to 90% ± 5%.

Weather conditions: any (in line with working conditions).

Natural and/or artificial lighting of the working site.

B. HYDRAULIC OIL

When using the machine always keep in mind operating conditions and their effect on the possibility of your exceeding the temperature limits for the system's hydraulic oil. Reference the Tensioner or Puller-Tensioner Manual for temperature limits.

Safety Information

A. SAFETY DEVICES

This machine has been equipped with the following safety devices:

- A mechanical negative safety brake that stops all movement if hydraulic pressure is lost
- Where possible, guards and covers are provided to protect personnel from moving parts

!DANGER: Do not use this machine with protective guards removed or with damaged or disconnected safety devices.

B. PERIODIC OPERATIONS

Proper operation of safety systems should be verified daily.

!CAUTION: Any customer alterations to the provided safety devices relieves the manufacturer of any responsibility for any resulting damage of property or injury to personnel.

C. CAUTIONS & WARNINGS

When operating this machine users must be aware of other risks associated with the work for which the machine is intended.

D. PULLING ROPE FAILURE

May cause uncontrolled movement of the entire machine. Both this and the danger then presented by the pulling rope and/or conductor can cause serious injury or death.

To reduce operator exposure to these dangers owners must:

- Regularly check the rope and replace it as soon as defects or signs of wear are detected
- Assume only the recommended operation positions indicated in this manual

E. ROTATING COMPONENT PINCH-POINT HAZARDS

Due to the nature of the work being performed and important system functionality, it is not possible to fully guard all rotating components.

To minimize risks operators must:

- Avoid any contact with the machine's rotating components
- Follow the anchoring instructions described in this manual
- Follow all recommendations in this manual regarding the use of personal safety equipment

F. CRUSHING INJURY WHEN LOADING OR UNLOADING ROPE OR CONDUCTOR REELS

Operators must know the proper methods for executing these tasks and should be trained to do them properly.

3.



G. ELECTROSTATIC DISCHARGES

To reduce the risk presented by static electric charge build up in the ropes and conductors during pulling operations, the machine must be properly grounded.

To minimize these risks operators must:

- Be trained in, and apply, the proper methods used to ground the machine during before using the machine.

H. INHALATION ENGINE EXHAUSTING GAS

To minimize these risks operators must:

- Assume the proper operating position during operation and use appropriate safety equipment as needed.

Transporting

4.

!DANGER: Failure to follow the recommendations in this section may create a dangerous situation and/or damage to the machine. The manufacturer's warranty may also become void as a result.

A. MACHINE LIFTING

For lifting the machine, use only devices (overhead traveling cranes, lift trucks, ropes, cables, hooks, etc.) with a load capacity that meets or exceeds the weight to be lifted. Personnel should not be on the machine when it is lifted.

B. TRANSPORTING EQUIPMENT BY TRUCK

Attach the machine to the floor of a truck box or trailer using chains and hooks at the attachment points provided. Use wheel chocks, between wheels, nailed to floor to prevent rolling.

C. TOWING

This machine is designed for towing at highway speeds. No personnel may ride on the machine at any time while towing the machine at ANY speed.

!CAUTION: Always make sure to hook safety chains, attach lights & air hoses to transporting vehicle before towing machine.

NOTE: Check and retighten (if required) all lug nuts prior to each use.



Operating Procedures

!WARNING: The “freewheel” mode is to be used only for positioning the reel/drum for loading and unloading. The reel stands are designed to slowly bleed off pressure from the negative brake for safety reasons. Using the freewheel mode for extended rotations of the reel/drum can result in damage to the negative brake and motor.

5.



It is essential that the RW23 be properly set up before operation. Using the following procedure will allow the unit to be set up in a short period of time and yield optimum performance.

A. INITIAL SET-UP

1. Locate the RW23 20-30 feet behind the stringing equipment as the site allows.
2. Install the wheel chocks provided with the RW23.
3. Securely anchor using the eyes located on the trailer frame (see Figure 1).
4. Properly ground the trailer using the ground connection on the rear bumper or ground connections on the skid unit. (see Figures 2 & 2A).



Figure 1



Figure 2



Figure 2A

5. Connect the hydraulic hoses to the stringing machine (see Figure 3).



Figure 3

6. Secure the area between the stringing equipment and this reel trailer with Caution Tape or by other means to limit personnel.

B. REEL CHANGING INSTRUCTIONS - REEL REMOVAL

REEL BRAKE OPERATING INSTRUCTIONS

-WARNING-

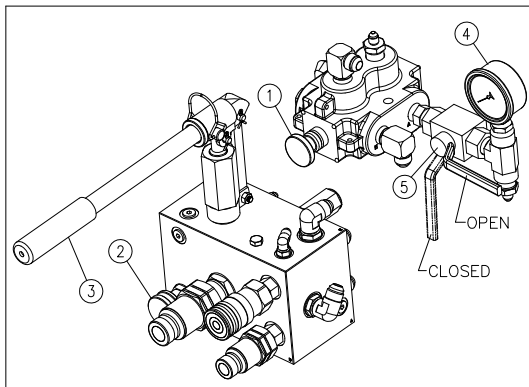
**DO NOT RELEASE THE BRAKE WITHOUT
PROPERLY SECURING THE ROPE OR CABLE**

LOAD AND UNLOAD REEL

1. INSURE THAT THE HYDRAULIC SUPPLY FROM THE STRINGING EQUIPMENT IS TURNED OFF OR DISCONNECTED.
2. PUSH THE SELECTOR VALVE HANDLE (ITEM 1) IN.
3. CLOSE THE VALVE (ITEM 2) BY TURNING THE KNOB CLOCKWISE UNTIL IT STOPS OR BOTTOMS OUT.
4. OPEN BALL VALVE (ITEM 5), SHOWN IN OPEN POSITION.
5. OPERATE THE PUMP HANDLE (ITEM 3) UNTIL THE PRESSURE ON GAUGE (ITEM 4) IS APPROXIMATELY 450 PSI. USE CAUTION AS THE BRAKE BEGINS TO RELEASE. AN UNBALANCED LOAD WILL CAUSE THE REEL TO TURN.
6. ROTATE THE REEL UNTIL THE "UP" LABEL ON THE DRIVE BAR IS IN THE 12 O'CLOCK POSITION. WHEN THE REEL IS IN THIS POSITION, TURN VALVE (ITEM 2) COUNTER CLOCKWISE A FEW TURNS TO RE-APPLY THE BRAKE. PRESSURE ON GAUGE (ITEM 4) WILL BE ZERO.

OPERATE REEL STAND

1. PULL OUT THE SELECTOR VALVE KNOB (ITEM 1) AND CLOSE BALL VALVE (ITEM 5).
2. REPLACE THE REEL AND RESUME STRINGING OPERATIONS.



21032542 REV3

Illustration 1

1. Insure that the hydraulic supply from the stringing equipment is turned off.

2. Push in the Selector Valve Handle (see Figure 4).

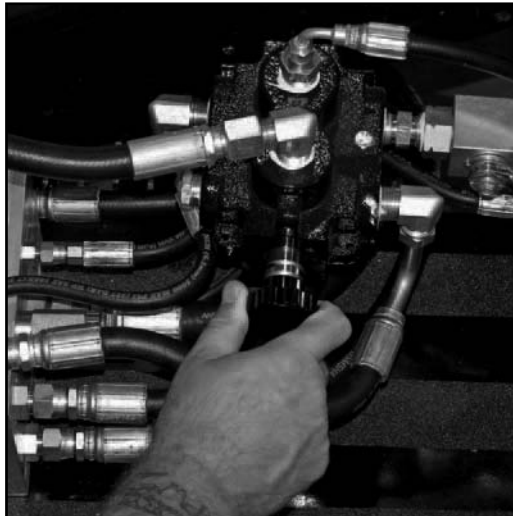


Figure 4

3. Close the Valve by turning the Knob clockwise until it stops or bottoms out (see Figure 5).

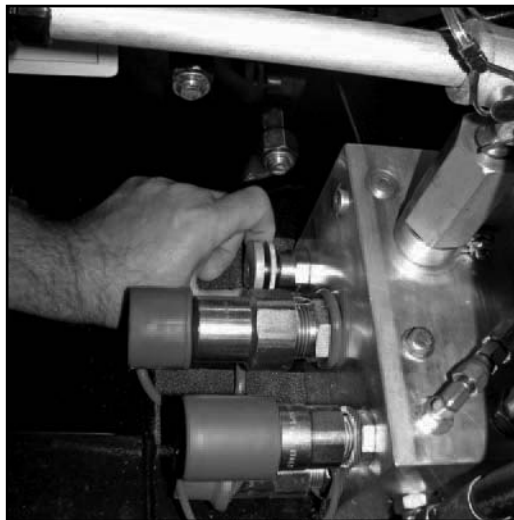


Figure 5

4. Open the Ball Valve (in line with flow) as shown (see Figure 6).

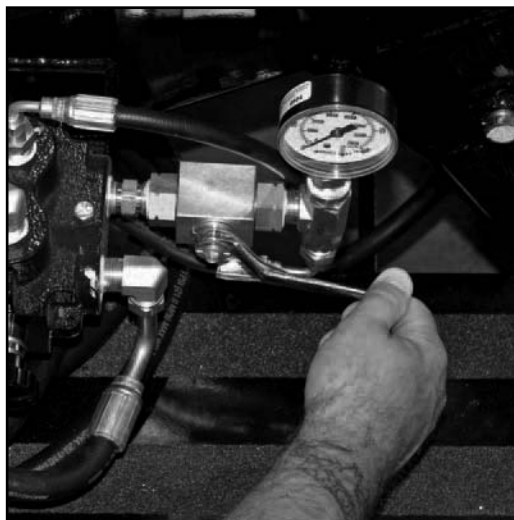


Figure 6



5. Operate the Pump Handle (see Figure 7) until the pressure on the Gauge is approximately 450 PSI.

!CAUTION: As the brake releases, an unbalanced reel can cause the Reel to rotate unexpectedly.

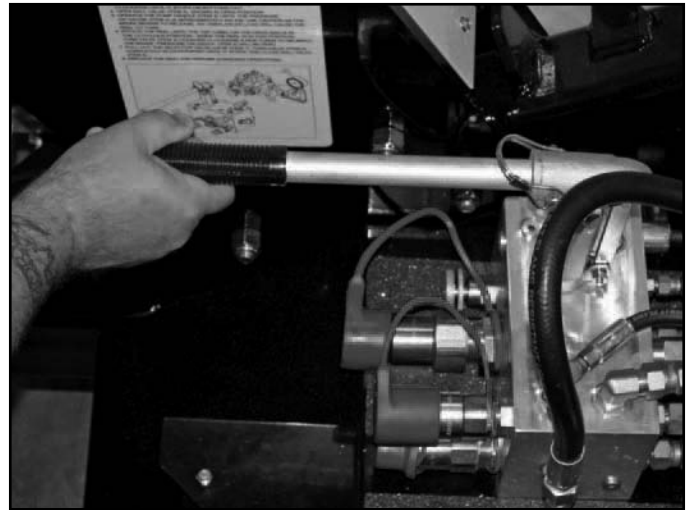


Figure 7

6. Rotate Drum until Drive Pin / Drive Saddle is approximately 90 Degrees off of vertical. (See Figure 8)



Figure 8

7. When the reel is positioned correctly, turn the Valve Knob counter-clockwise a few turns to re-apply the brake. Pressure on gauge should read zero (see Figure 9). Install lifting equipment to Reel.



Figure 9

8. Remove Bolt and Nuts from Drive Pin Saddle. (see Figure 10) Remove Nuts from Arbor Bar Bolts, but do not remove the Bolts. (see Figure 11) Rotate Reel until Drive Pin is in the Vertical Position. Slowly lift Reel Assembly out of Reel Saddles. Change out reels as required. Reinstall reel into saddles. Rotate Reel into Drive Pin Saddle and install Bolt and Nuts. Install Nuts on Arbor Bar Bolts.

NOTE: Lifting Unit MUST have a capacity of lifting 26000 LBS.



Figure 10



Figure 11

9. Pull out Selector Valve handle (see Figure 12).

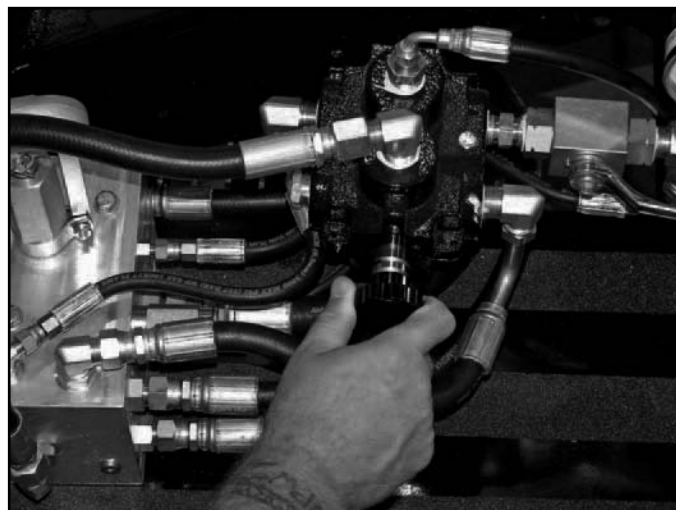


Figure 12

10. Turn Valve Knob in completely (clockwise) until it stops (see Figure 13).



Figure 13

11. Close Ball Valve (perpendicular to flow) as shown (see Figure 14).



Figure 14

12. Stringing Operation can now be resumed.

C. PAYING OUT ROPE

1. Payout rope by hand (Free Spool). ****NOTE: DO NOT RUN rope through Levelwind at this time.** See steps 2 thru 5 of Reel Changing instructions. Pull off rope as needed.
2. To line up Levelwind with rope disengage yellow Lock Collar (see Figure 15). Pull black handle out and turn to position Levelwind (see Figure 16).



Figure 15



Figure 16

3. Once rope has been paid out to other side place rope in Levelwind (see Figures 17 and 18).



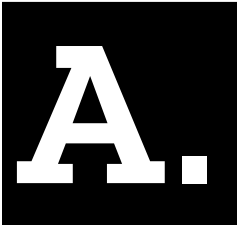
Figure 17



Figure 18

NOTE: When installing hardline in Stringing Blocks, DO NOT use the Levelwind.

Mechanical Release of Air Brakes



APPENDIX



A. INSTRUCTIONS FOR MECHANICAL RELEASE OF AIR BRAKES

!DANGER – The following instructions only apply when spring is not pressurized. If air pressure is used to compress the spring, do not tighten release to more than finger tight. Torquing the release tool nut while the spring brake is pressurized can cause spring piston damage resulting in sudden release of the spring which could **CAUSE DEATH, SEVER PERSONAL INJURY AND/OR PROPERTY DAMAGE.** Air pressure must be release after caging, prior to any disassembly.

To CAGE Park Brake Compression Spring (Release Park Brake)

!Important – Always block wheels to prevent vehicle roll away when performing any brake maintenance.

!Important – Do not over torque release tool assembly. Over torquing release tool can cause spring piston damage. Torque to a maximum 55ft/lb, counterclockwise.

1. Turn release tool nut counter clockwise with hand wrench (**DO NOT USE HIGH SPEED AND/OR POWER DRIVEN IMPACT WRENCH**) and make certain push rod is retracting (see Figure 1).
2. This procedure will be made much easier if air pressure (100-120 PSIG) is used to collapse the compression spring before turning the release tool nut with a hand wrench. Proper caging will be complete when slight resistance is felt after turning the release tool nut. Release the air pressure after caging prior to any disassembly.

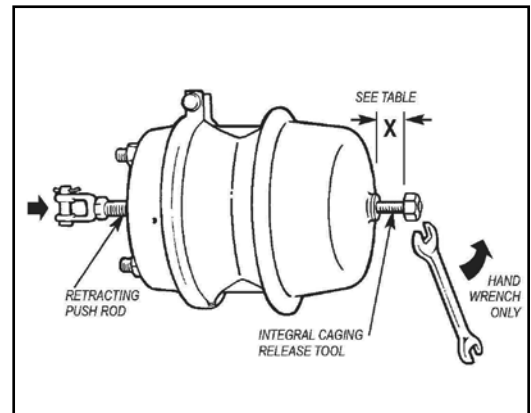


Figure 1

!Important – To ensure the power spring is fully caged, the release tool length (X dimension) (figure 1) should measure as shown in table below.

Stroke	“X” Minimum	“X” Maximum
2 1/2 IN	2.40 IN	2.56 IN
3 IN	2.90 IN	3.06 IN

Note: If dimension of release tool (X dimension) length is less than the minimum measurement, spring brake unit must be replace.

B. TO UN CAGE PARK BRAKE COMPRESSION SPRING (APPLY PARK BRAKE)

1. Turn release tool nut clockwise with hand wrench (**DO NOT USE HIGH SPEED AND/OR POWER DRIVEN IMPACT WRENCH**). This procedure will be made much easier if air pressure (100-120 PSIG) is used to collapse the compression spring
2. Turn release tool nut until contact is made with the chamber. Torque to 55 ft/lbs. Torque value is stamped on chamber (see Figure 2).

!DANGER – DISARM spring chamber before discarding old brake. To disarm use a suitable Safety Chamber. Failure to disarm assembly prior to disposal may, in time, result in spontaneous release of the spring chamber and its contents, which could CAUSE DEATH, SEVER PERSONAL INJURY AND/OR PROPERTY DAMAGE.

!DANGER – Use of an air gun, air ratchet or powered nut runner can cause internal damage to the actuator which will void the warranty.

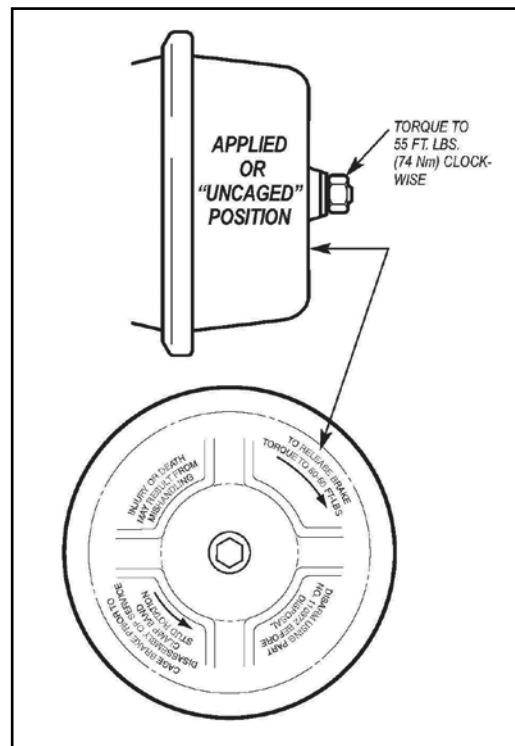


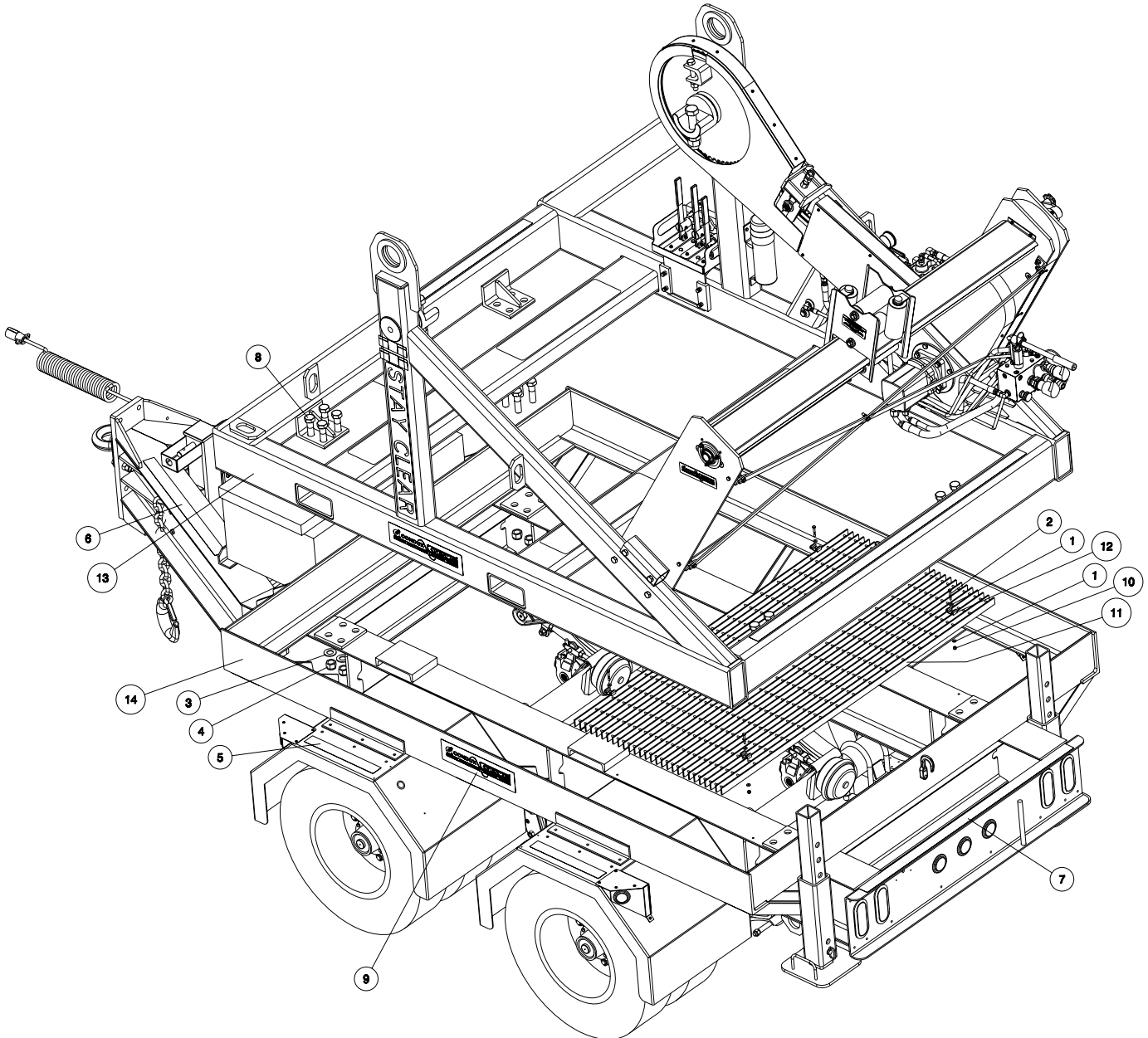
Figure 2



RW23 Trailer Mount

B.

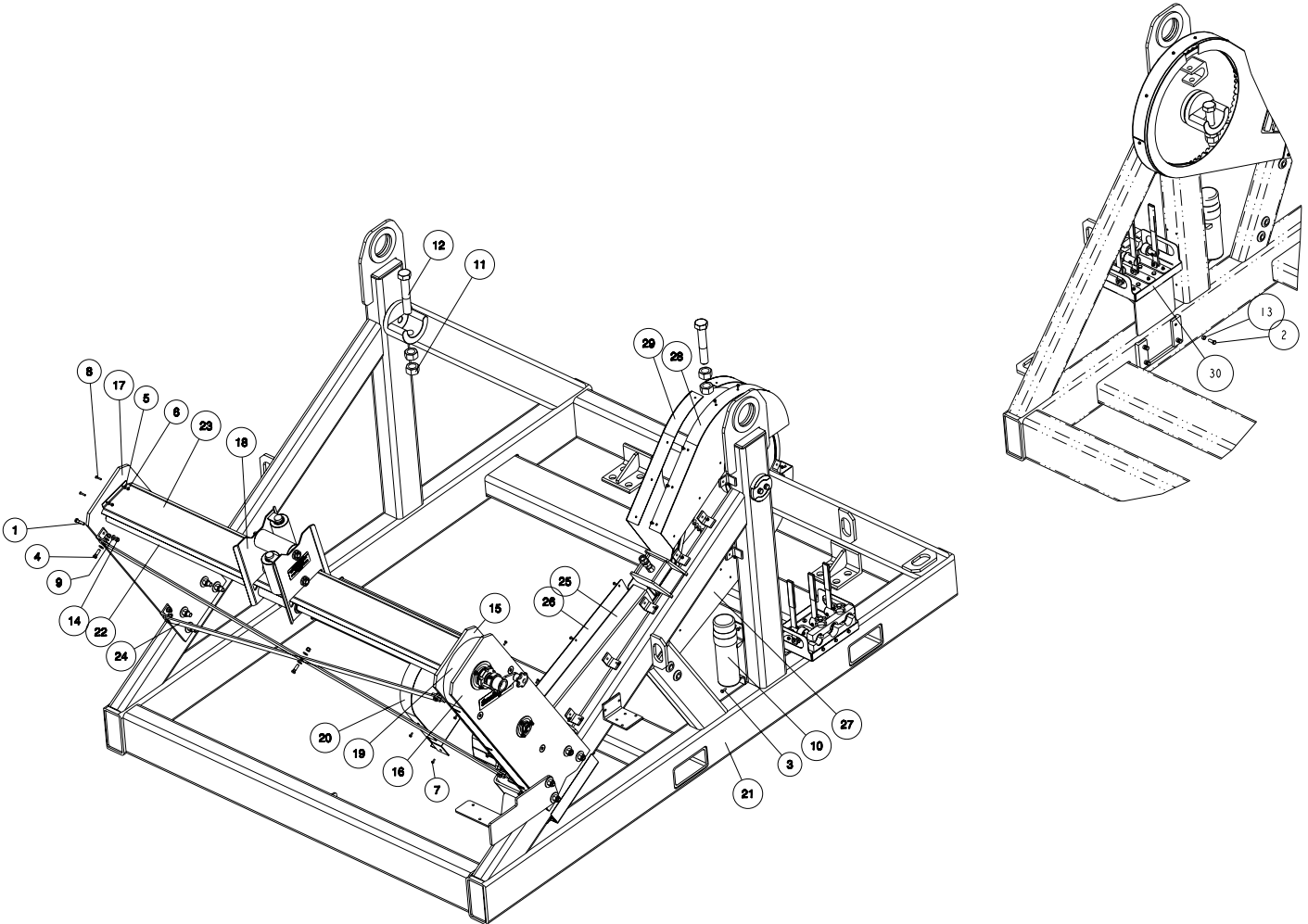
APPENDIX



RW23 TRAILER MOUNT

ITEM	PART NO	DESCRIPTION	QTY
1	02102001	FLATWASHER 1/4 IN TYPE A NARR CZ	8
2	02288425	CAPSCREW 1/4 IN-20 X 1.75 HEX GR 5 CZ	4
3	02288457	FLATWASHER 1 IN TYPE A NARR CZ	16
4	02288826	LOCK NUT 1 IN-8 NYLOC GR 8 CZ	16
5	02289499	TAPE,ABRASIVE ANTISLIP 2 IN-15.00 IN	4
6	02289499	TAPE,ABRASIVE ANTISLIP 2 IN-30.00 IN	2
7	02289499	TAPE,ABRASIVE ANTISLIP 2 IN-50.00 IN	1
8	02289919	CAPSCREW 1 IN-8 X 3.50 HEX GR 8 YZ	16
9	02290120	DECAL,CONDUX/TESMEC 16 X 04	2
10	12013700	LOCK NUT 1/4 IN-20 NYLOC GR 5 CZ	4
11	21032582	PLATFORM- ALUM GRATING	1
12	21032583	SADDLE CLAMP -GRATING	4
13	21033801	REEL WINDER ASSY - RW23	1
14	21033802	REEL WINDER TRAILER	1

RW23 Guards



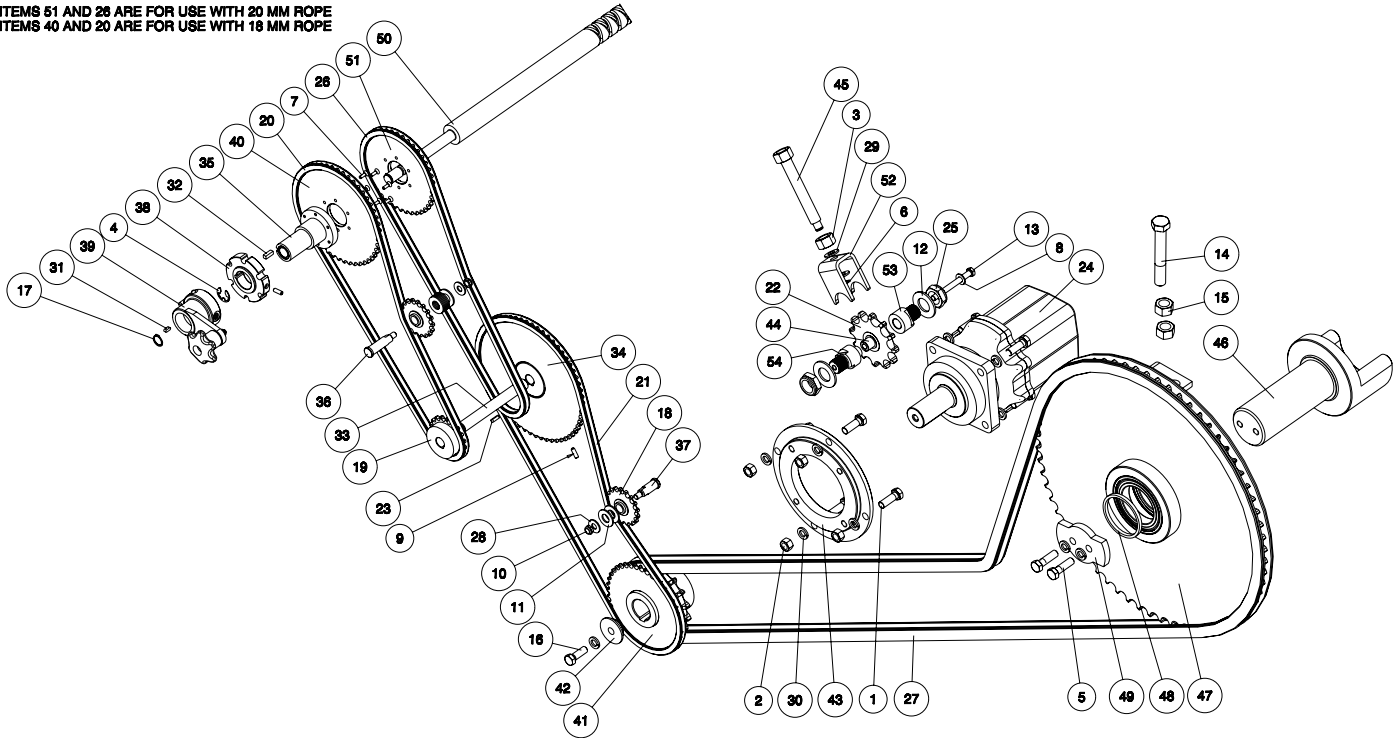
RW23 SKID FRAME-GUARDS			
ITEM	PART NO	DESCRIPTION	QTY
1	02008901	CAPSRW 0.37-16X1.50 HHSTGR5 CZ	4
2	02020701	CAPSRW 0.37-16X1.00 HHSTGR5 CZ	4
3	02021400	CAPSRW 0.25-20X0.75 HHSTGR5 CZ	3
4	02032000	CAPSRW 0.37-16X1.25 HHSTGR8 YZ	5
5	02178601	FLATWSHR #10 TYPEA- ST CZ	4
6	02186901	NUT #10-24 NYLOC ST GR2 CZ	4
7	02266400	CAPSRW #10-24X0.50 HFSTGR5 CZ	41
8	02269778	CAPSRW #10-24X1.00 BHSTALY PL	4
9	02288230	FLATWSHR 0.37 TYPEA-NARR ST CZ	15
10	02289639	HOLDER,MANUAL-WEATHERPROOF	1
11	02290241	NUT 1.25-07 HEX ST GR8 YZ	4
12	02290242	CAPSCW 1.25-07X7.00 HHSTGR8 YZ	2
13	12001302	NUT 0.37-16 HEX ST GR5 CZ	4
14	12013500	NUT 0.37-16 NYLOC ST GR5 CZ	9
15	21032453	PLATE,INNER LVLWIND-WELD-URW24	1
16	21032456	PLATE,OUTER LEVELWIND LH URW24	1
17	21032457	PLATE,OUTER LEVELWIND RH URW24	1
18	21032460	HEAD,LEVELWIND-ASSY-URW24	1
19	21032491	GUARD,UPPER CHAIN LVLWND-URW24	1
20	21032492	GUARD,LOWER CHAIN LVLWND-URW24	1
21	21033804	FRAME,WELDMENT-RW23	1
22	21033828	SHAFT,GUIDE-LEVELWIND RW23	2
23	21033829	GUARD,LEVELWIND SCREW - RW23	1
24	21033830	BRACE,LEVELWIND CROSS - RW23	2
25	21033831	GUARD,LOWER DRIVE CHAIN - RW23	1
26	21033832	GUARD,DRIVE-LOWER COVER - RW23	1
27	21033833	GUARD,DRIVE SPROCKET-LOW-RW23	1
28	21033834	GUARD,DRIVE SPROCKET-UP-RW23	1
29	21033835	SPROCKET,DRIVE 40TOOTH - RW23	1
30	21033865	PRESS RELIEF TOOL ASSY-W/MOUNT	1

RW23 Levelwind Drive

D.

APPENDIX

ITEMS 51 AND 28 ARE FOR USE WITH 20 MM ROPE
ITEMS 40 AND 20 ARE FOR USE WITH 18 MM ROPE



RW23 SKID - CHAIN DRIVE

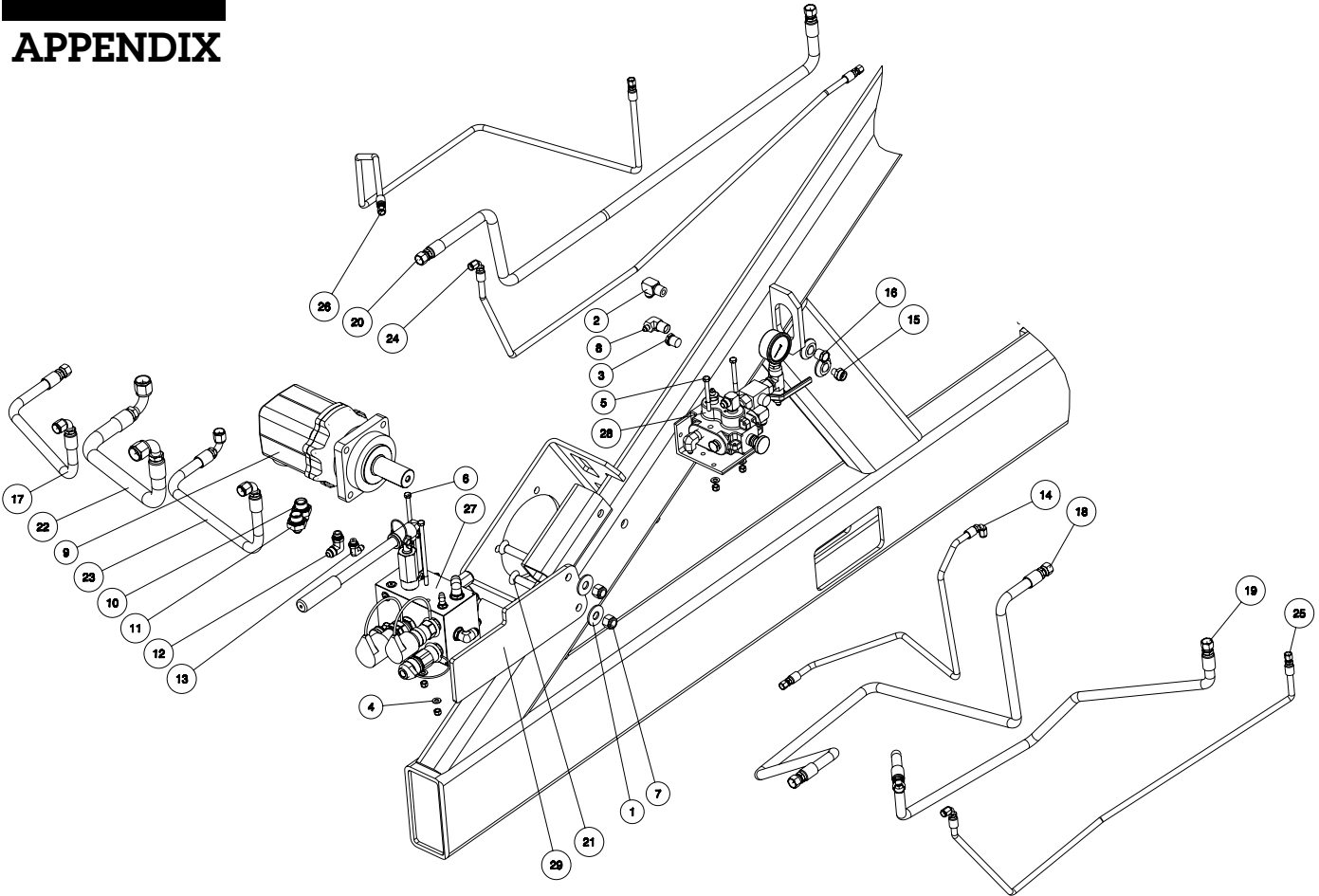
ITEM	PART NO	DESCRIPTION	QTY
1	02038401	CAPSRW 0.50-13X1.50 HHSTGR8 YZ	8
2	02125101	NUT 0.50-13 HEX ST GR5 CZ	4
3	02125106	NUT 0.75-10 HEX SS 304	1
4	02235900	RING,RETAINING .750 EXT(1000)	1
5	02253600	CAPSRW 0.50-13X1.75 HHSTGR5 CZ	2
6	02287310	RING,RETAINING .500 EXT(2000)	1
7	02288209	CAPSRW #10-24X0.62 CSSTALY PL	6
8	02288230	FLATWSHR 0.37 TYPEA-NARR ST CZ	1
9	02288364	SETSCREW, .250-20- .75-HXSO SS	2
10	02288419	NUT 0.37-16 NYLOC STGR2 THN CZ	2
11	02288454	FLATWSHR 0.62 TYPEA-NARR ST CZ	10
12	02288457	FLATWSHR 1.00 TYPEA-NARR ST CZ	2
13	02288829	CAPSRW 0.37-16X3.75 HHSTGR5 CZ	1
14	02289145	CAPSRW 0.75-10X5.00 HHSTGR8 YZ	1
15	02289443	NUT 0.75-10 HEX ST GR8 YZ	2

16	02289525	CAPSRW M12-1.75X 35 HHST 8.8CZ	1
17	02289570	RING,RETAINING .750 EXT(3100)	1
18	02289571	SPROCKET,IDLER HB40A17	2
19	02289572	SPROCKET,40B19 X 3/4 IN BORE	1
20**	02289581	CHAIN,#40-1/2PTCH 104PTCHS SGL	1
21	02289582	CHAIN,#40-1/2PTCH 124PTCHS SGL	1
22	02289585	SPROCKET,IDLER HB80A12 X 3/4	1
23	02289619	KEY,SQ 0.187 X 0.75 CF 1018	2
24	02289680	BRAKE ASSY W/MOTOR-PAINTED	1
25	02289734	NUT 1.00-14 NYLOC STGR2 THN CZ	2
26*	02290244	CHAIN,#40-1/2PTCH 100PTCHS SGL	1
27	02290245	CHAIN,#80-1PTCH 161PTCHS SGL	1
28	12000901	FLATWSHR 0.37 TYPEA-WIDE ST CZ	2
29	12008301	FLATWSHR 0.50 TYPEA-NARR ST CZ	2
30	12010600	LOCKWSHR 0.50 REGULAR ST CZ	11
31	21032451	KEY,SQ 0.187 X 0.50 CF 1018	1
32	21032458	KEY,SQ 0.250 X 0.75 CF 1018	1
33	21032473	SHAFT,LOWER DRV LVLWIND URW24	1
34	21032474	SPROCKET 40B60 WELD URW24	1
35	21032476	HUB,DRIVE SPROCKET-40B42 URW24	1
36	21032478	SHAFT,IDLER UPPER LVLWIND URW24	1
37	21032479	SHAFT,IDLER LOWER LVLWIND URW24	1
38	21032481	HUB,MANUAL DRIVE-LVLWIND URW24	1
39	21032486	HANDLE,LEVELWIND WELD URW24	1
40**	21032557	SPROCKET,DRIVE 48TOOTH -URW24	1
41	21032571	HUB,MAIN DRIVE-WELD(DANFOSS)	1
42	21032573	RETAINER,DRV SPROCKET-DANFOSS	1
43	21032574	ADAPTER,BRAKE MOUNT-(DANFOSS)	1
44	21032780	SHAFT,IDLER ADJUSTMENT	1
45	21032782	SHAFT,TAKEUP ADJUSTMENT(WELD)	1
46	21033820	SUPPORT,SHAFT-DRIVE SIDE-RW23	1
47	21033823	SPROCKET,DRIVE-WELD - RW23	1
48	21033825	SPACER,DRIVE SPROCKET-RW23	1
49	21033826	PLATE,DRIVE SUPPORT LOCK-RW23	1
50	21033827	SHAFT,LEVELWIND SCREW - RW23	1
51*	21033835	SPROCKET,DRIVE 40TOOTH - RW23	1
52	21033848	SADDLE,IDLER ADJUSTMENT-RW23	1
53	21033851	TAKE-UP,ADJUST-OUTSIDE-RW23	1
54	21033852	TAKE-UP,ADJUST-INSIDE-RW23	1
* THESE ITEMS FOR USE WITH 20 MM ROPE			
**THESE ITEMS FOR USE WITH 18 MM ROPE			

RW23 Trailer Hydraulics



APPENDIX

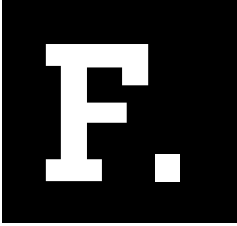


RW23 SKID - HYDRAULICS

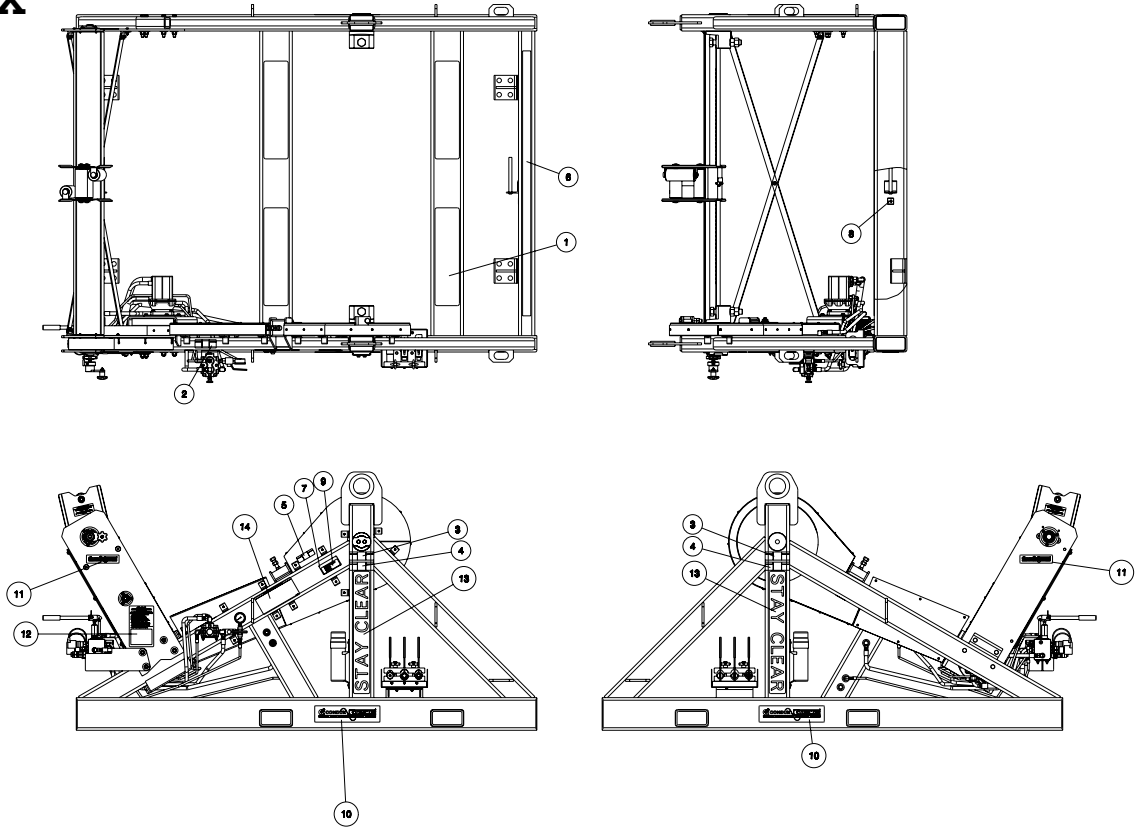
ITEM	PART NO	DESCRIPTION	QTY
1	02047002	FLATWSHR 0.62 TYPEA-WIDE ST CZ	2
2	02093600	FTG,HYD 08-NPT_M ;08-M JIC 90'	1
3	02198000	FTG,HYD 08-NPT_M ;PLUG-HEX	1
4	02288231	FLATWSHR 0.31 TYPEA-NARR ST CZ	4
5	02288430	CAPSRW 0.31-18X3.00 HHSTGR5 CZ	2
6	02288492	CAPSRW 0.31-18X6.00 HHSTGR5 CZ	2
7	02289448	NUT 0.62-11 NYLOC ST GR8 YZ	2
8	02289608	FTG,HYD 08 NPT_M ;04-M JIC 90	1
9	02289680	BRAKE ASSY W/MOTOR-PAINTED	1
10	02289681	FTG,HYD 12 JIC;12-BSPP W/SEAL	1

11	02289682	FTG,HYD 08 JIC;12-BSP W/SEAL	1
12	02289683	FTG,HYD 08 JIC;06-BSP 90-SEAL	1
13	02289684	FTG,HYD 04 JIC;04-BSP 90-SEAL	1
14	02289689	HOSE 04X 40.0-04SW -04SW90 3K	1
15	02289711	GAUGE,SITE-GLASS 1/2-14NPT	1
16	02289712	FTG,HYD 08 NPT BREATHER VENT	1
17	02289752	HOSE 08X 40.0-08SW -08SW90 3K	1
18	02289934	HOSE 08X 74.0-08SW -08SW 3K	1
19	02289934	HOSE 08X 74.0-08SW -08SW 3K	1
20	02289934	HOSE 08X 74.0-08SW -08SW 3K	1
21	02290043	CAPSRW 0.62-11X5.50 CSSTALY CZ	2
22	02290272	HOSE 12X 30.0-12SW90-12SW90	1
23	02290273	HOSE 08X 30.0-08SW90-08SW90	1
24	02290274	HOSE 04X 60.0-04SW -04SW90 3K	1
25	02290274	HOSE 04X 60.0-04SW -04SW90 3K	1
26	02290275	HOSE 04X 60.0-04SW -04SW 3K	1
27	12002300	NUT 0.31-18 NYLOC ST GR5 CZ	4
28	21032453	PLATE,INNER LVLWIND-WELD-URW24	1
29	21032460	HEAD,LEVELWIND-ASSY-URW24	1
30	21032474	SPROCKET 40B60 WELD URW24	1
31	21032476	HUB,DRIVE SPROCKET-40B42 URW24	1
32	21032486	HANDLE,LEVELWIND WELD URW24	1
33	21032571	HUB,MAIN DRIVE-WELD(DANFOSS)	1
34	21032765	MANIFOLD ASSY - REEL STAND	1
35	21032775	VALVE,CONTROL ASSY-REEL STANDS	1
36	21032782	SHAFT,TAKEUP ADJUSTMENT(WELD)	1
37	21033823	SPROCKET,DRIVE-WELD - RW23	1
38	21033831	GUARD,LOWER DRIVE CHAIN - RW23	1
39	21033833	GUARD,DRIVE SPROCKET-LOW-RW23	1
40	21033834	GUARD,DRIVE SPROCKET-UP-RW23	1
41	21033838	GUARD,DRIVE SPROCK-INSIDE-RW23	1
42	21033847	BRACKET,MANIFOLD MTG-WELD-RW23	1

RW23 Labels

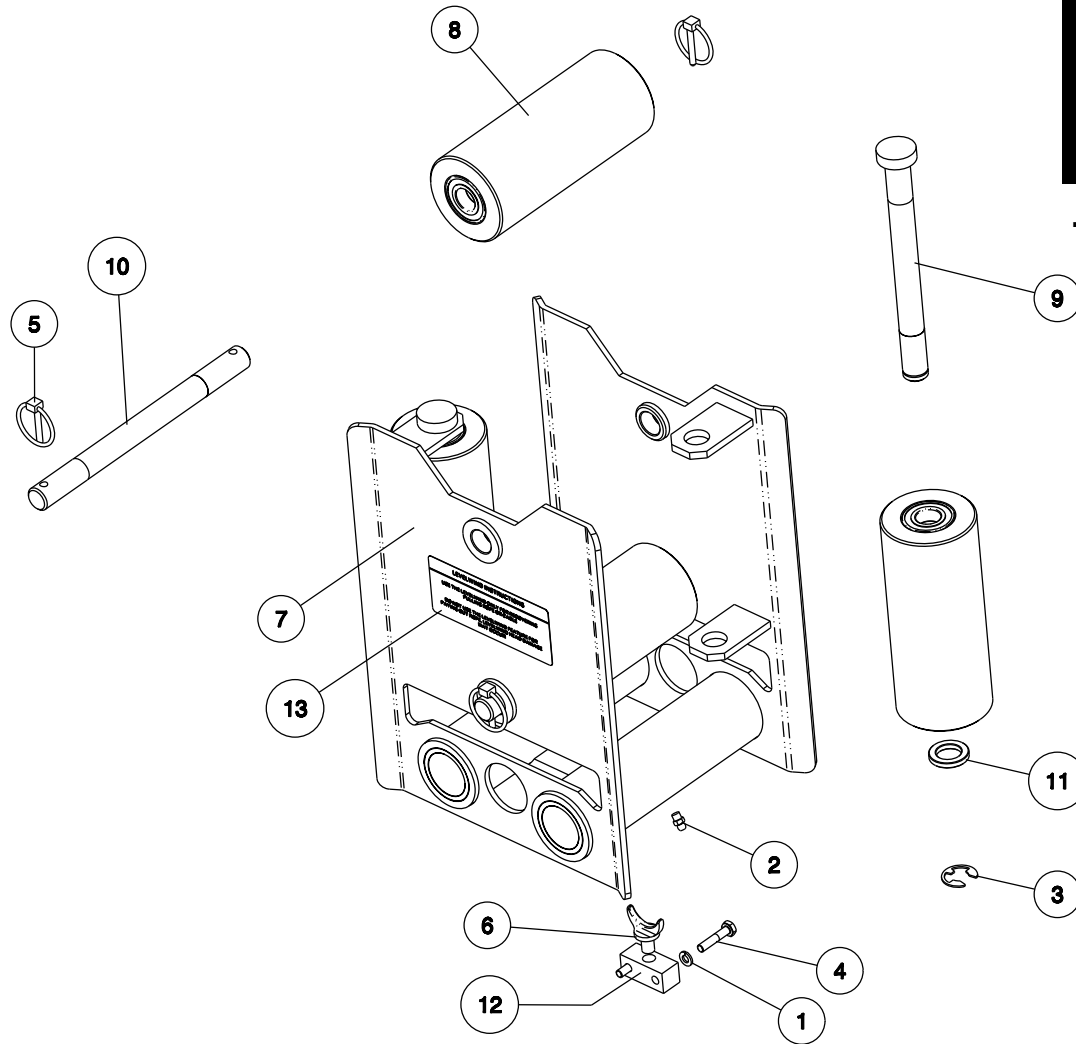


APPENDIX



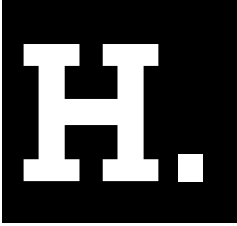
RW23 SKID - LABELS			
ITEM	PART NO	DESCRIPTION	QTY
1	02266200	STRIP,ANTI-SLIP FO TRAILER	4
2	02269303	LABEL,WARNING-HYD FLUID 2 X 6	1
3	02269603	LABEL,WARNING-CAPSTN CATCH 2X6	2
4	02269604	LABEL,WARNING-CABLE TENSION 2X6	2
5	02269731	LABEL,WARNING-STAY CLR 1.5X4.5	1
6	02289499	TAPE,ABRASIVE ANTISLIP 2 IN-65.00 IN	2
7	02289504	SCREW,DRIVE #04 X 0.375 SS	4
8	02289640	LABEL,GROUND-ISO 1.5 X 1.5	2
9	02289740	TAG,METAL SERIAL 2.50 X 5.00	1
10	02290120	DECAL,CONDUX/TESMEC 16 X 04	2
11	02290121	DECAL,CONDUX/TESMEC 08 X 02	2
12	21032542	LABEL,INST-REEL LOADING URW24	1
13	21032546	LABEL,STAY CLEAR URW24	2
14	21032548	LABEL,INSTRUCTION-OPER URW24	1

Levelwind Head Assy - URW24

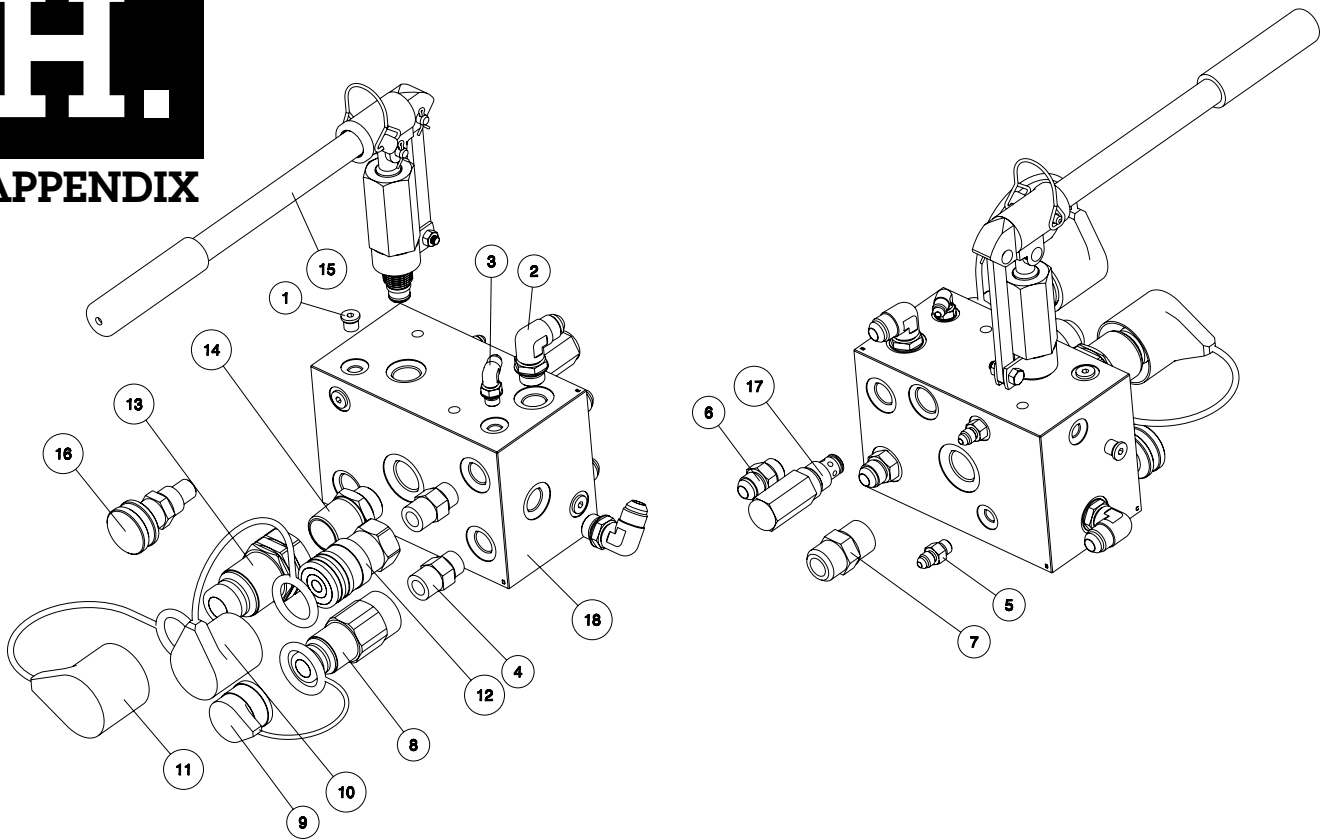


LEVELWIND HEAD ASSY			
ITEM	PART NO	DESCRIPTION	QTY
1	02021501	LOCKWSHR 0.25 REGULAR ST CZ	2
2	02222000	ZERK,GREASE, SHORT STR 1/4-28	2
3	02235900	RING,RETAINING .750 EXT(1000)	2
4	02288426	CAPSRW 0.25-20X1.25 HHSTGR5 CZ	2
5	02289102	PIN,QUICK LOCK 3/16" X 1-1/4"	4
6	21011189	PAWL,BRNZ FNDR D00-00197	1
7	21032461	PLATE,LEVELWIND HEAD-WELDMENT	1
8	21032467	ROLLER,LEVELWIND GUIDE-ASSY	4
9	21032469	SHAFT,VERT GUIDE ROLLER-URW24	2
10	21032470	SHAFT,HORZ GUIDE ROLLER-URW24	2
11	21032471	BUSHING,VERTICAL ROLLER-URW24	2
12	21032472	BLOCK,LEVELWIND FINGER MNT	1
13	21032547	LABEL,INST-LEVELWIND URW24	2

Manifold Assy - Reel Stand



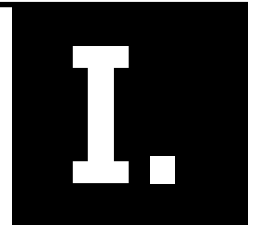
APPENDIX



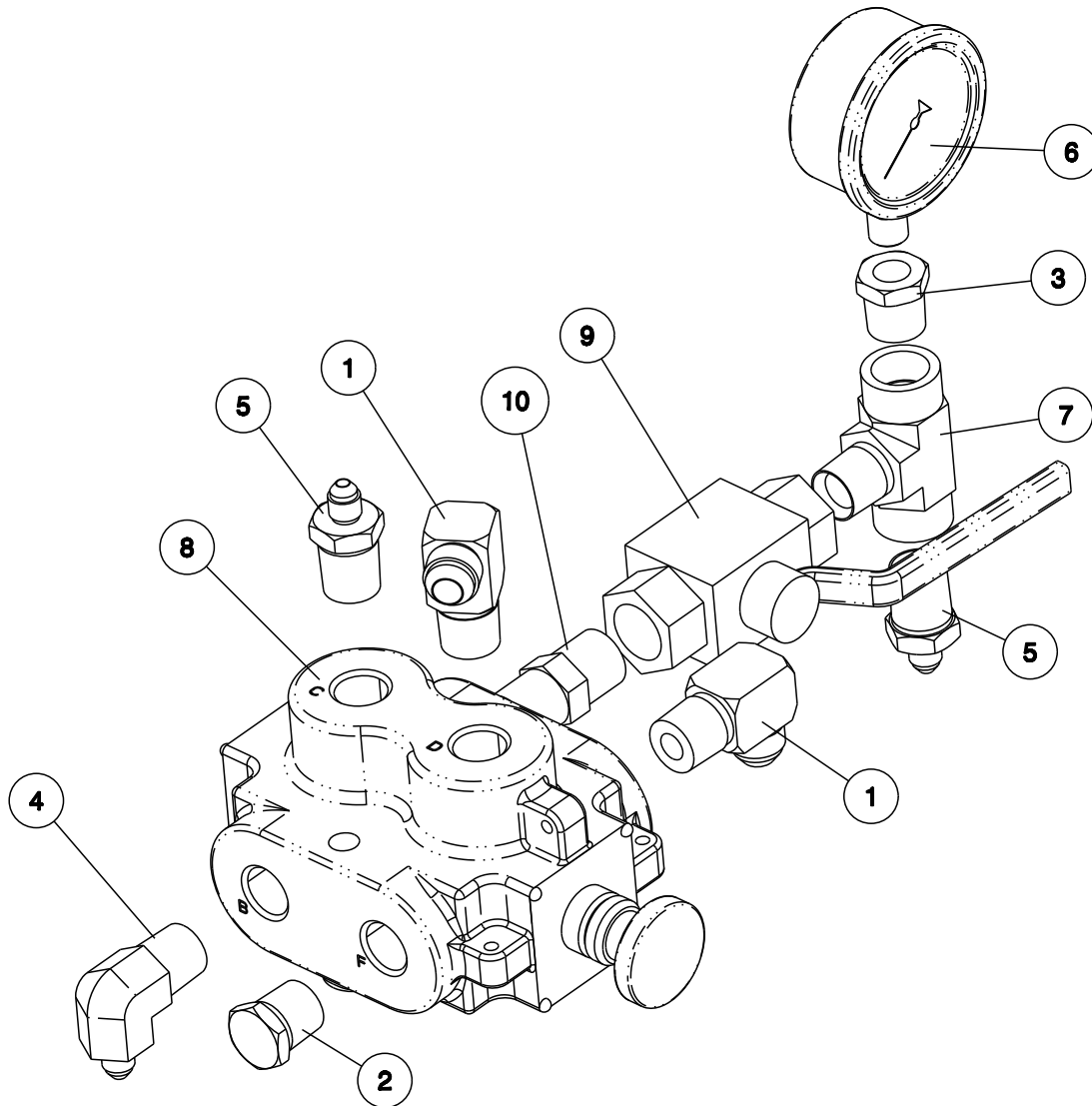
HYD MANIFOLD (PUMP) ASSY

ITEM	PART NO	DESCRIPTION	QTY
1	02045904	HYD FITTING 1/4M SAE O-RING PLUG	5
2	02094200	HYD FITTING 1/2M SAE O-RING X 1/2M JIC 90 EL	3
3	02127000	HYD FITTING 1/4M SAE O-RING X 1/4M JIC 90 EL	1
4	02269600	HYD FITTING 1/2M SAE O-RING X 1/2M NPT	2
5	02269692	HYD FITTING 1/4M SAE O-RING X 1/4M JIC	2
6	02288687	HYD FITTING 1/2M SAE O-RING X 1/2M JIC	2
7	02288740	HYD FITTING 3/4M SAE O-RING X 3/4M JIC	1
8	02289615	COUPLER,QD-MALE 1/2 IN NPT	1
9	02289617	CAP,QD NIPPLE (M)-1/2 IN BODY	1
10	02289626	CAP,QD COUPLER (F)-1/2 IN BODY	1
11	02289627	CAP,QD NIPPLE (M)-3/4 IN BODY	1
12	02289632	COUPLER,QD-FEMALE 1/2 IN NPT	1
13	02289715	COUPLER,QD-MALE 1 IN NPT	1
14	02289716	HYD FITTING 3/4M SAE O-RING X 1M NPT	1
15	02289717	VALVE,CARTRIDGE-HAND PUMP-ASSY	1
16	02289718	VALVE,CARTRIDGE-NEEDLE VALVE	1
17	02290036	VALVE,CARTRIDGE-RELIEF 750PSI	1
18	21032766	BLOCK,MANIFOLD - REEL STAND	1

Hydraulic Control Valve Assy

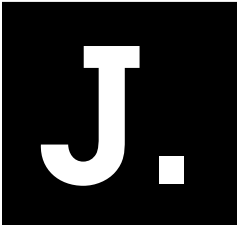


APPENDIX

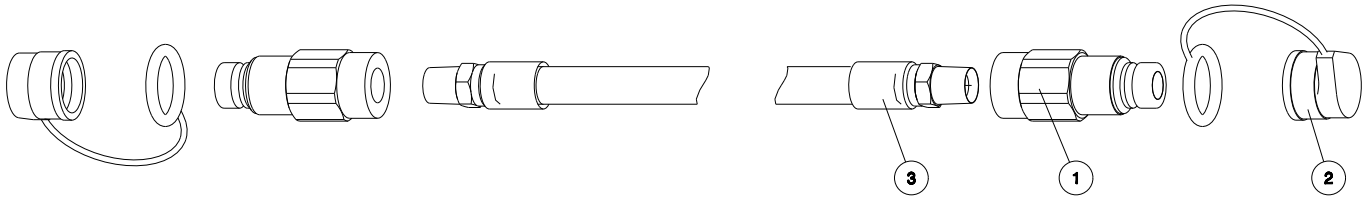


HYD CONTROL VALVE ASSY			
ITEM	PART NO.	DESCRIPTION	QTY
1	02093600	HYD FITTING 1/2M NPT X 1/2M JIC 90ELBOW	2
2	02198000	HYD FITTING 1/2M NPT HEX PLUG	1
3	02286437	HYD FITTING 1/2M NPT X 1/4F NPT REDUCER	1
4	02289608	HYD FITTING 1/2M NPT X 1/4M JIC 90ELBOW	1
5	02289609	HYD FITTING 1/2M NPT X 1/4M JIC	2
6	02289613	GAUGE,PRESS 0-1000 2.50 BTM MT	1
7	02289641	HYD FITTING 1/2M NPT X 1/2F NPT TEE	1
8	02289685	VALVE,HYD CONTROL 6WAY-2POS	1
9	02290111	VALVE,HYD CONTROL 2WAY	1
10	12003900	HYD FITTING 1/2M NPT X 1/2M NPT	1
12	21032472	BLOCK,LEVELWIND FINGER MNT	1
13	21032547	LABEL,INST-LEVELWIND URW24	2

Feed Hose (MFG) 08x50 ft

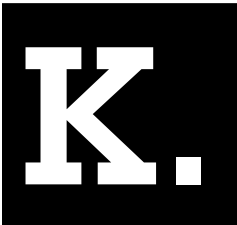


APPENDIX

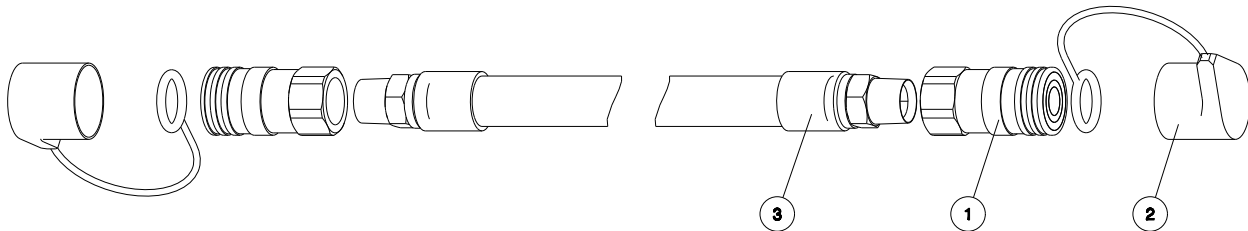


FEED HOSE ASSY			
ITEM	PART NO.	DESCRIPTION	QTY
1	02289615	COUPLER,QD-MALE 1/2 IN NPT	2
2	02289617	CAP,QD NIPPLE (M)-1/2 IN BODY	2
3	02289725	HOSE 08X600.0-08NPTM-08NPTM 3K	1

Return Hose (MFG) 16x50 ft

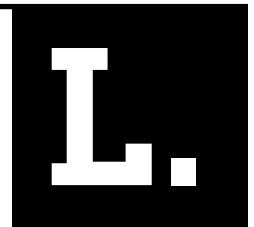


APPENDIX

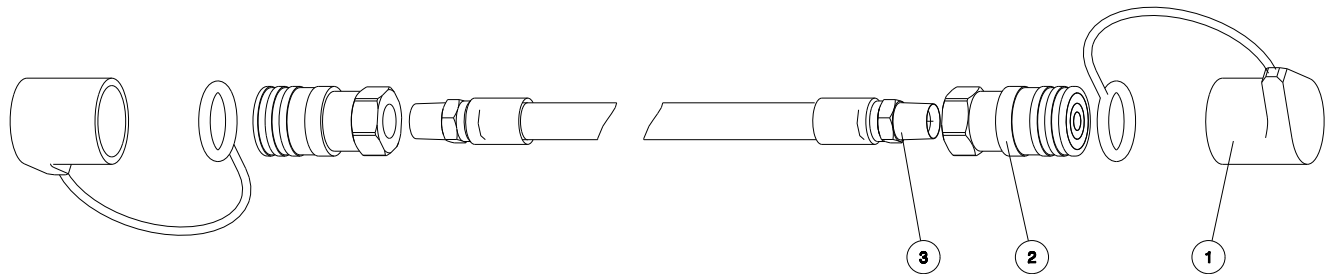


RETURN HOSE ASSY			
ITEM	PART NO	DESCRIPTION	QTY
1	02289616	COUPLER,QD-FEMALE 1 IN NPT	2
2	02289618	CAP,QD COUPLER (F)-3/4 IN BODY	2
3	02289727	HOSE 16X600.0-16NPTM-16NPTM 3K	1

Case Drain Hose (MFG) 08x50 ft



APPENDIX

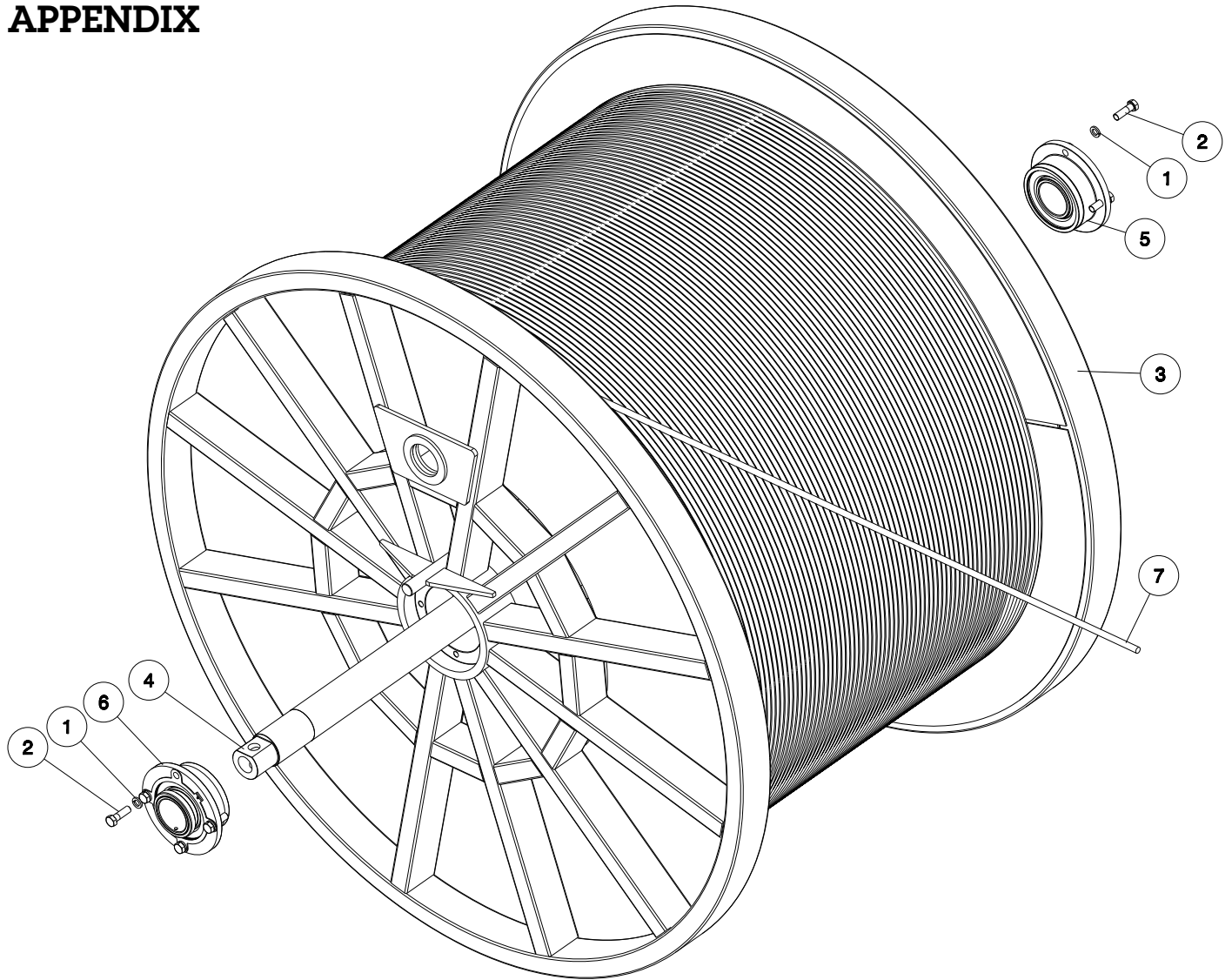


CASE DRAIN HOSE ASSY			
ITEM	PART NO	DESCRIPTION	QTY
1	02289626	CAP,QD COUPLER (F)-1/2 IN BODY	2
2	02289632	COUPLER,QD-FEMALE 1/2 IN NPT	2
3	02289725	HOSE 08X600.0-08NPTM-08NPTM 3K	1

RW23 Rope Kits

M.

APPENDIX



18mm ROPE/REEL KIT-21033840			
ITEM	PART NO	DESCRIPTION	QTY
1	02005601	LOCKWASHER 3/4 REG CZ	8
2	02289477	CAPSCREW 3/4-10 X 2.50 HEX GR5 YZ	8
3	21033803	ROPE REEL WELDMENT-RW23	1
4	21033815	REEL SHAFT-RW23	1
5	21033836	FLANGE MOUNT BEARING 4IN -MACHINED	1
6	21033837	FLANGE MOUNT BEARING 4IN W/LOC-MACHINED	1
7	21000101	18MM X 22000FT ANTI-TWIST ROPE	1

22mm ROPE/REEL KIT-21033845			
ITEM	PART NO	DESCRIPTION	QTY
1	02005601	LOCKWASHER 3/4 REG CZ	8
2	02289477	CAPSCREW 3/4-10 X 2.50 HEX GR5 YZ	8
3	21033803	ROPE REEL WELDMENT-RW23	1
4	21033815	REEL SHAFT-RW23	1
5	21033836	FLANGE MOUNT BEARING 4IN -MACHINED	1
6	21033837	FLANGE MOUNT BEARING 4IN W/LOC-MACHINED	1
7	21000156	22MM X 22000FT ANTI-TWIST ROPE	1

NO ROPE/REEL KIT-21033860			
ITEM	PART NO	DESCRIPTION	QTY
1	02005601	LOCKWASHER 3/4 REG CZ	8
2	02289477	CAPSCREW 3/4-10 X 2.50 HEX GR5 YZ	8
3	21033803	ROPE REEL WELDMENT-RW23	1
4	21033815	REEL SHAFT-RW23	1
5	21033836	FLANGE MOUNT BEARING 4IN -MACHINED	1
6	21033837	FLANGE MOUNT BEARING 4IN W/LOC-MACHINED	1
7	NA	NA	NA

Condux Tesmec, Inc.

P.O. Box 668 • 145 Kingswood Drive, Suite 1 • Mankato, MN 56002-0668

USA 1-888-980-1209 • FAX 1-507-387-3855

Internet: <http://www.ConduxTescmec.com>



© Copyright 2013, Condux Tesmec, Inc.

Printed in USA

Literature Part Number: 21033899

Revision Number: 1.1