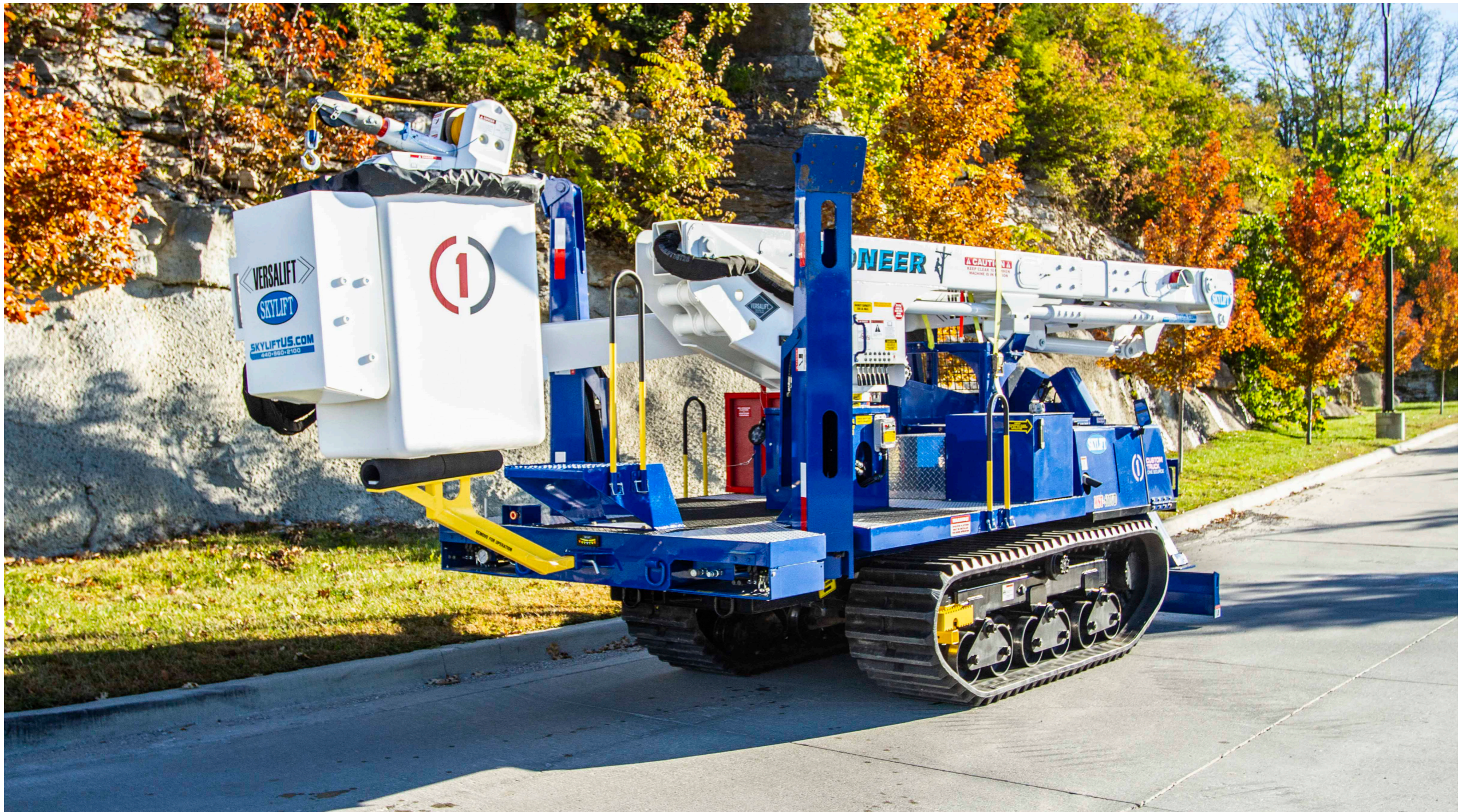




SKYLIFT PIONEER

MATERIAL HANDLER w/ TRI-AXLE TRAILER



*Custom Truck One Source reserves the right to change the specification of any unit at any time without prior notice. This brochure is only a statement of general specifications on the date of this publication.

ASK ABOUT THE CUSTOMIZED AND FLEXIBLE LEASING & FINANCING SOLUTIONS AVAILABLE FROM CUSTOM TRUCK CAPITAL

888-925-0858
www.customtruck.com



**CUSTOM
TRUCK**
ONE SOURCE™

SKYLIFT PIONEER

MATERIAL HANDLER w/ TRI-AXLE TRAILER

EQUIPMENT SPECS

CARRIER: MOROOKA USA MST600 VD
SPEED: 7.5 MPH
GROUND PRESSURE: 5.2 PSI
WEIGHT (MOROOKA USA CARRIER): 17,620 LBS.
LENGTH: 24'6"
HEIGHT: 9' 8" OVERALL
WIDTH: 77"
TRACKS: RUBBER
TILT ALARM: FRONT TO BACK / SIDE TO SIDE
ENGINE: 76 HP KUBOTA TURBO
FUEL CAPACITY: 10 GALLON
HYDRAULIC OIL CAPACITY: 25 GALLON*
PUMP: 15 GPM GEAR PUMP
OPERATING PSI: 3,000 PSI *
PAD MOUNT TRANSFORMER DECK: INTEGRATED / 3,000 LBS.*
OUTRIGGER SPREAD: FRONT 7'8" REAR 14'8"
OUTRIGGERS: A-FRAME FRONT / RADIAL REAR
OUTRIGGER SAFETY: OUTRIGGER INTERLOCK SYSTEM
OUTRIGGER ALARMS: AUDIBLE ALARMS ON OUTRIGGERS
GROUNDING LUG: STAINLESS LUG ON DECK
WORKING HEIGHT: 53'
SIDE REACH: 30'
ROTATION: CONTINUOUS
UPPER BOOM INSULATION GAP: 64"
LOWER BOOM INSULATION GAP: 12"
BASKET WORK ZONE: UNLIMITED
JIB WORK ZONE: REFER TO LOAD CHART
ISO CONTROL SINGLE STICK 3AXIS / 4AXIS
CONTROLS: FULL PRESSURE ON SIDE OF BOOM
PLATFORM: END-MOUNTED ROTATING 24" X 30" X 42" BUCKET
PLATFORM CAPACITY: 350 LBS.
JIB RATING 1,000 LBS
CATEGORY "C" RATING PER ANSI A92.2
LOWER CONTROLS ABOVE ROTATION
LOWER CONTROLS OVERRIDE UPPER CONTROLS



*Custom Truck One Source reserves the right to change the specification of any unit at any time without prior notice. This brochure is only a statement of general specifications on the date of this publication.

ASK ABOUT THE CUSTOMIZED AND FLEXIBLE LEASING & FINANCING SOLUTIONS AVAILABLE FROM CUSTOM TRUCK CAPITAL

888-925-0858
www.customtruck.com