

POLE STAND OPERATION AND SAFETY GUIDE

SLINGCO PART NO. TPE09682 & TPE13932

⚠ ATTENTION

READ and **UNDERSTAND** all of the instructions and safety information in this manual before operating or servicing this tool.

Failure to read and understand these warnings and safe handling instructions could result in severe personal injury or death.

KEEP THIS MANUAL WITH TOOL.

SAFETY INFORMATION

ATTENTION

DO NOT perform any service or maintenance on this tool other than described in this manual.

Read and follow the operator's manual before using this tool.

This manual should be kept available to all operating and maintenance personnel.

WARNING (TPE09682)



- Maximum load on level surface is 9,000 lb (4,082.33 kg). Not to be used on a slope of more than 20 degrees.
- Ensure that the inner leg is rotated to the stop position and the safety pin is installed before and during use.
- Always rotate the pole in an uphill direction.
- **READ MANUAL!**

WARNING (TPE13932)



- Maximum load on level surface is 12,500 lb (5,670 kg). Not to be used on a slope of more than 20 degrees.
- Ensure that the inner leg is rotated to the stop position and the safety pin is installed before and during use.
- Always rotate the pole in the uphill direction.
- **READ MANUAL!**

WARNING PINCH POINT HAZARD



- Keep hands away from mechanism, or serious injury may occur.

WARNING SAFETY SHOES REQUIRED



- Safety shoes required when using this product.

WARNING HARD HAT REQUIRED



- **DO NOT** operate without proper head protection.

WARNING SAFETY GOGGLES REQUIRED



- **DO NOT** operate without eye protection, or serious injury may occur.

WARNING GLOVES REQUIRED



- **DO NOT** operate without proper hand protection.

WARNING SUSPENDED LOAD



- Heavy suspended objects can fall, causing property damage, severe injury, or even death.
- Slingco Pole Stand does not support load of item being extracted.
- **DO NOT** lift or pull more than rated load.

SAFETY INFORMATION (CONT.)

WORK AREA SAFETY

1. Keep the area around the equipment clean and free of obstruction.
2. Bystanders should stay clear of the work area to ensure safety.

PERSONAL SAFETY

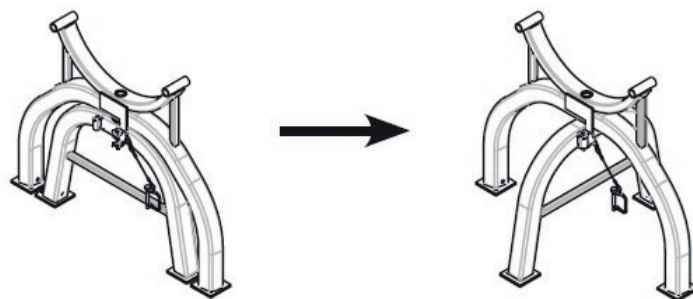
1. Stay alert while using the equipment to prevent serious injury. Do not use under the influence of drugs, alcohol or medications.
2. Do not wear loose hair or clothes that may get caught while the equipment is in operation.
3. Work safely. Maintain your balance and do not reach while operating equipment.

TOOL USE AND CARE

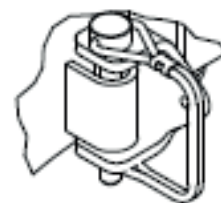
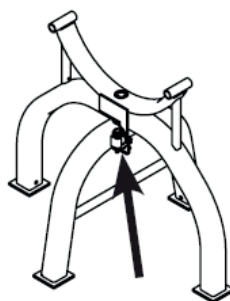
1. **DO NOT** use this tool if there are any abnormalities or damage to any of its components.
 2. Inspect the tool before and after every use. Do not use this tool if it is damaged in any way. Ensure that all pins are secure.
 3. When having the tool repaired, always use factory Slingco replacement parts.
-

OPERATING INSTRUCTIONS

1. Remove lock pin from closed locked position. Swivel the legs of the Slingco Pole Stand to the full, open position. Ensure the inner leg firmly contacts the stop.

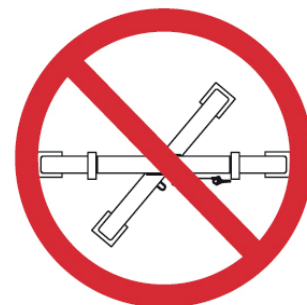
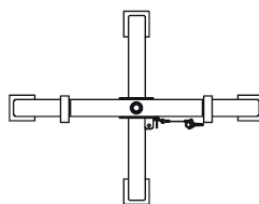


2. When in the proper position, insert the lock pin with the retaining clip placed over the end of the pin.



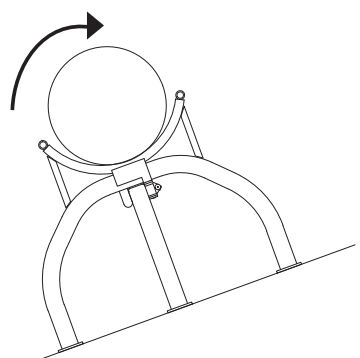
DETAIL OF PIN

3. DO NOT use the pole stand unless it is fully opened with the lock pin in place!



4. Set the Slingco Pole Stand on firm, flat ground/surface. DO NOT use Pole Stand at an angle greater than 20°.

***Always rotate the pole in the uphill direction.**

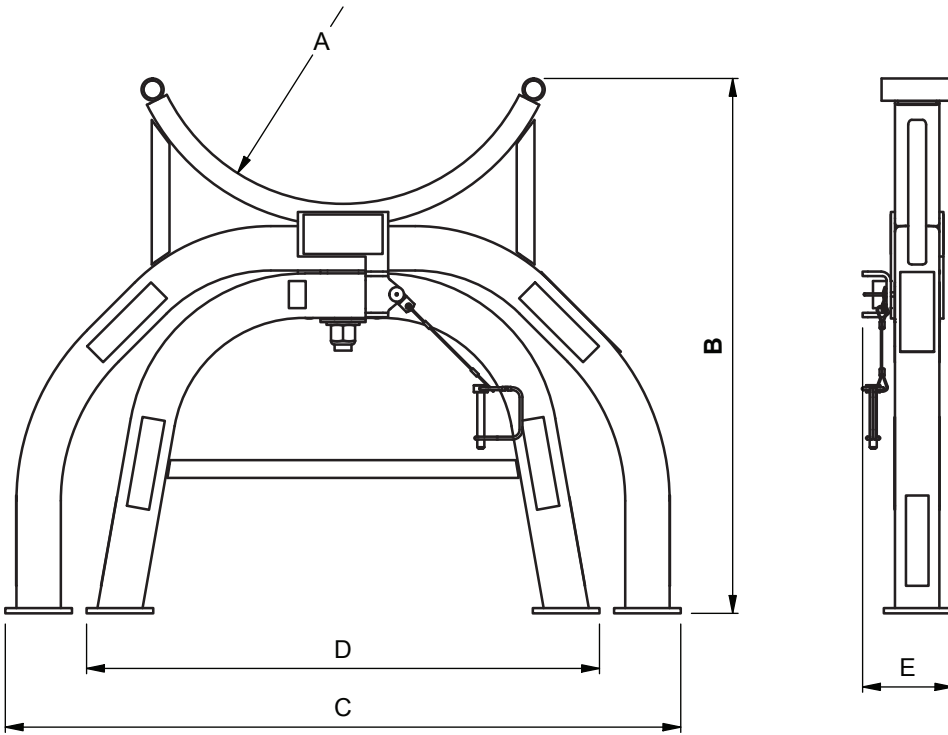


5. Then, gently place the pole onto the Pole Stand cradle.

6. After use, remove lock pin and swivel legs closed (see Step 1). Secure lock pin in closed position.

PARTS GUIDE

Part No.	Capacity		A		B		C		D		E		Weight	
	lb	kg	in	mm	in	mm	in	mm	in	mm	in	mm	lb	kg
TPE09682	9,000	4,082.3	8.72	221.5	23.69	601.7	29.92	760.0	22.72	577.1	4.0	102.0	31	14.0
TPE13932	12,500	5,669.9	11.61	294.9	23.18	588.8	30.59	777.0	22.39	568.7	4.19	106.4	33	15.0



⚠ ATTENTION

READ and **UNDERSTAND** all of the instructions and safety information in this manual before operating or servicing this tool.

Failure to read and understand these warnings and safe handling instructions could result in severe personal injury or death.

KEEP THIS MANUAL WITH TOOL.



Slingco America, Inc.
130 Celtic Blvd, Tyrone,
Georgia, 30290, USA
TOLL FREE: 888 685 9478
sales@slingcoamerica.com

888-685-9478

slingco.com

Slingco Limited
Gateway Business Park, New Hall Hey Road,
Rawtenstall, BB4 6JG, England
Tel: +44 [0]1706 855558
sales@slingco.com

+44 [0]1706 855558

Slingco Australia Pty. Ltd.
L11, 1 York Street, Sydney,
NSW 2000, Australia
Tel: +61 2 8313 5596
sales@slingcoaustralia.com.au

+61 3 8840 6556