



**Reference Number: C0128011 (CLOSE)**

**User:** Tracy Purdy <tracy.purdy@customtruck.com>

**Date/Time:** Mar. 24, 2025 6:42 CDT



**REPORT DETAILS & NOTATIONS SUMMARY**

**Checklist Items**

**Rental**

Customer Name	<b>OPTI LINK LLC</b>
Engine Hours	<b>1881 (Out) (In)</b>
Rental Equipment #	<b>C0128011</b>
VIN Scan	<b>5JX1C1226MD220621</b>
Chassis Make	<b>ATC</b>
Equipment Make	<b>7X12 SPLICE TRL</b>
Chassis/ Equip Model	<b>7X12 SPLICE TRL</b>
Date of Pre-Rental Inspection	<b>January 28, 2023</b>
Time of Pre-Rental Inspection	<b>9AM</b>
Pre-Rental Inspector	<b>TRACY PURDY</b>

DOT & Safety Out/ Pre-Rental

Operator Manuals / OSHA Guidebooks A/R	<b>Pass</b>
Lighting - Internal, External, Warning, Safety	<b>Pass</b>
Wheel Chocks	<b>Pass</b>
License Plates Present/Registration Exp. Date and Cab Card Present	<b>Pass</b>
DOT Exp Date - Confirm Forms in Cab	<b>Pass</b>
PM Status - Check for Stickers, Filters	<b>Pass</b>
DOT Exp Date Out/ Pre-Rental	<b>January 27, 2024</b>
Last PM Date Out/ Pre-Rental	<b>January 27, 2023</b>
Wheel Chocks - # Out/ Pre-Rental	<b>2</b>

Interior Out/ Pre-Rental

Engine/ Trans/ Radio/ Dash Controls	<b>Pass</b>
Gauge Cluster and Gauges	<b>Pass</b>
Fuel Gauge and Level	<b>Pass</b>
Audible Alarms (Air, Oil, Temp)	<b>Pass</b>
Fuel Out/ Pre-Rental	<b>Full</b>

Cab/ Chassis Condition Out/ Pre-Rental

Grill/ Hood/ Fenders/ Roof	<b>Pass</b>
Steps, Handles	<b>Pass</b>
Doors, Locks, Latches, Hinges	<b>Pass</b>

Aerial Device/ Digger/ Crane/Machine Out/ Pre-Rental

Platform/ Liner/ Cover Condition	<b>Pass</b>
Steel Condition	<b>Pass</b>

Tires, Wheels, Tracks Out/ Pre-Rental

Tires - Condition, General Inflation, Damage	Pass
Wheels - Condition, Damage	Pass
<u>Body Out/ Pre-Rental</u>	
Comp't Doors, Latches, Tail Shelf Condition	Pass
Pintle/ 5th Wheel/ Coupling Device	Pass
Trailer Electrical Plugs/ Safety Chain Attachment	Pass
Steps, Access Points, Grab Handles	Pass
<u>General Out/ Pre-Rental</u>	
Verify Record360 UCR, Video Upload	Pass
Ensure ALL keys go with Outbound Equipment	Pass
Attach or Remove Rental Tag as applicable	Pass
Date of Post-Rental Inspection	March 24, 2025
Time of Post-Rental Inspection	6AM
Post-Rental Inspector	TRACY PURDY
<u>DOT &amp; Safety In/ Post-Rental</u>	
Operator Manuals / OSHA Guidebooks A/R	Pass
Lighting - Internal, External, Warning, Safety	Fail
Fire extinguisher(s) present and charged	Fail
Wheel Chocks	Pass
License Plates Present/Registration Exp. Date and Cab Card Present	Pass
DOT Exp Date - Confirm Forms in Cab	Fail
Wheel Chocks - # In/ Post-Rental	2
DOT & Safety Comments In/ Post-Rental	NEEDS A DOT GENERATOR NEEDS A PM MISSING FIRE EXTINGUISHER REMOVE FIRST AID KIT AND DECALS
<u>Interior In/ Post-Rental</u>	
Engine/ Trans/ Radio/ Dash Controls	Fail
Gauge Cluster and Gauges	Fail
Fuel Gauge and Level	Fail
Interior Comments In/ Post-Rental	GENERATOR WON'T START AND CAN'T READ HOURS OR FUEL GAUGE
<u>Cab/ Chassis Condition In/ Post-Rental</u>	
Front Bumper	Pass
Grill/ Hood/ Fenders/ Roof	Fail
Steps, Handles	Pass
Doors, Locks, Latches, Hinges	Pass
Windshield/ Glass (Scratches, Chips, Cracks)	Pass
Cab/ Chassis Condition Comments In/ Post-Rental	GENERATOR COVER BEING HELD DOWN BY A STRAP
<u>Aerial Device/ Digger/ Crane/Machine In/ Post-Rental</u>	
Platform/ Liner/ Cover Condition	Pass
Steel Condition	Pass
All Covers - Condition	Fail
<u>Tires, Wheels, Tracks In/ Post-Rental</u>	
Tires - Condition, General Inflation, Damage	Fail
Wheels - Condition, Damage	Pass

Tires Comments In/ Post-Rental	<b>MISSING SPARE TIRE</b>
<u>Body In/ Post-Rental</u>	
Comp't Doors, Latches, Tail Shelf Condition	<b>Pass</b>
Pintle/ 5th Wheel/ Coupling Device	<b>Pass</b>
Trailer Electrical Plugs/ Safety Chain Attachment	<b>Pass</b>
Steps, Access Points, Grab Handles	<b>Pass</b>
<u>General In/ Post-Rental</u>	
Verify Record360 UCR, Video Upload	<b>Pass</b>
Confirm Zonar installation	<b>Fail</b>
Properly tag and secure keys for Inbound Equip	<b>Pass</b>
Additional Notes & Comments In/ Post-Rental	<b>NEEDS A ZTRAC INSTALLED</b>
	<b>REMOVE BRACKETS AND PLUG HOLES ON SIDE OF TRAILER</b>
	<b>REMOVE BRACKETS FROM COUNTER TOPS</b>
	<b>FENDERS ARE BENT</b>
	<b>REMOVE WHITE BOARD</b>
	<b>REMOVE BRACKETS ON WALLS THAT DON'T BELONG</b>



## Captured Images/Points of Interest

**OPEN - Jan. 28, 2023 8:57 CST**

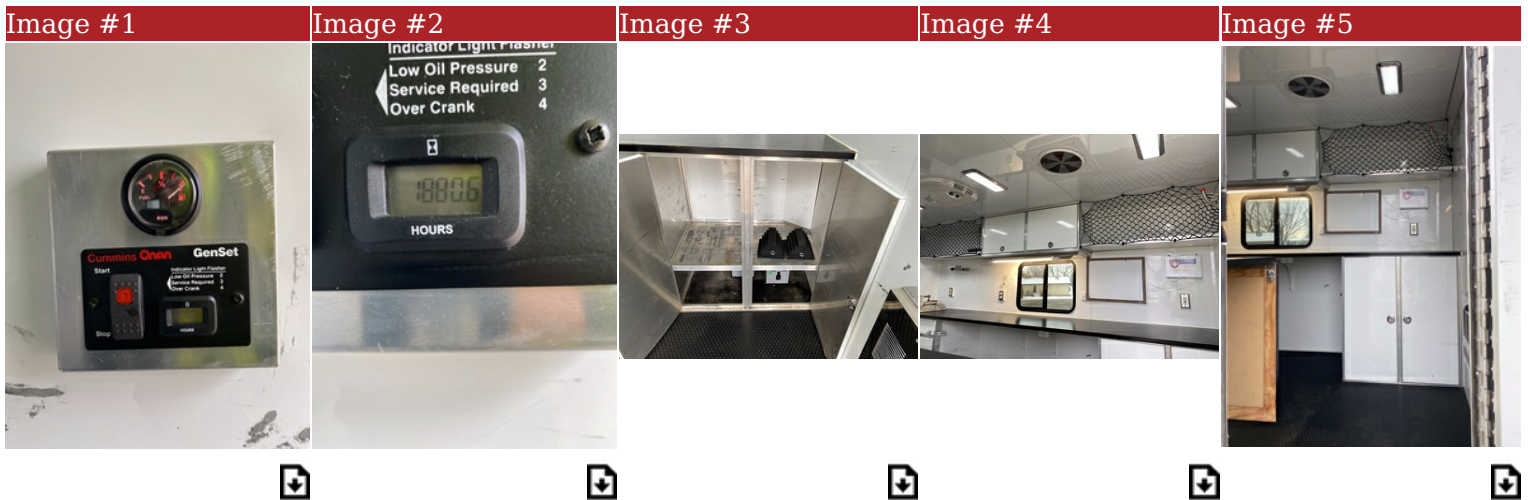


Image #6



Image #7



Image #8

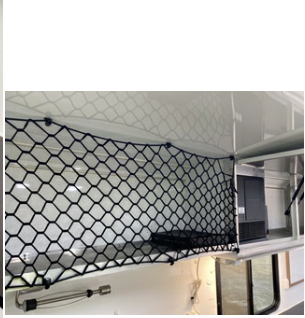


Image #9



Image #10



Image #11



Image #12



Image #13



Image #14



Image #15



Image #16



Image #17



Image #18



Image #19



Image #20



Image #21



Image #22



Image #23



Image #24



Image #25

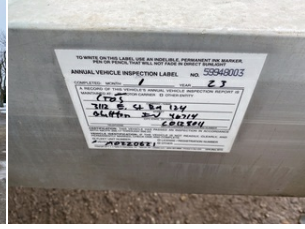


Image #26



Image #27



Image #28



Image #29



Image #30



Image #31



Image #32



Image #33



Image #34

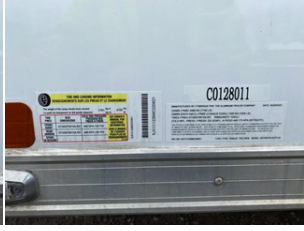


Image #35



Image #36



Image #37



Image #38



Image #39



CLOSE - Mar. 24, 2025 6:42 CDT

Image #40



Image #41



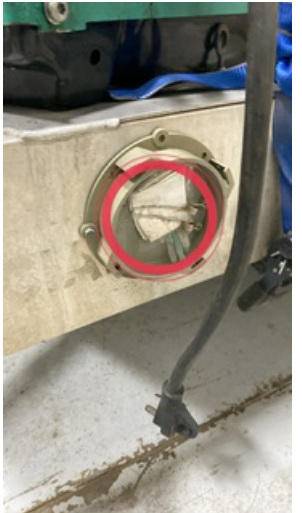
Image #42



Image #43



Image #44



Note: Missing, Other - Missing spare tire

Note: Crack

Note: Other - Cover being held down by a strap

Note: Broken, Missing, Other - Missing document holder cover

Image #45



Note: Hole, Other - Remove and plug holes

Image #46



Note: Hole, Other - Remove and plug holes

Image #47



Note: Bent, Dent

Image #48



Note: Bent, Dent

Image #49

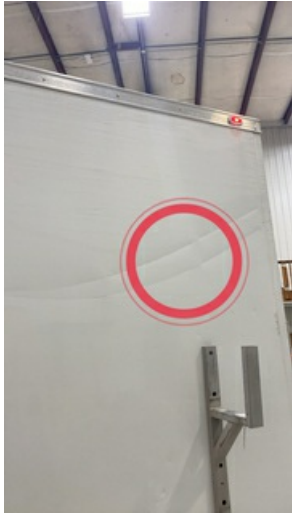


Note: Bent, Dent

Image #50



Image #51



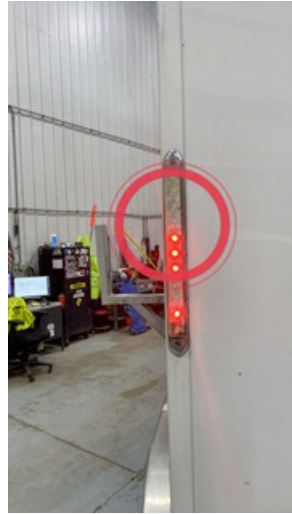
Note: Dent

Image #52



Note: Other - Remove first aid kit and decals we do not supply

Image #53



Note: Other - Lights out on the light

Image #54



Note: Bent, Dent

Image #55



Note: Bent, Dent, Crack

Image #56



Image #57



Note: Dent

Image #58



Note: Missing, Other - Missing fire extinguisher

Image #59



Image #60



Note: Other - Strobe light control just hanging by wires

Image #61



Note: Other - Remove bracket

Image #62



Note: Other - Remove first aid kit

Image #63

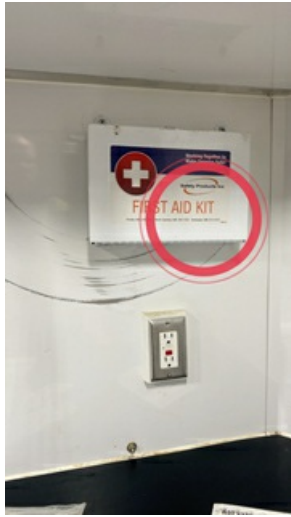
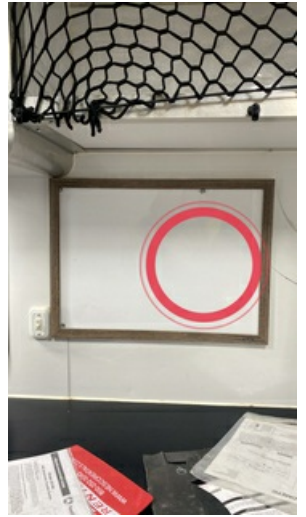


Image #64



Note: Other - Remove whiteboard

Image #65



Image #66

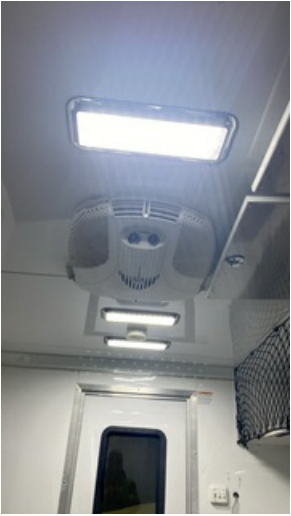


Image #67



Image #68



Image #69



Image #70



Image #71



Note: Other - No hours

Image #72



Note: Other - Fuel gauge not working

Image #73



Image #74



Image #75



Image #76



Image #77



Image #78



Image #79



Image #80



Image #81



Image #82



Image #83



Image #84



Note: Dent, Bent

Image #85



Image #86

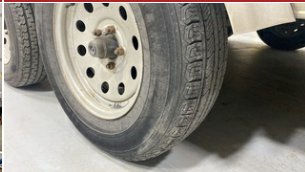


Image #87

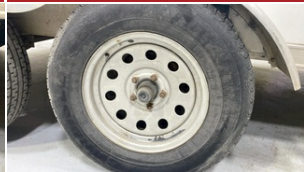


Image #88



Image #89



Image #90



Image #91



Image #92



Image #93



Image #94



Note: Other - Generator not starting

Note: Chip

Image #95



Image #96



**OPEN - Jan. 28, 2023 8:57 CST**

[Click to View Video 1](#)  Jan. 28, 2023 3:51 CST

**CLOSE - Mar. 24, 2025 6:42 CDT**

[Click to View Video 1](#)  Mar. 24, 2025 2:35 CDT

[Trouble viewing videos?](#)

## Signed Customer Acknowledgement

Customer hereby acknowledges and agrees that Owner has not and will not be providing any instruction, training, education, assistance or other direction in the use, operation, maintenance or care of the Equipment and Customer is solely responsible for such instruction, training, education, assistance or other direction.